



UK Office

Everest Biotech Ltd
Cherwell Innovation Centre
77 Heyford Park
Upper Heyford
Oxfordshire
OX25 5HD
UK

Enquiries:

info@everestbiotech.com

Sales:

sales@everestbiotech.com

Tech support:

support@everestbiotech.com

Tel: +44 (0)1869 238326

Fax: +44 (0)1869 238327

US Office

Everest Biotech c/o Abcore
405 Maple Street, Suite A106
Ramona,
CA 92065
USA

Inquiries:

info@everestbiotech.com

Sales:

usasales@everestbiotech.com

Tech support:

support@everestbiotech.com

Tel: 888-320-4628 (toll-free)

Fax: 888-841-9041

www.everestbiotech.com

**Research Use Only. Not for
diagnostic or therapeutic use.**

EB06667 - Goat Anti-MYD88 Antibody

Size: 100µg specific antibody in 200µl



Target Protein

Principal Names: MYD88 antibody, myeloid differentiation primary response gene (88) antibody, MYD88D antibody, myeloid differentiation primary response gene 88 antibody

Official Symbol: MYD88

Accession Number(s): NP_002459.1

Human GeneID(s): [4615](#)

Non-Human GeneID(s): 17874 (mouse), 301059 (rat)

Immunogen

Peptide with sequence C-IKYKAMKKEFP, from the internal region of the protein sequence according to NP_002459.1.

Please note the [peptide](#) is available for sale.

Purification and Storage

Purified from goat serum by ammonium sulphate precipitation followed by antigen affinity chromatography using the immunizing peptide.

Supplied at 0.5 mg/ml in Tris saline, 0.02% sodium azide, pH7.3 with 0.5% bovine serum albumin.

Aliquot and store at -20°C. Minimize freezing and thawing.

Applications Tested

Peptide ELISA: antibody detection limit dilution 1:16000.

Western blot: Approx 33kDa band observed in HumanThymus lysates (calculated MW of 33.2kDa according to NP_002459.1). Recommended concentration: 0.03-0.1µg/ml.

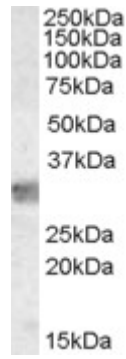
IHC: In paraffin embedded Human Tonsil shows staining of clusters of cells some of which are likely plasma cells. Recommended concentration, 4-6µg/ml.

Enzyme immunoassay: Sandwich-type ELISA with increasing amount of recombinant MYD88 captured by a rabbit antibody. Recommended reporter concentration: 5-10ug/ml

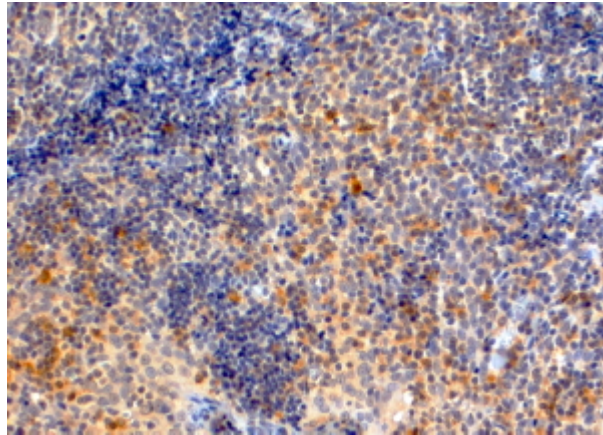
Species Reactivity

Tested: Human

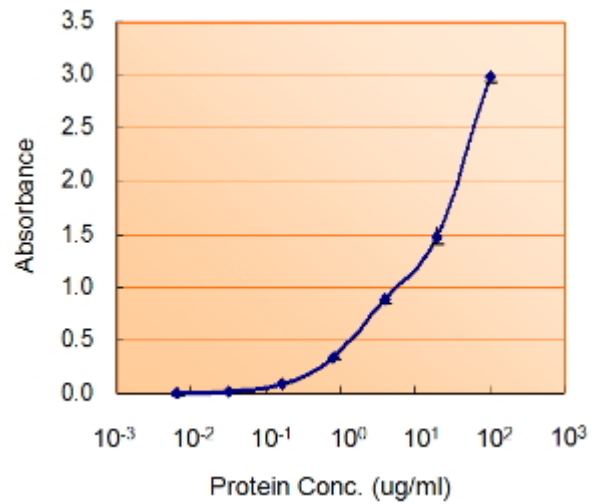
Expected from sequence similarity: Human, Mouse, Rat, Dog



EB06667 staining (0.03µg/ml) of human thymus lysate (RIPA buffer, 35µg total protein per lane). Primary incubated for 1 hour. Detected by western blot using chemiluminescence.



EB06667 (4µg/ml) staining of paraffin embedded Human Tonsil. Steamed antigen retrieval with Tris/EDTA buffer pH 9, HRP-staining. These results could not be obtained after antigen retrieval at pH6 with this batch of antibody.



EB06667 (5ug/ml) as the reporter with EB002006 as the capture rabbit antibody (5ug/ml).