



## UK Office

**Everest Biotech Ltd**  
Cherwell Innovation Centre  
77 Heyford Park  
Upper Heyford  
Oxfordshire  
OX25 5HD  
UK

Enquiries:

[info@everestbiotech.com](mailto:info@everestbiotech.com)

Sales:

[sales@everestbiotech.com](mailto:sales@everestbiotech.com)

Tech support:

[support@everestbiotech.com](mailto:support@everestbiotech.com)

Tel: +44 (0)1869 238326

Fax: +44 (0)1869 238327

## US Office

**Everest Biotech c/o Abcore**  
405 Maple Street, Suite A106  
Ramona,  
CA 92065  
USA

Inquiries:

[info@everestbiotech.com](mailto:info@everestbiotech.com)

Sales:

[usasales@everestbiotech.com](mailto:usasales@everestbiotech.com)

Tech support:

[support@everestbiotech.com](mailto:support@everestbiotech.com)

Tel: 888-320-4628 (toll-free)

Fax: 888-841-9041

[www.everestbiotech.com](http://www.everestbiotech.com)

**Research Use Only. Not for  
diagnostic or therapeutic use.**

## EB06069 - Goat Anti-FOXN1 Antibody

Size: 100µg specific antibody in 200µl



### Target Protein

**Principal Names:** FOXN1 antibody, WHN antibody, winged-helix nude antibody, FKHL20 antibody, forkhead box protein N1 antibody, forkhead box N1 antibody, RONU antibody, Rowett nude antibody, winged helix nude antibody, winged-helix nude antibody

**Official Symbol:** FOXN1

**Accession Number(s):** NP\_003584.2

**Human GeneID(s):** [8456](#)

### Immunogen

Peptide with sequence C-SVYLSPSSKPVALA, from the C Terminus of the protein sequence according to NP\_003584.2.

Please note the [peptide](#) is available for sale.

### Purification and Storage

Purified from goat serum by ammonium sulphate precipitation followed by antigen affinity chromatography using the immunizing peptide.

Supplied at 0.5 mg/ml in Tris saline, 0.02% sodium azide, pH7.3 with 0.5% bovine serum albumin.

Aliquot and store at -20°C. Minimize freezing and thawing.

### Applications Tested

**Peptide ELISA:** antibody detection limit dilution 1:32000.

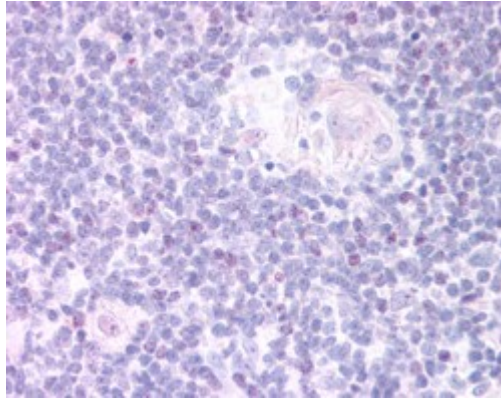
**Western blot:** Preliminary experiments in Human Thymus lysates gave no specific signal but low background (at antibody concentration up to 1µg/ml). We would appreciate any feedback from people in the field - have any results been reported with other antibodies/lysates?

**IHC:** In paraffin embedded Human Thymus Medulla shows speculate nuclear staining in some of the Medullar cells. Recommended concentration, 20-30µg/ml.

### Species Reactivity

**Tested:** Human

**Expected from sequence similarity:** Human



EB06069 (20µg/ml) staining of paraffin embedded Human Thymus Medulla. Steamed antigen retrieval with citrate buffer pH 6, AP-staining.