



## EB06032 - Goat Anti-FOXQ1 / FKHL1 Antibody

Size: 100µg specific antibody in 200µl



### UK Office

#### Everest Biotech Ltd

Cherwell Innovation Centre  
77 Heyford Park  
Upper Heyford  
Oxfordshire  
OX25 5HD  
UK

Enquiries:

[info@everestbiotech.com](mailto:info@everestbiotech.com)

Sales:

[sales@everestbiotech.com](mailto:sales@everestbiotech.com)

Tech support:

[support@everestbiotech.com](mailto:support@everestbiotech.com)

Tel: +44 (0)1869 238326

Fax: +44 (0)1869 238327

### US Office

#### Everest Biotech c/o Abcore

405 Maple Street, Suite A106  
Ramona,  
CA 92065  
USA

Inquiries:

[info@everestbiotech.com](mailto:info@everestbiotech.com)

Sales:

[usasales@everestbiotech.com](mailto:usasales@everestbiotech.com)

Tech support:

[support@everestbiotech.com](mailto:support@everestbiotech.com)

Tel: 888-320-4628 (toll-free)

Fax: 888-841-9041

[www.everestbiotech.com](http://www.everestbiotech.com)

**Research Use Only. Not for diagnostic or therapeutic use.**

### Target Protein

**Principal Names:** FOXQ1 antibody, HFH1 antibody, forkhead box Q1 antibody, winged helix/forkhead transcription factor antibody

**Official Symbol:** FOXQ1

**Accession Number(s):** NP\_150285.3

**Human GeneID(s):** [94234](#)

**Non-Human GeneID(s):** 15220 (mouse)

### Immunogen

Peptide with sequence KLEVFVPRAAHGD-C, from the N Terminus of the protein sequence according to NP\_150285.3.

Please note the [peptide](#) is available for sale.

### Purification and Storage

Purified from goat serum by ammonium sulphate precipitation followed by antigen affinity chromatography using the immunizing peptide.

Supplied at 0.5 mg/ml in Tris saline, 0.02% sodium azide, pH7.3 with 0.5% bovine serum albumin.

Aliquot and store at -20°C. Minimize freezing and thawing.

### Applications Tested

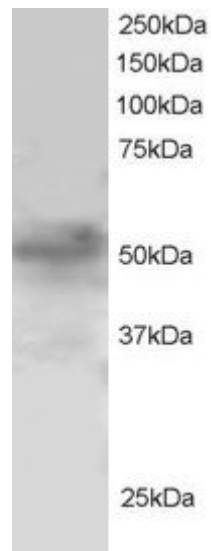
**Peptide ELISA:** antibody detection limit dilution 1:32000.

**Western blot:** Approx 50kDa band (faint) observed in H460 lysate (predicted MW of 46kDa according to NP\_150285). Recommended for use at 1-3µg/ml.

### Species Reactivity

**Tested:** Human

**Expected from sequence similarity:** Human, Mouse



EB06032 staining (1 $\mu$ g/ml) of H460 lysate (RIPA buffer, 30 $\mu$ g total protein per lane). Primary incubated for 1 hour. Detected by western blot using chemiluminescence.