



EB06011 - Goat Anti-FOXE1 / TTF2 Antibody

Size: 100µg specific antibody in 200µl



UK Office

Everest Biotech Ltd

Cherwell Innovation Centre
77 Heyford Park
Upper Heyford
Oxfordshire
OX25 5HD
UK

Enquiries:

info@everestbiotech.com

Sales:

sales@everestbiotech.com

Tech support:

support@everestbiotech.com

Tel: +44 (0)1869 238326

Fax: +44 (0)1869 238327

US Office

Everest Biotech c/o Abcore

405 Maple Street, Suite A106
Ramona,
CA 92065
USA

Inquiries:

info@everestbiotech.com

Sales:

usasales@everestbiotech.com

Tech support:

support@everestbiotech.com

Tel: 888-320-4628 (toll-free)

Fax: 888-841-9041

www.everestbiotech.com

Research Use Only. Not for diagnostic or therapeutic use.

Target Protein

Principal Names: FOXE1 antibody, TTF2 antibody, forkhead box E1 (thyroid transcription factor 2) antibody, FOXE2 antibody, HFKH4 antibody, HFKL5 antibody, TITF2 antibody, TTF-2 antibody, FKHL15 antibody, forkhead (Drosophila)-like 15 antibody, forkhead box E1 antibody, forkhead box E2 antibody, thyroid transcription factor-2 antibody, Forkhead, drosophila, homolog-like 15 antibody

Official Symbol: FOXE1

Accession Number(s): NP_004464.2

Human GeneID(s): [2304](#)

Immunogen

Peptide with sequence C-AYPGGIDRFVSAM, from the C Terminus of the protein sequence according to NP_004464.2.

Please note the [peptide](#) is available for sale.

Purification and Storage

Purified from goat serum by ammonium sulphate precipitation followed by antigen affinity chromatography using the immunizing peptide.

Supplied at 0.5 mg/ml in Tris saline, 0.02% sodium azide, pH7.3 with 0.5% bovine serum albumin.

Aliquot and store at -20°C. Minimize freezing and thawing.

Applications Tested

Peptide ELISA: antibody detection limit dilution 1:32000.

Western blot: Preliminary experiments gave an approx 70kDa band in Human Thymus and Thyroid Gland lysates after 0.3µg/ml antibody staining. Please note that currently we cannot find an explanation in the literature for the band we observe given the calculated size of 38.1kDa according to NP_004464.2. The 65kDa band was successfully blocked by incubation with the immunizing peptide. We would appreciate any feedback from people in the field - have any results been reported with other antibodies/lysates? Have any further splice variants/modified forms been reported?

IHC: In paraffin embedded Human Testis shows strong nuclear staining in developing sperm cells. Recommended concentration, 2-3µg/ml. This product has also been successfully used in Human Thyroid Gland.

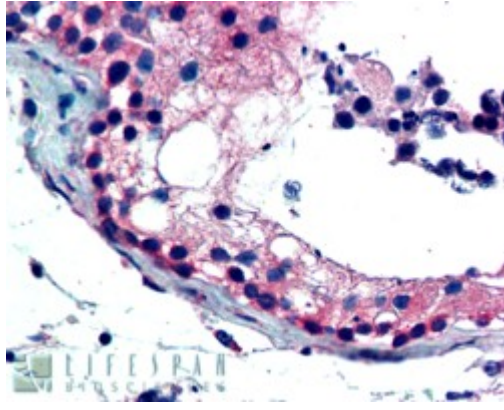
Species Reactivity

Tested: Human

Expected from sequence similarity: Human

Specific Reference

PMID: 0



EB06011 (2.5µg/ml) staining of paraffin embedded Human Testis. Steamed antigen retrieval with citrate buffer pH 6, AP-staining.