



UK Office

Everest Biotech Ltd

Cherwell Innovation Centre
77 Heyford Park
Upper Heyford
Oxfordshire
OX25 5HD
UK

Enquiries:

info@everestbiotech.com

Sales:

sales@everestbiotech.com

Tech support:

support@everestbiotech.com

Tel: +44 (0)1869 238326

Fax: +44 (0)1869 238327

US Office

Everest Biotech c/o Abcore

405 Maple Street, Suite A106
Ramona,
CA 92065
USA

Inquiries:

info@everestbiotech.com

Sales:

usasales@everestbiotech.com

Tech support:

support@everestbiotech.com

Tel: 888-320-4628 (toll-free)

Fax: 888-841-9041

www.everestbiotech.com

**Research Use Only. Not for
diagnostic or therapeutic use.**

EB05515 - Goat Anti-CBR1 Antibody

Size: 100µg specific antibody in 200µl



Target Protein

Principal Names: CBR1 antibody, carbonyl reductase 1 antibody, CBR antibody, carbonyl reductase (NADPH) antibody, carbonyl reductase (NADPH) 1 antibody, hCBR1 antibody, prostaglandin 9-ketoreductase antibody, prostaglandin-E(2) 9-reductase antibody, SDR21C1 antibody, short chain dehydrogenase/reductase family 21C, member 1 antibody

Official Symbol: CBR1

Accession Number(s): NP_001748.1

Human GeneID(s): [873](#)

Immunogen

Peptide with sequence C-HGQFVSEKRVEQW, from the C Terminus of the protein sequence according to NP_001748.1.

Please note the [peptide](#) is available for sale.

Purification and Storage

Purified from goat serum by ammonium sulphate precipitation followed by antigen affinity chromatography using the immunizing peptide.

Supplied at 0.5 mg/ml in Tris saline, 0.02% sodium azide, pH7.3 with 0.5% bovine serum albumin.

Aliquot and store at -20°C. Minimize freezing and thawing.

Applications Tested

Peptide ELISA: antibody detection limit dilution 1:16000.

Western blot: Approx 30-35kDa band seen in Human Liver and Kidney lysates [Calculated MW of 30.4kDa according to NP_001748.1]. Recommended for use at 0.2-0.5µg/ml. An anonymous customer found positive results in WB on Human lung cancer cells (A549).

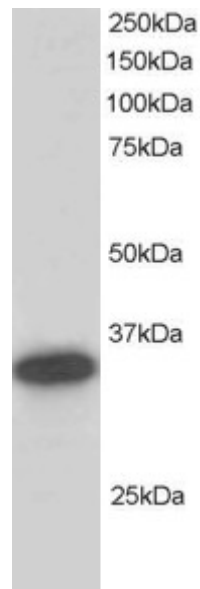
IHC: In paraffin embedded Human Kidney shows cytoplasmic staining of epithelial cells of renal tubules. Recommended concentration, 1-2µg/ml.

Skip the secondary! This product is also on offer conjugated to HRP [here](#).

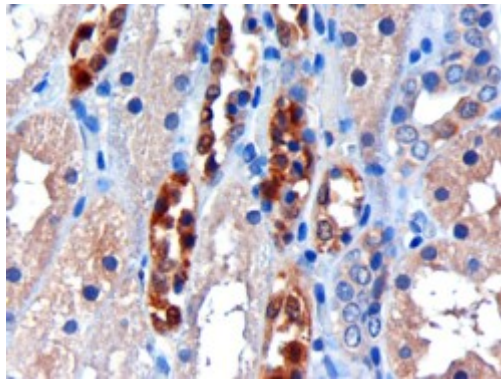
Species Reactivity

Tested: Human

Expected from sequence similarity: Human



EB05515 staining (0.2 μ g/ml) of Human Liver lysate (RIPA buffer, 30 μ g total protein per lane). Primary incubated for 1 hour. Detected by western blot using chemiluminescence.



EB05515 (3 μ g/ml) staining of paraffin embedded Human Kidney. Microwaved antigen retrieval with citrate buffer pH 6, HRP-staining.