

UK Office

Everest Biotech Ltd

Cherwell Innovation Centre
77 Heyford Park
Upper Heyford
Oxfordshire
OX25 5HD
UK

Enquiries:

info@everestbiotech.com

Sales:

sales@everestbiotech.com

Tech support:

support@everestbiotech.com

Tel: +44 (0)1869 238326

Fax: +44 (0)1869 238327

US Office

Everest Biotech c/o Abcore

405 Maple Street, Suite A106
Ramona,
CA 92065
USA

Inquiries:

info@everestbiotech.com

Sales:

usasales@everestbiotech.com

Tech support:

support@everestbiotech.com

Tel: 888-320-4628 (toll-free)

Fax: 888-841-9041

www.everestbiotech.com

**Research Use Only. Not for
diagnostic or therapeutic use.**

Target Protein

Principal Names: ADAM17 antibody, TACE antibody, a disintegrin and metalloproteinase domain 17 (tumor necrosis factor, alpha, converting enzyme) antibody, CSVP antibody, cSVP antibody, CD156b antibody, CD156b antibody, MGC71942 antibody, TACE antibody, cSVPADAM metalloproteinase domain 17 antibody, TNF-alpha converting enzyme antibody, a disintegrin and metalloproteinase domain 17 antibody, a disintegrin and metalloproteinase domain 17 (tumor necrosis factor, alpha, converting enzyme) antibody, snake venom-like protease antibody, ADAM metalloproteinase domain 17 antibody, ADAM18 antibody, CD156B antibody, ADAM metalloproteinase domain 18 antibody, snake venom-like protease antibody, tumor necrosis factor, alpha, converting enzyme antibody

Official Symbol: ADAM17

Accession Number(s): NP_003174.3

Human GeneID(s): [6868](#)

Non-Human GeneID(s): 11491 (mouse)

Important Comments: This antibody is expected to recognise isoform 1 (represented by NP_003174) and not isoform 2 (represented by NP_068604).

Immunogen

Peptide with sequence LQRQNRVDSKETEC, from the C Terminus of the protein sequence according to NP_003174.3.

Please note the [peptide](#) is available for sale.

Purification and Storage

Purified from goat serum by ammonium sulphate precipitation followed by antigen affinity chromatography using the immunizing peptide.

Supplied at 0.5 mg/ml in Tris saline, 0.02% sodium azide, pH7.3 with 0.5% bovine serum albumin.

Aliquot and store at -20°C. Minimize freezing and thawing.

Applications Tested

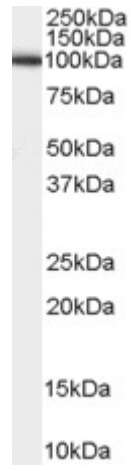
Peptide ELISA: antibody detection limit dilution 1:128000.

Western blot: Approx 100kDa band observed in human testis lysates (calculated MW of 93.0kDa according to NP_003174.3). Recommended concentration: 0.1-0.3µg/ml.

Species Reactivity

Tested: Human

Expected from sequence similarity: Human, Mouse, Rat



EB05382 staining (0.2 μ g/ml) of Human Testis lysate (RIPA buffer, 35 μ g total protein per lane). Primary incubated for 1 hour. Detected by western blot using chemiluminescence.