

UK Office

Everest Biotech Ltd

Cherwell Innovation Centre
77 Heyford Park
Upper Heyford
Oxfordshire
OX25 5HD
UK

Enquiries:

info@everestbiotech.com

Sales:

sales@everestbiotech.com

Tech support:

support@everestbiotech.com

Tel: +44 (0)1869 238326

Fax: +44 (0)1869 238327

US Office

Everest Biotech c/o Abcore

405 Maple Street, Suite A106
Ramona,
CA 92065
USA

Inquiries:

info@everestbiotech.com

Sales:

usasales@everestbiotech.com

Tech support:

support@everestbiotech.com

Tel: 888-320-4628 (toll-free)

Fax: 888-841-9041

www.everestbiotech.com

**Research Use Only. Not for
diagnostic or therapeutic use.**

EB05370 - Goat Anti-NQO1 Antibody

Size: 100µg specific antibody in 200µl



Target Protein

Principal Names: NQO1 antibody, NAD(P)H dehydrogenase, quinone 1 antibody, DTD antibody, QR1 antibody, DHQU antibody, DIA4 antibody, NMOR1 antibody, NMORI antibody, diaphorase-4 antibody, diaphorase (NADH/NADPH) antibody, diaphorase (NADH/NADPH) (cytochrome b-5 reductase) antibody, NAD(P)H:menadione oxidoreductase 1, dioxin-inducible 1 antibody, DT-diaphorase antibody, NAD(P)H menadione oxidoreductase 1, dioxin-inducible antibody, NAD(P)H:Quinone acceptor oxidoreductase type 1 antibody, NAD(P)H menadione oxidoreductase 1, dioxin-inducible antibody, NAD(P)H:quinone oxidoreductase antibody, azoreductase antibody, diaphorase (NADH/NADPH) (cytochrome b-5 reductase) antibody, dioxin-inducible 1 antibody, menadione reductase antibody, phyloquinone reductase antibody, quinone reductase 1 antibody

Official Symbol: NQO1

Accession Number(s): NP_000894.1; NP_001020604.1; NP_001020605.1

Human GeneID(s): [1728](#)

Non-Human GeneID(s): 18104 (mouse)

Important Comments: This products is expected to recognize all three reported isoforms (NP_000894.1, NP_001020604.1 and NP_001020605.1).

Immunogen

Peptide with sequence C-SIPTDNQIKARK, from the C Terminus of the protein sequence according to NP_000894.1; NP_001020604.1; NP_001020605.1.

Please note the [peptide](#) is available for sale.

Purification and Storage

Purified from goat serum by ammonium sulphate precipitation followed by antigen affinity chromatography using the immunizing peptide.

Supplied at 0.5 mg/ml in Tris saline, 0.02% sodium azide, pH7.3 with 0.5% bovine serum albumin.

Aliquot and store at -20°C. Minimize freezing and thawing.

Applications Tested

Peptide ELISA: antibody detection limit dilution 1:64000.

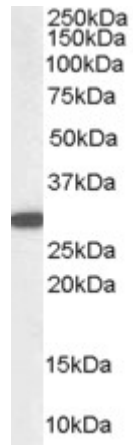
Western blot: Approx. 30kDa band observed in Human Kidney and Lung lysates (calculated MW of 30.9kDa according to NP_000894.1). Recommended concentration: 0.03-0.1µg/ml.

Skip the secondary! This product is also on offer conjugated to HRP [here](#).

Species Reactivity

Tested: Human, Mouse, Dog

Expected from sequence similarity: Human, Mouse, Rat, Dog, Pig



EB05370 staining (0.03 μ g/ml) of Human Kidney lysate (RIPA buffer, 35 μ g total protein per lane). Primary incubated for 1 hour. Detected by western blot using chemiluminescence.