



UK Office

Everest Biotech Ltd

Cherwell Innovation Centre
77 Heyford Park
Upper Heyford
Oxfordshire
OX25 5HD
UK

Enquiries:

info@everestbiotech.com

Sales:

sales@everestbiotech.com

Tech support:

support@everestbiotech.com

Tel: +44 (0)1869 238326

Fax: +44 (0)1869 238327

US Office

Everest Biotech c/o Abcore

405 Maple Street, Suite A106
Ramona,
CA 92065
USA

Inquiries:

info@everestbiotech.com

Sales:

usasales@everestbiotech.com

Tech support:

support@everestbiotech.com

Tel: 888-320-4628 (toll-free)

Fax: 888-841-9041

www.everestbiotech.com

**Research Use Only. Not for
diagnostic or therapeutic use.**

EB05198 - Goat Anti-ATF2 Antibody

Size: 100µg specific antibody in 200µl



Target Protein

Principal Names: ATF2 antibody, activating transcription factor 2 antibody, HB16 antibody, CREB2 antibody, TREB7 antibody, CRE-BP1 antibody, cAMP responsive element binding protein 2 antibody, MGC111558 antibody, activating transcription factor 2 splice variant ATF2-var2 antibody, cAMP responsive element binding protein 2, formerly antibody

Official Symbol: ATF2

Accession Number(s): NP_001871.2

Human GeneID(s): [1386](#)

Non-Human GeneID(s): 81647 (rat)

Immunogen

Peptide with sequence C-IVMAPSSQSQPSGS, from the C Terminus of the protein sequence according to NP_001871.2.

Please note the [peptide](#) is available for sale.

Purification and Storage

Purified from goat serum by ammonium sulphate precipitation followed by antigen affinity chromatography using the immunizing peptide.

Supplied at 0.5 mg/ml in Tris saline, 0.02% sodium azide, pH7.3 with 0.5% bovine serum albumin.

Aliquot and store at -20°C. Minimize freezing and thawing.

Applications Tested

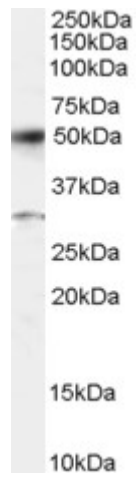
Peptide ELISA: antibody detection limit dilution 1:32000.

Western blot: Experiments gave bands at approx 55kDa and 30kDa in lysates of Human Placenta and of cell line HeLa after 0.5µg/ml antibody staining. These bands correspond to earlier findings in literature with different antibodies (Bailey et al, J Clin Endocrinol Metab. 2002 Apr;87(4):1717-28.; PMID: 11932306). This protein has a calculated MW of 54.5kDa according to NP_001871.2. Recommended concentration: 0.5-1.5µg/ml.

Species Reactivity

Tested: Human

Expected from sequence similarity: Human, Rat, Dog, Cow



EB05198 staining (0.5 μ g/ml) of Human Placenta lysate (RIPA buffer, 35 μ g total protein per lane). Primary incubated for 12 hour. Detected by western blot using chemiluminescence.