



UK Office

Everest Biotech Ltd

Cherwell Innovation Centre
77 Heyford Park
Upper Heyford
Oxfordshire
OX25 5HD
UK

Enquiries:

info@everestbiotech.com

Sales:

sales@everestbiotech.com

Tech support:

support@everestbiotech.com

Tel: +44 (0)1869 238326

Fax: +44 (0)1869 238327

US Office

Everest Biotech c/o Abcore

405 Maple Street, Suite A106
Ramona,
CA 92065
USA

Inquiries:

info@everestbiotech.com

Sales:

usasales@everestbiotech.com

Tech support:

support@everestbiotech.com

Tel: 888-320-4628 (toll-free)

Fax: 888-841-9041

www.everestbiotech.com

**Research Use Only. Not for
diagnostic or therapeutic use.**

EB05058 - Goat Anti-MAX Antibody

Size: 100µg specific antibody in 200µl



Target Protein

Principal Names: MAX antibody, MAX protein antibody, MGC10775 antibody, MGC11225 antibody, MGC18164 antibody, MGC34679 antibody, MGC36767 antibody, myc-associated factor X antibody, helix-loop-helix zipper protein antibody, MYC associated factor X antibody, bHLHd4 antibody, bHLHd5 antibody, bHLHd6 antibody, bHLHd7 antibody, bHLHd8 antibody, orf1 antibody

Official Symbol: MAX

Accession Number(s): NP_002373.3; NP_660087.1

Human GeneID(s): [4149](#)

Non-Human GeneID(s): 17187 (mouse)

Important Comments: This antibody is expected to recognize both reported isoforms (NP_002373.3; NP_660087.1).

Immunogen

Peptide with sequence C-EEPQSRKKLRMEAS, from the C Terminus of the protein sequence according to NP_002373.3; NP_660087.1.

Please note the [peptide](#) is available for sale.

Purification and Storage

Purified from goat serum by ammonium sulphate precipitation followed by antigen affinity chromatography using the immunizing peptide.

Supplied at 0.5 mg/ml in Tris saline, 0.02% sodium azide, pH7.3 with 0.5% bovine serum albumin.

Aliquot and store at -20°C. Minimize freezing and thawing.

Applications Tested

Peptide ELISA: antibody detection limit dilution 1:32000.

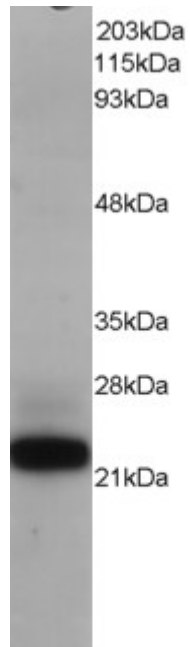
Western blot: Approx 22kDa band observed in lysates of cell line Jurkat and of Mouse and Rat Spleen lysates (calculated MW of 18.3kDa according to NP_002373.3).

Recommended for use at 0.1-0.3µg/ml.

Species Reactivity

Tested: Human, Mouse, Rat

Expected from sequence similarity: Human, Mouse, Rat, Dog, Cow



EB05058 staining (0.1µg/ml) of Jurkat lysate (RIPA buffer, 1.4E+05 cells per lane). Primary incubated for 12 hour. Detected by western blot using chemiluminescence.