

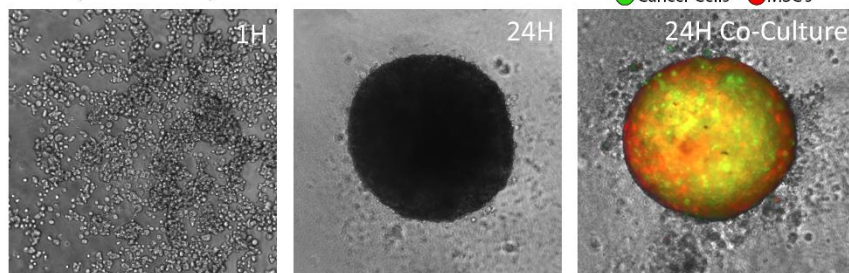
The Canvas™ Extracellular Matrix

ORDERING INFORMATION

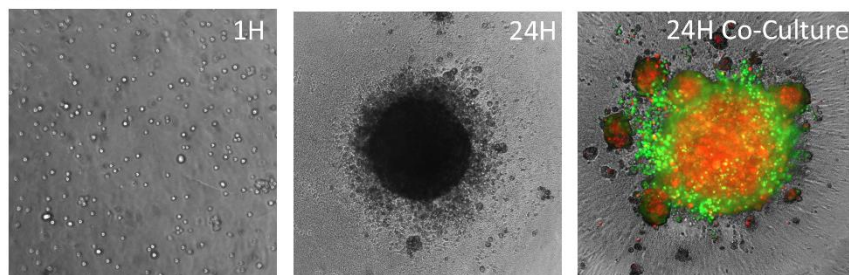
<i>PRODUCT NAME</i>	<i>CATALOG NUMBER</i>	<i>COMPONENTS</i>	<i>PART NUMBER</i>	<i>SIZE</i>
Canvas™ Extracellular Matrix	EM-0001	Canvas ECM	EM-0001-A1	10 mL
		Crosslinker Component	EM-0001-P1	Powder
		Buffer Solution	EM-0001-M1	1.5 mL

EXTRACELLULAR MATRIX CHARACTERIZATION

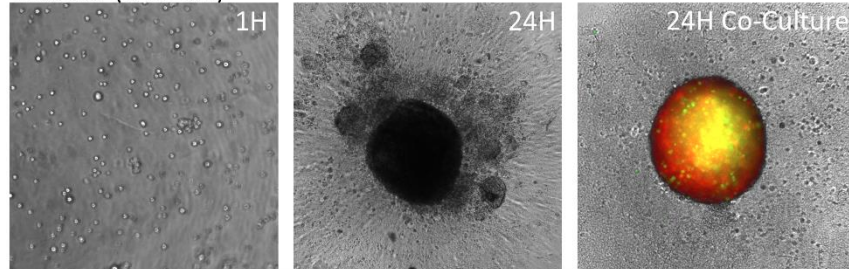
Stew (Pancreatic)



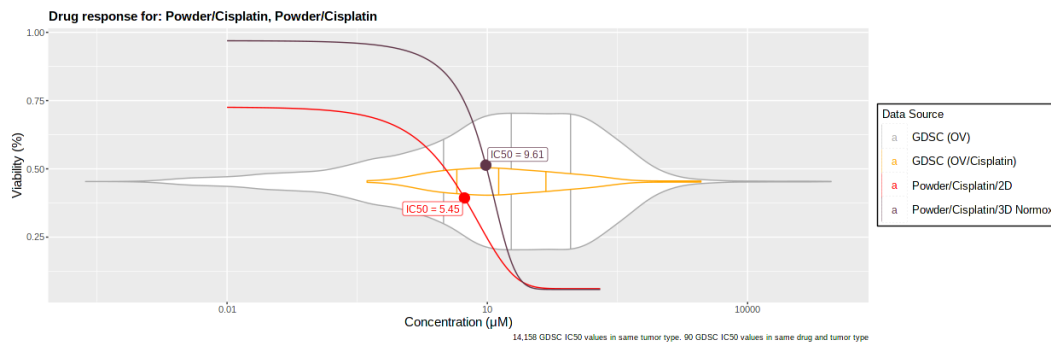
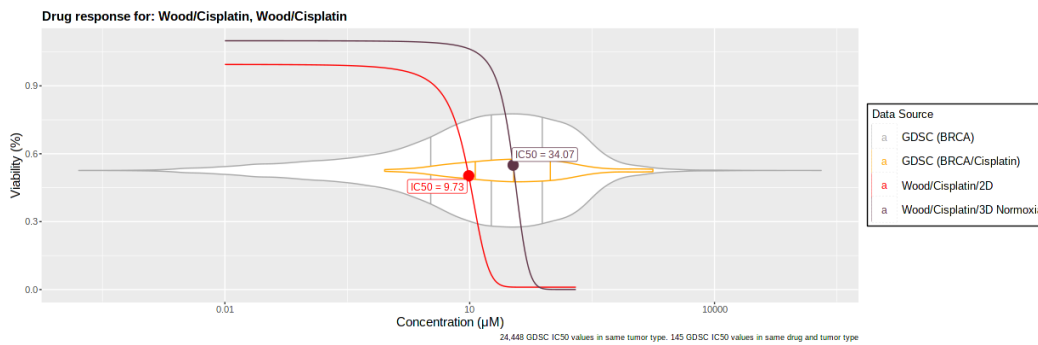
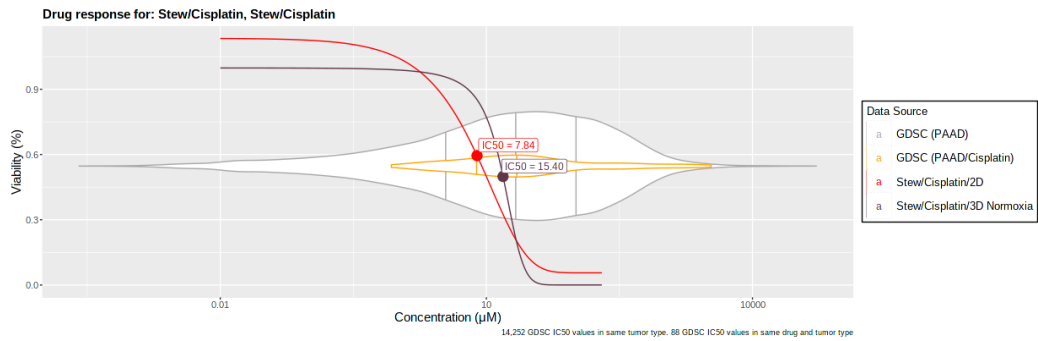
Wood (Breast)



Powder (Ovarian)



3D DRUG RESPONSES WITH CANVAS™ EXTRACELLULAR MATRIX



CANVAS™ EXTRACELLULAR MATRIX PROTOCOL



STORAGE AND SAFETY

Storage and Stability: The Canvas™ extracellular matrix is stored at 2-8 degrees Celsius for shelf life of up to 6 months. The crosslinker component must be stored at -20 degrees Celsius upon receipt of product.

Additional Characteristics of the Canvas™ Extracellular Matrix:

Format	10mL
Collagen	Marine-sourced Collagen Type 0
Serum Level	Serum free
Storage: Collagen Solution & Buffer	Store at 2-8 Degrees C
Storage: Crosslinker	Freeze on arrival (-20C)
Shelf Life	6 Months
Turbidity	Clear to Opaque
Bioburden	<5 CFU/mL
pH	2.5-4.0
Clarity	Translucent
pH	7.3 - 7.6

Notes:

1. For 3D cell culture experiments, Greiner Bio-One™ and Corning™ Ultra-Low-Attachment (ULA) plates were utilized.

Cell Culture Media Utilized in This Document:



Renaissance Essential Tumor Medium

Cell Lines Utilized in This Document:



Basket Pancreatic Cell
Model



Chocolate Pancreatic Cell
Model



Stew Pancreatic Cell
Model



Powder Ovarian Cell
Model



Wood Breast Cell
Model