

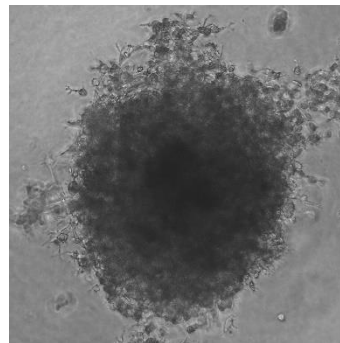
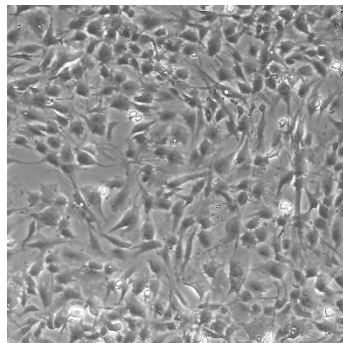
The Basket cell model originates from an adenocarcinoma of the pancreatic head



<i>PRODUCT NAME</i>	<i>CATALOG NUMBER</i>	<i>SIZE</i>
Basket Pancreatic Cell Model	CB-0503	1 Million Cells per Cryovial



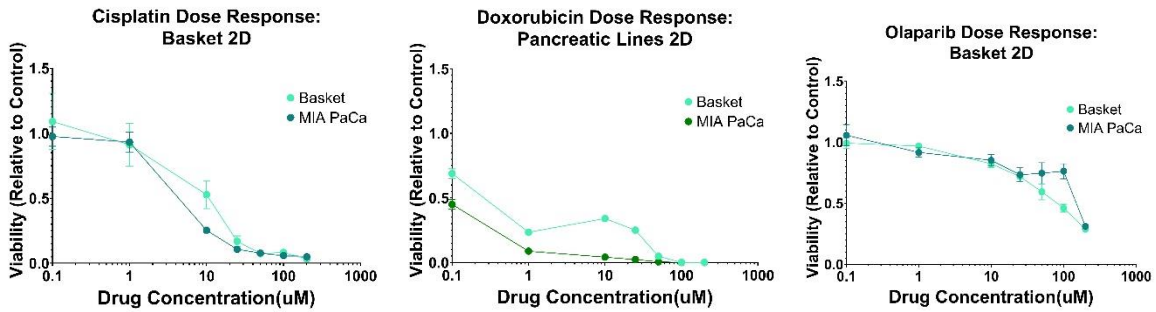
CELL LINE CHARACTERIZATION



MORPHOLOGY (2D vs. 3D¹)

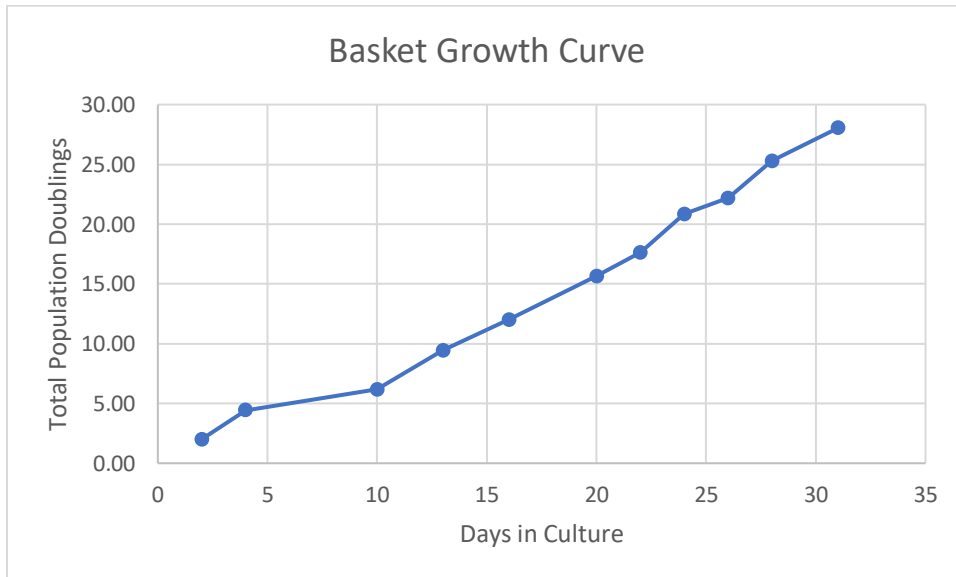
MUTATIONS (No Known Mutations)

DRUG RESPONSE

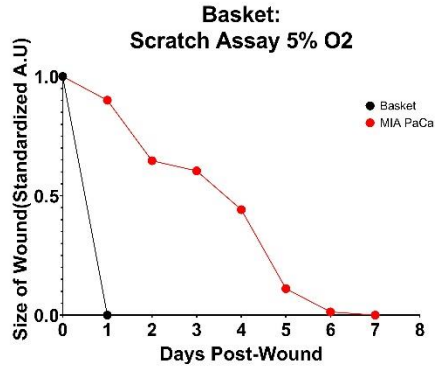
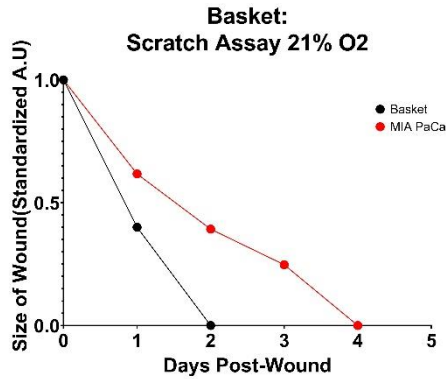


The Basket Cell Model demonstrates sensitivity to Cisplatin and Doxorubicin, while showing resistance to Olaparib.

BASKET GROWTH CHARACTERISTICS



The historical growth curve of Basket demonstrates consistent and rapid growth. Basket cells grow continuously for 15- passages.



PATIENT PROFILE

Disease Area	Cancer	TNM Stage	T3N1Mx
Tissue Type	Pancreas	Grade	G2
Clinical Diagnosis	Invasive, moderately differentiated ductal adenocarcinoma of the pancreatic head.	Country and Year of Collection	United States, 2016
Age	70-75	Treatment History	No prior treatment
Sex	Female	Co-Indications	Jaundice, Osteoporosis, Anxiety, Arthritis
Ethnicity	Caucasian	Medications	Raloxifene, Citalopram, Meloxicam, Simvastatin, Zolpidem

CELL LINE PROTOCOL

See <https://www.cellariabio.com/product/basket-cell-model/> for detailed Protocol

Thawing and Plating Instructions: See Certificate of Analysis for lot-specific details

STORAGE AND SAFETY

Storage and Stability: Store frozen in liquid nitrogen.



PRODUCT INFORMATION SHEET
Basket Pancreatic Cell Model
PROD-DOC-002 v1.3

Quality Control: All lots are tested for microbial and viral contamination, cell line cross-contamination, mycoplasma, and consistent growth capabilities. See Certificate of Analysis for further details.

NOTES

1. 3D cell culture of Cellaria™ models utilizes 5% Matrigel™ in Renaissance Essential Tumor Medium.