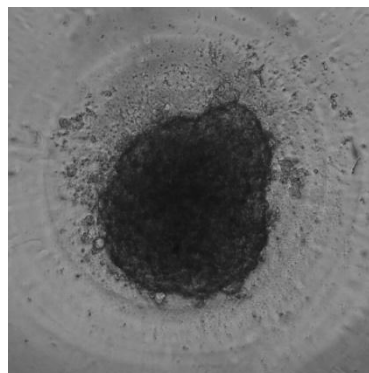
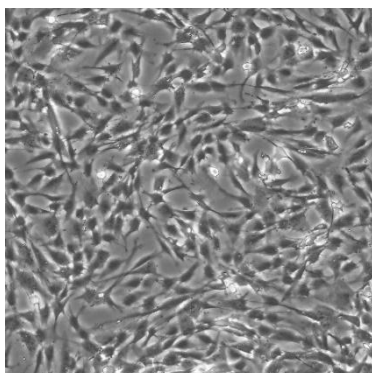


The Chocolate cell model originates from an adenocarcinoma of the pancreatic head

| <i>PRODUCT NAME</i> | <i>CATALOG NUMBER</i> | <i>SIZE</i> |
|---------------------------------|-----------------------|------------------------------|
| Chocolate Pancreatic Cell Model | CB-0502 | 1 Million Cells per Cryovial |



CELL LINE CHARACTERIZATION



MORPHOLOGY (2D vs. 3D¹)

MUTATIONS

| Gene | Alteration | Frequency (%) | Exon | Result |
|-------------|-------------------|----------------------|-------------|---------------------|
| CDKN2A | R58X | 34 | 2 | Pathogenic mutation |
| TP53 | E326X | 30 | 9 | Pathogenic mutation |
| KRAS | G12D | 19 | 2 | Pathogenic mutation |

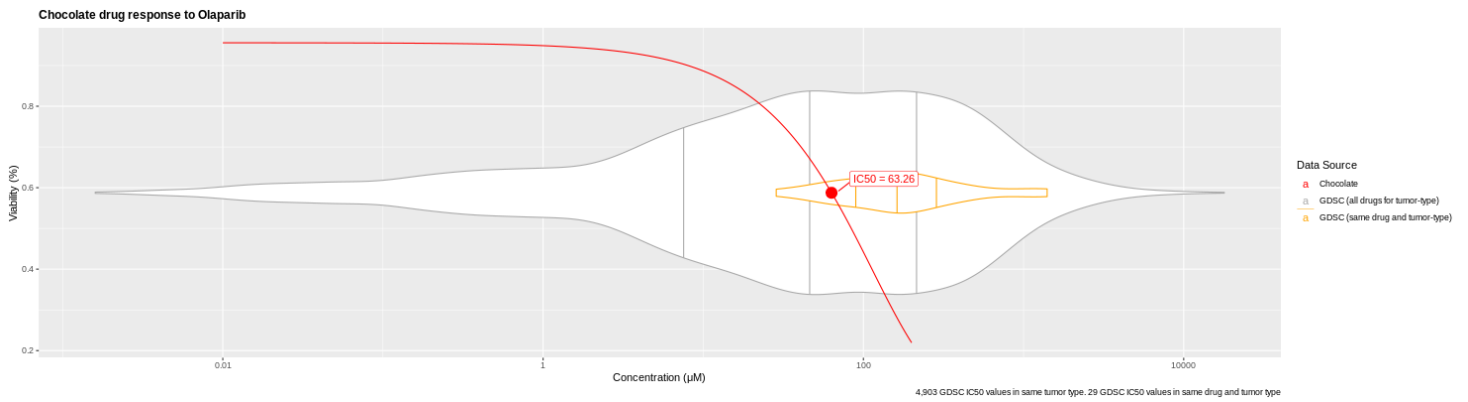
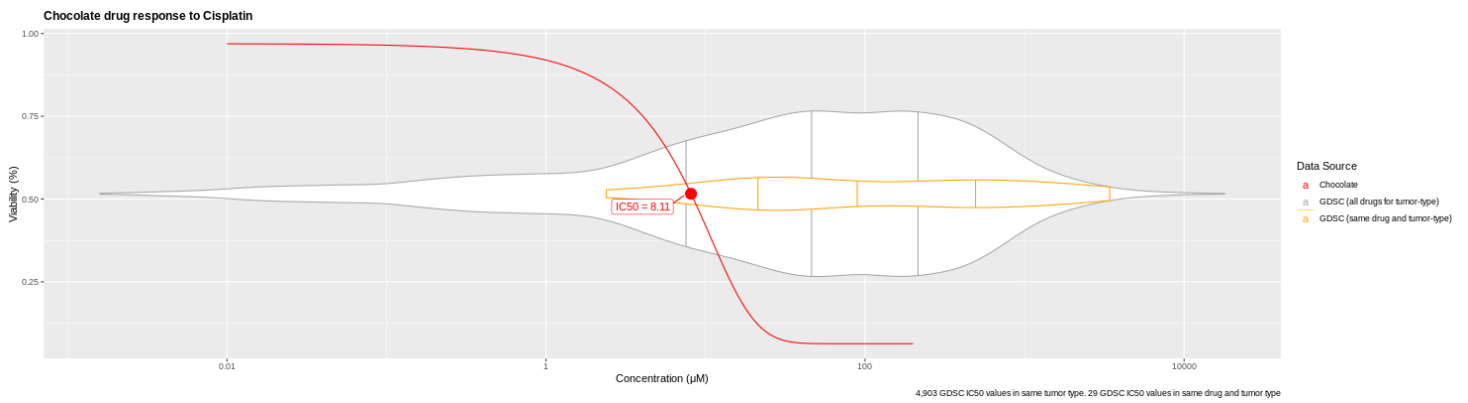


PRODUCT SHEET

Chocolate Pancreatic Cell Model

PROD-DOC-001 v1.3

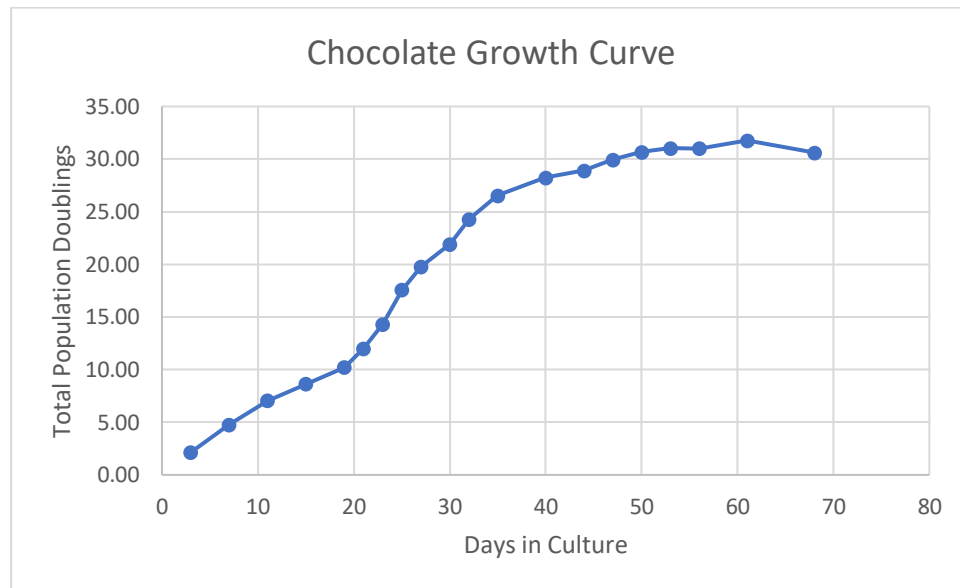
DRUG RESPONSE



The Chocolate Cell Model demonstrates sensitivity to Cisplatin and resistance to Olaparib.



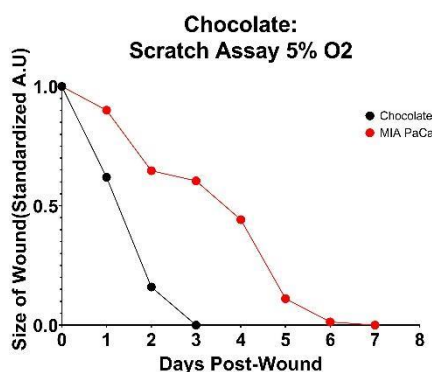
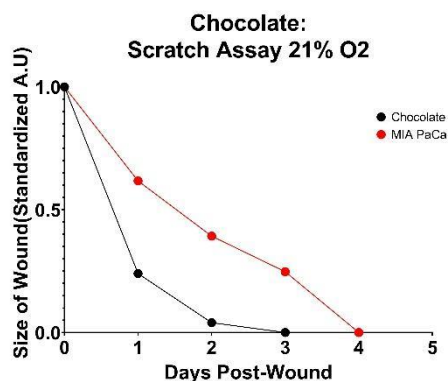
CHOCOLATE GROWTH CHARACTERISTICS



The historical growth curve of Chocolate demonstrates consistent and rapid growth. Chocolate cells grow continuously for 20-25 passages.



PRODUCT SHEET
Chocolate Pancreatic Cell Model
PROD-DOC-001 v1.3



PATIENT PROFILE

| | | | |
|---------------------------|--|---------------------------------------|---|
| Disease Area | Cancer | TNM Stage | T3N0Mx |
| Tissue Type | Pancreas | Grade | N/A |
| Clinical Diagnosis | Ductal type, poorly differentiated adenocarcinoma of the pancreatic head | Country and Year of Collection | United States, 2016 |
| Age | 50-55 | Treatment History | No prior treatment |
| Sex | Female | Co-Indications | Diabetes Mellitus, Jaundice, Biliary stricture |
| Ethnicity | Caucasian | Medications | Insulin Aspart, Insulin Glargine, Hydromorphone |

CELL LINE PROTOCOL

See <https://www.cellariabio.com/product/chocolate-cell-model/> for detailed Protocol

Thawing and Plating Instructions: See Certificate of Analysis for lot-specific details

11 Audubon Road | Wakefield, MA 01880 | www.cellariainc.com

JUL2020



PRODUCT SHEET
Chocolate Pancreatic Cell Model
PROD-DOC-001 v1.3

STORAGE AND SAFETY

Storage and Stability: Store frozen in liquid nitrogen.

Quality Control: All lots are tested for microbial and viral contamination, cell line cross-contamination, mycoplasma, and consistent growth capabilities. See Certificate of Analysis for further details.

NOTES

1. 3D cell culture of Cellaria™ models utilizes 5% Matrigel™ in Renaissance Essential Tumor Medium.