

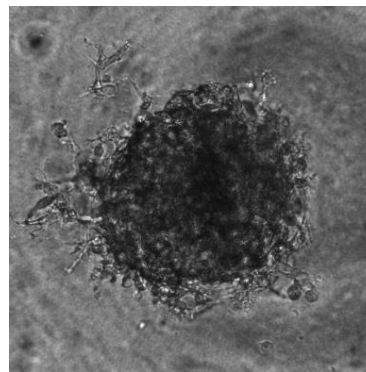
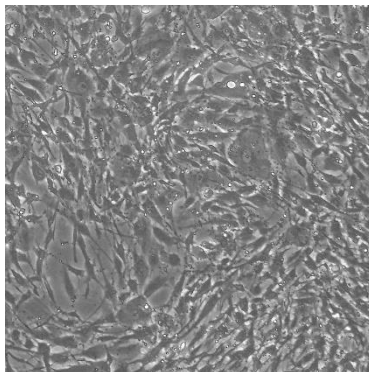
The Stew cell model originates from an adenocarcinoma of the pancreatic head



<i>PRODUCT NAME</i>	<i>CATALOG NUMBER</i>	<i>SIZE</i>
Stew Pancreatic Cell Model	CB-0501	1 Million Cells per Cryovial



CELL LINE CHARACTERIZATION



MORPHOLOGY (2D vs. 3D¹)

MUTATIONS

Gene	Alteration	Frequency (%)	Exon	Result
KRAS	G12V	11	2	Pathogenic mutation
TP53	R337L	12	10	Pathogenic mutation
WT1	R434H	10	8	Pathogenic mutation

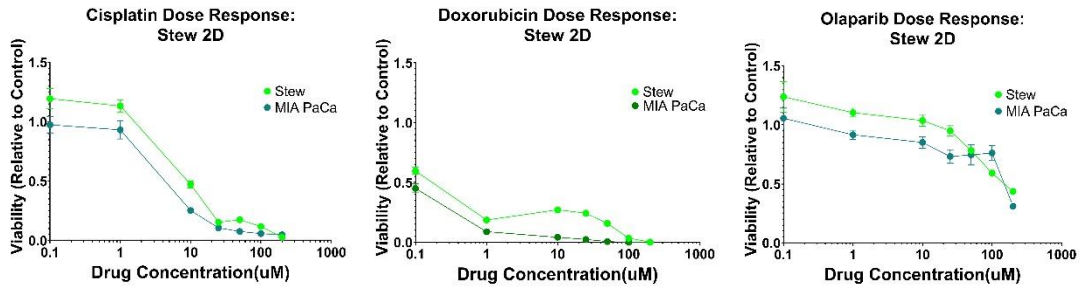


PRODUCT INFORMATION SHEET

Stew Pancreatic Cell Model

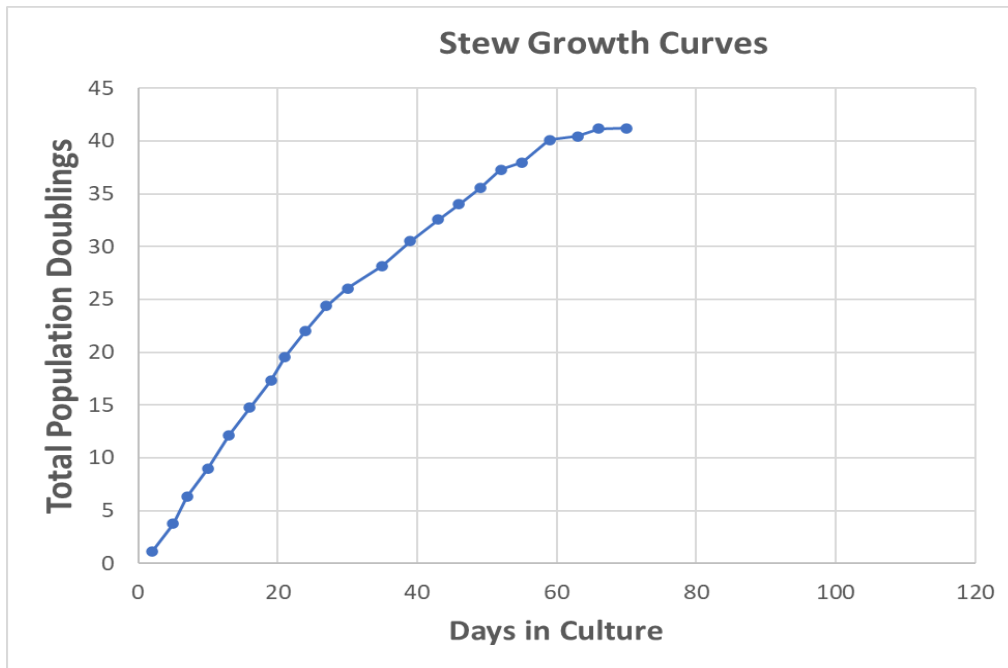
PROD-DOC-003 v1.3

DRUG RESPONSE

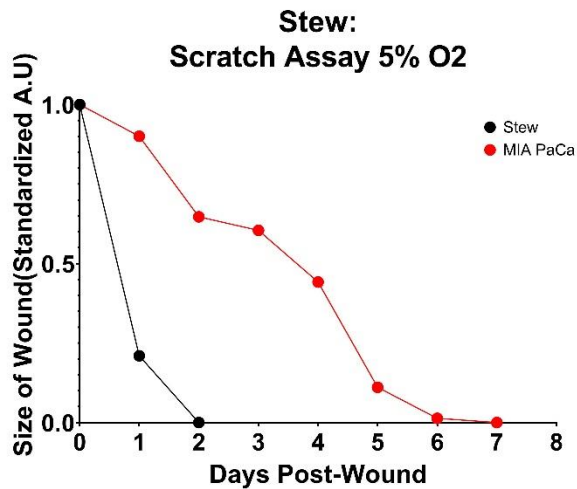
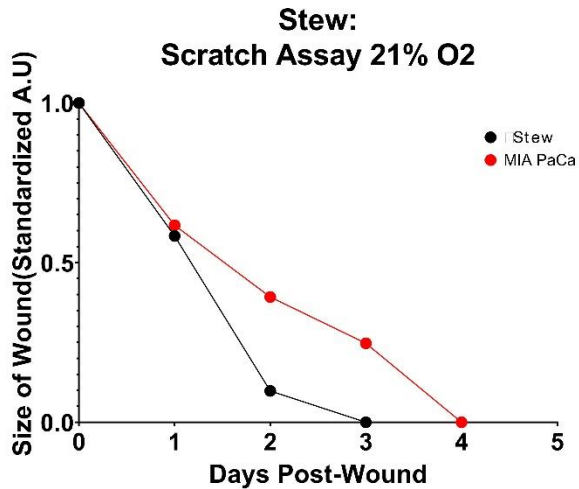


The Stew Cell Model demonstrates sensitivity to Cisplatin and Doxorubicin, while exhibiting resistance to Olaparib

STEW GROWTH CHARACTERISTICS



The historical growth curve of Stew demonstrates consistent and rapid growth. Stew cells grow continuously for 20-25 passages.



PATIENT PROFILE

Disease Area	Cancer	TNM Stage	T3N1M0
Tissue Type	Pancreas	Staging Group	G2
Clinical Diagnosis	Invasive moderately differentiated adenocarcinoma of the pancreatic head	Country and Year of Collection	United States, 2016
Age	65-70	Treatment History	No prior treatment
Sex	Male	Co-Indications	Diabetes Mellitus, Congestive Heart Failure, COPD, Emphysema, Arthritis
Ethnicity	Caucasian	Medications	Insulin Glargine, Simvastatin, Clopidogrel, Fluoxetine, Gemfibrozil, Metformin, Metoprolol, Pancrelipase, Ranolazine



PRODUCT INFORMATION SHEET
Stew Pancreatic Cell Model
PROD-DOC-003 v1.3

CELL LINE PROTOCOL

See <https://www.cellariabio.com/product/stew-cell-model/> for detailed Protocol

Thawing and Plating Instructions: See Certificate of Analysis for lot-specific details

STORAGE AND SAFETY

Storage and Stability: Store frozen in liquid nitrogen.

Quality Control: All lots are tested for microbial and viral contamination, cell line cross-contamination, mycoplasma, and consistent growth capabilities. See Certificate of Analysis for further details.

NOTES

1. 3D cell culture of Cellaria™ models utilizes 5% Matrigel™ in Renaissance Essential Tumor Medium.