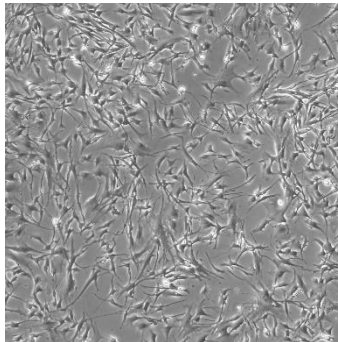


The Throne Cell Model

<i>PRODUCT NAME</i>	<i>CATALOG NUMBER</i>	<i>SIZE</i>
Throne Lung Cell Model	CB-0305	1 Million Cells per Cryovial



CELL LINE CHARACTERIZATION



MORPHOLOGY (2D)

MUTATIONS

Gene	Alteration	Frequency (%)	Exon	Result
POT1	G95C	29	8	Mutated, Variant of Unknown Significance
BRAF	G464V	26	11	Mutated, Pathogenic
KRAS	G13C	26	2	Mutated, Pathogenic
NF1	P678fs	17	18	Mutated, Pathogenic
POT1	E262X	15	10	Mutated, Pathogenic

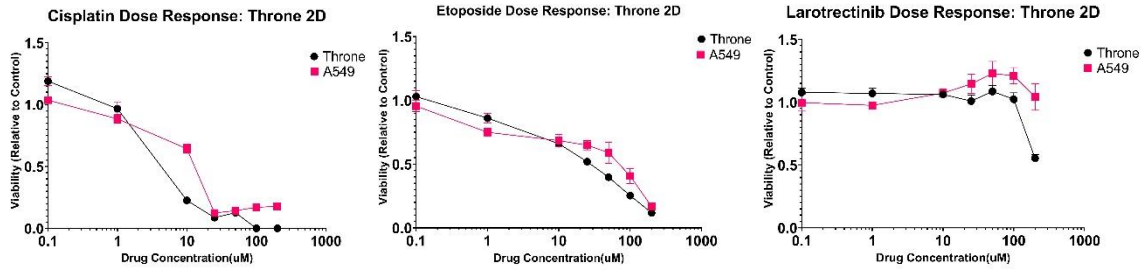


PRODUCT INFORMATION SHEET

Throne Lung Cell Model

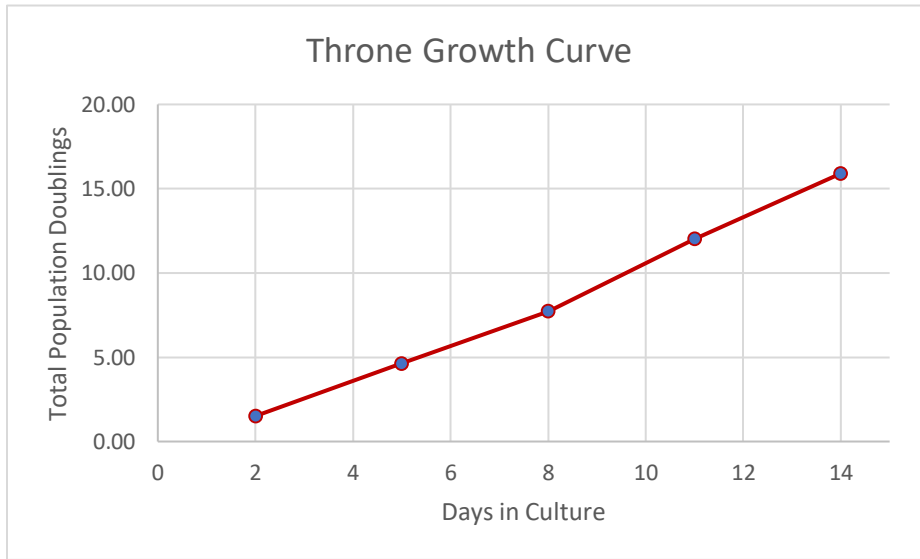
PROD-DOC-014 v0.2

THRONE DRUG RESPONSE

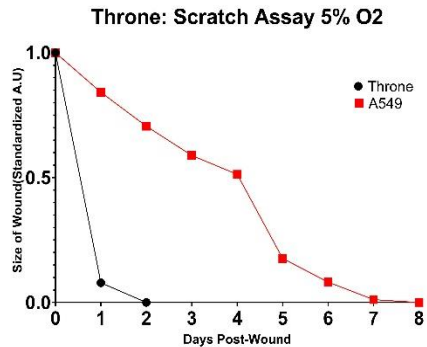
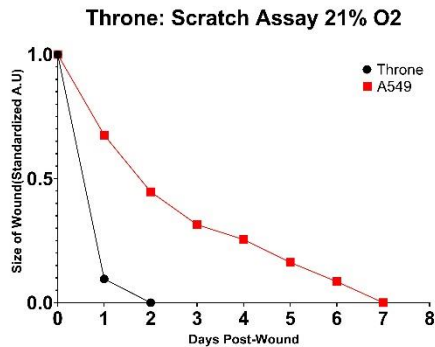


The Throne Cell Model demonstrates sensitivity to Cisplatin and Etoposide, while showing resistance to Larotrectinib.

THRONE GROWTH CHARACTERISTICS



The growth curve of Throne demonstrates consistent and rapid growth. Throne cells grow continuously for 15+ passages.



PATIENT PROFILE

Disease Area	Cancer	TNM Stage	T2aN2MX
Tissue Type	Lung	Grade	IIIA
Clinical Diagnosis	Adenocarcinoma, Mixed Subtype	Country and Year of Collection	United States, 2016
Age	80-85	Treatment History	No prior treatment
Sex	Male	Co-Indications	Right lung, non-small cell carcinoma, Melanoma of the nose, Knee replacement surgery, Tonsillectomy, Arthritis, Hypertension, Hypercholesterolemia
Ethnicity	Unknown	Medications	Simvastatin, Omeprazole, Montelukast, Lisinopril, Hydrochlorothiazide, Acetaminophen and hydrocodone, Fluticasone nasal, Celecoxib, Finasteride, Doxazosin, Benzonatate, Ascorbic acid



PRODUCT INFORMATION SHEET
Throne Lung Cell Model
PROD-DOC-014 v0.2

CELL LINE PROTOCOL

See Passaging Protocol: Lung Cohort for detailed Protocol

STORAGE AND SAFETY

Storage and Stability: Store frozen in liquid nitrogen.

Quality Control: All lots are tested for consistent growth capabilities. See Certificate of Analysis for further details.

NOTES