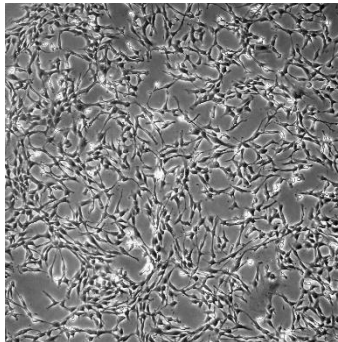


The Pincer cell model

<i>PRODUCT NAME</i>	<i>CATALOG NUMBER</i>	<i>SIZE</i>
Pincer Lung Cell Model	CB-0304	1 Million Cells per Cryovial



CELL LINE CHARACTERIZATION

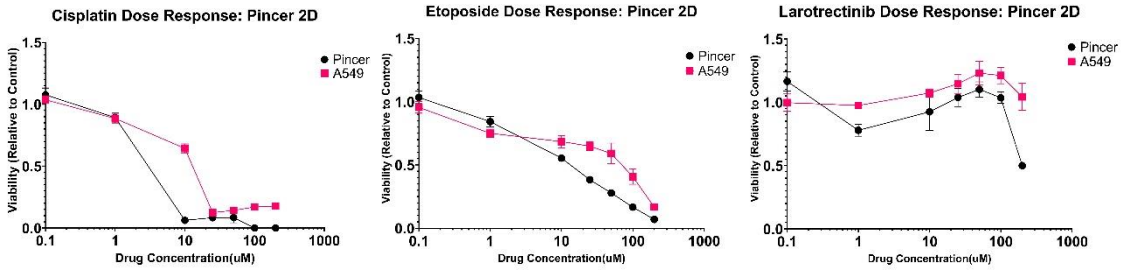


MORPHOLOGY (2D)

MUTATIONS

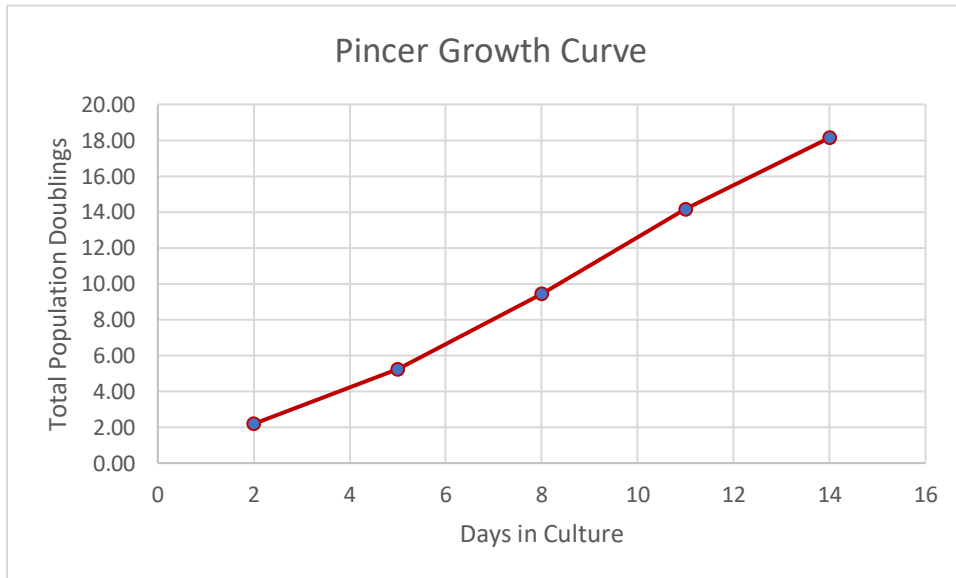
Gene	Alteration	Frequency (%)	Exon	Result
PBRM1	A1073S	75	21	Mutated, Variant of Unknown Significance
BMPR1A	R443C	70	11	Mutated, Variant of Unknown Significance
TP53	N239S	47	7	Mutated, Presumed Pathogenic
RAF1	S259F	46	7	Mutated, Pathogenic
SMO	R709fs	12	12	Mutated, Variant of Unknown Significance
KDR (VEGFR2)	E730K	8	15	Mutated, Variant of Unknown Significance

PINCER DRUG RESPONSE

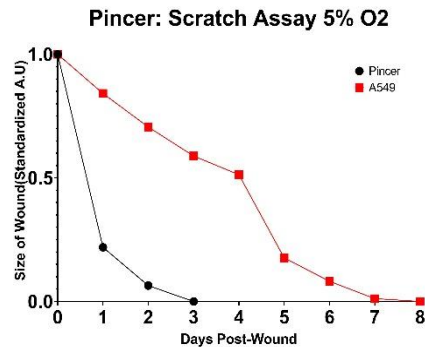
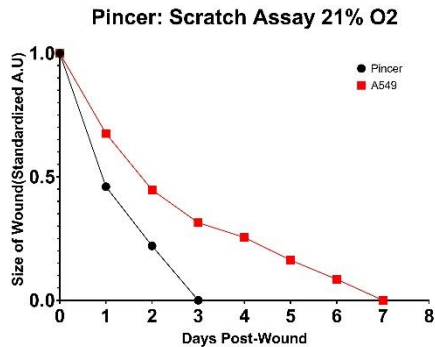


The Pincer Cell Model demonstrates sensitivity to Cisplatin and Etoposide, while showing resistance to Larotrectinib.

PINCER GROWTH CHARACTERISTICS



The growth curve of Pincer demonstrates consistent and rapid growth. Pincer cells grow continuously for 15+ passages.



PATIENT PROFILE

Disease Area	Cancer	TNM Stage	T2aN0MX
Tissue Type	Lung	Grade	IB
Clinical Diagnosis	Adenocarcinoma, Invasive	Country and Year of Collection	United States, 2016
Age	65-70	Treatment History	No prior treatment
Sex	Female	Co-Indications	Sensory loss in hands, Joint crepitus, Osteoarthritis, Seizure disorder, Lung nodule, Malignant neoplasm of the lung, Chronic obstructive pulmonary disease, Irritable bowel syndrome, Hypertension, Arthritis, Hypothyroidism, Depression, Hyperlipidemia
Ethnicity	Caucasian	Medications	Metoprolol, Albuterol, Dicyclomine, Cyclobenzaprine, Fluticasone and salmeterol, Memantine HCl, Donepezil, Diphenhydramine, Tiotropium bromide monohydrate, Ropinirole



PRODUCT INFORMATION SHEET
Pincer Lung Cell Model
PROD-DOC-013 v0.2

CELL LINE PROTOCOL

See Passaging Protocol: Lung Cohort for detailed Protocol

STORAGE AND SAFETY

Storage and Stability: Store frozen in liquid nitrogen.

Quality Control: All lots are tested for consistent growth capabilities. See Certificate of Analysis for further details.

NOTES