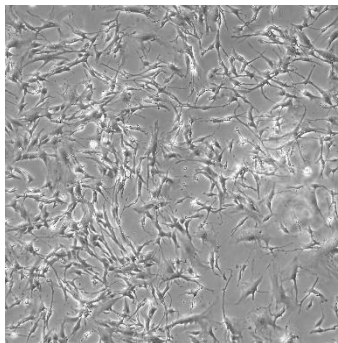


The Boulder Cell Model

<i>PRODUCT NAME</i>	<i>CATALOG NUMBER</i>	<i>SIZE</i>
Boulder Lung Cell Model	CB-0303	1 Million Cells per Cryovial



CELL LINE CHARACTERIZATION



MORPHOLOGY (2D)

MUTATIONS

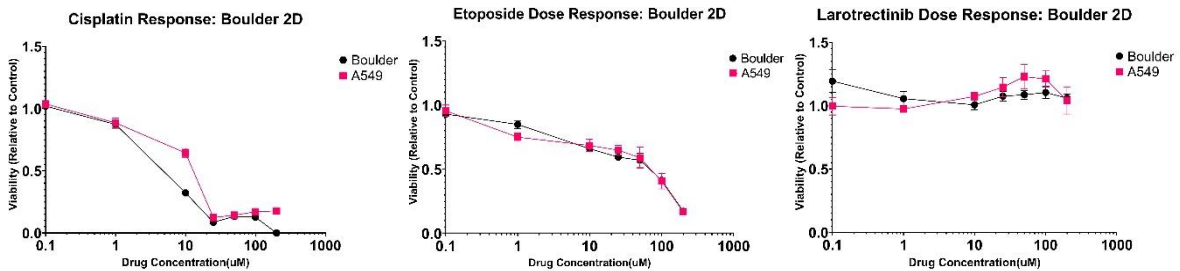
Gene	Alteration	Frequency (%)	Exon	Result
APC	K2524E	63	16	Mutated, Variant of Unknown Significance
SMARCA4	T1425S	62	31	Mutated, Variant of Unknown Significance
ATM	T1697A	54	34	Mutated, Variant of Unknown Significance
TP53	R248L	37	7	Mutated, Pathogenic
PTPN11	R498L	35	13	Mutated, Pathogenic
CDKN2A	R58Q	33	2	Mutated, Variant of Unknown Significance



PRODUCT INFORMATION SHEET
Boulder Lung Cell Model
PROD-DOC-012 v1.0

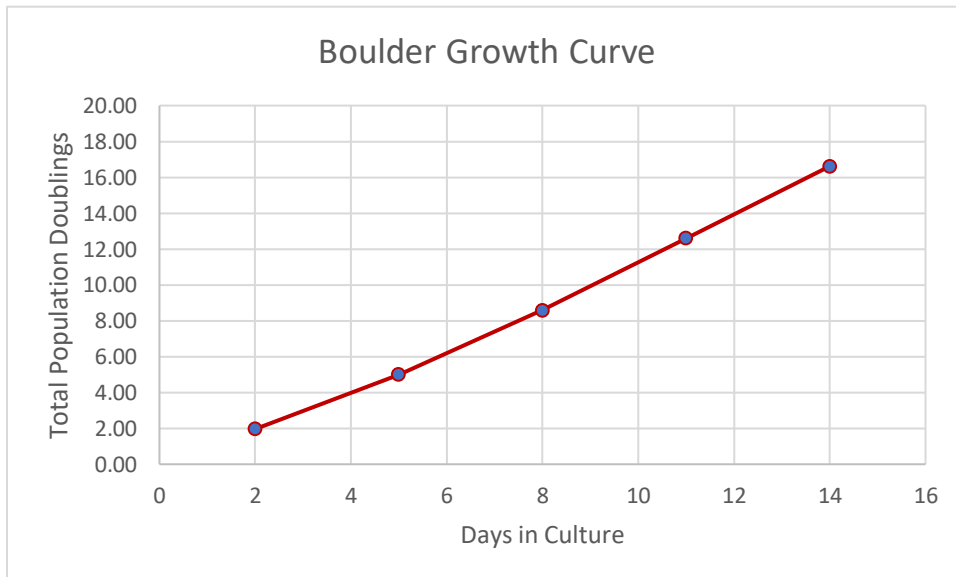
CDKN2A	L16fs	29	1	Mutated, Pathogenic
SMO	L23dup	16	1	Mutated, Presumed Benign
TSC1	R204H	9	7	Mutated, Variant of Unknown Significance

BOULDER DRUG RESPONSE

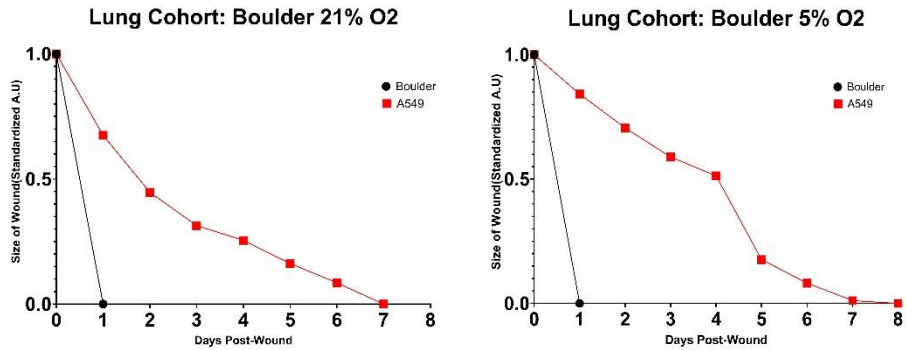


The Boulder Cell Model demonstrates sensitivity to Cisplatin and Etoposide, while showing resistance to Larotrectinib.

BOULDER GROWTH CHARACTERISTICS



The growth curve of Boulder demonstrates consistent and rapid growth. Boulder cells grow continuously for 15 passages.



PATIENT PROFILE

Disease Area	Cancer	TNM Stage	T1aN0MX
Tissue Type	Lung	Grade	IA
Clinical Diagnosis	Squamous cell carcinoma	Country and Year of Collection	United States, 2016
Age	65-70	Treatment History	No prior treatment
Sex	Male	Co-Indications	Abdominal aneurysm, Chronic obstructive pulmonary disease, Gastroesophageal reflux disease, Hiatal hernia, Hypertension, Hyperlipidemia, Motion sickness, Shortness of breath, Transient ischemic attack, Inguinal hernia with surgical repair, Appendectomy, Tonsillectomy, Cataracts with surgical intervention, Surgery of the mandible, Emphysema
Ethnicity	Caucasian	Medications	Prednisone, Budesonide and formoterol fumarate, Pantoprazole, Tiotropium, Amlodipine, Chondroitin and glucosamine and methylsulfonylmethane, Albuterol, Pravastatin



PRODUCT INFORMATION SHEET
Boulder Lung Cell Model
PROD-DOC-012 v1.0

CELL LINE PASSAGING PROTOCOL

See Passaging Protocol: Lung Cohort for detailed Protocol

STORAGE AND SAFETY

Storage and Stability: Store frozen in liquid nitrogen.

Quality Control: All lots are tested for consistent growth capabilities. See Certificate of Analysis for further details.