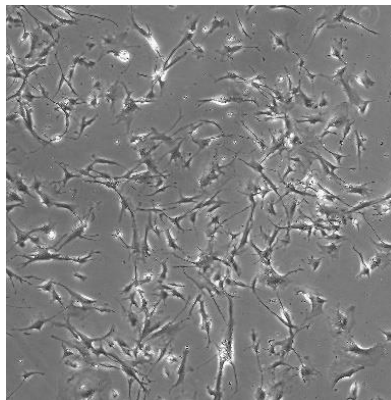


## The Bastion Cell Model

<i>PRODUCT NAME</i>	<i>CATALOG NUMBER</i>	<i>SIZE</i>
Bastion Lung Cell Model	CB-0302	1 Million Cells per Cryovial



### CELL LINE CHARACTERIZATION



**MORPHOLOGY (2D)**

### MUTATIONS

<b>Gene</b>	<b>Alteration</b>	<b>Frequency (%)</b>	<b>Exon</b>	<b>Result</b>
None Reported				

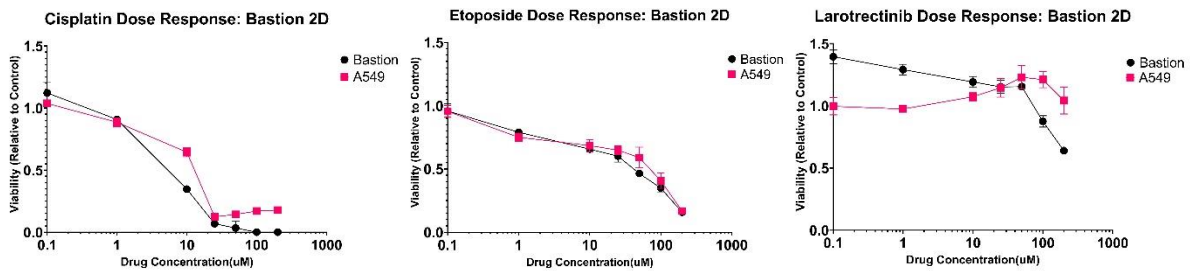


# PRODUCT INFORMATION SHEET

## Bastion Lung Cell Model

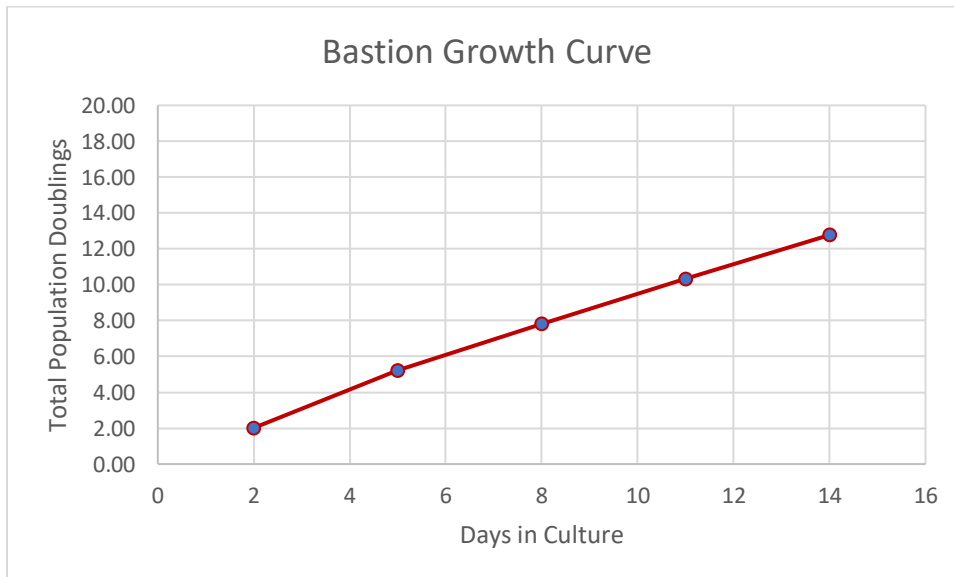
### PROD-DOC-011 v0.2

## BASTION DRUG RESPONSE

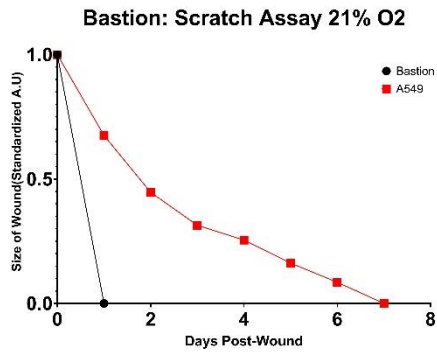


The Bastion Cell Model demonstrates sensitivity to Cisplatin and Etoposide, while showing resistance to Larotrectinib.

## BASTION GROWTH CHARACTERISTICS



The historical growth curve of Bastion demonstrates consistent and rapid growth. Bastion cells grow continuously for 15+ passages.



**PATIENT PROFILE**

<b>Disease Area</b>	Cancer	<b>TNM Stage</b>	T1aNXM0
<b>Tissue Type</b>	Lung	<b>Grade</b>	IA
<b>Clinical Diagnosis</b>	Squamous cell carcinoma	<b>Country and Year of Collection</b>	United States, 2016
<b>Age</b>	70-75	<b>Treatment History</b>	No prior treatment
<b>Sex</b>	Female	<b>Co-Indications</b>	Hyperlipidemia, Hypertension, Chronic obstructive pulmonary disease, Hyperthyroidism, Gastroesophageal reflux disease, Arthritis, Hysterectomy, Colon resection.
<b>Ethnicity</b>	Caucasian	<b>Medications</b>	Advair, Calcium carbonate and vitamin D, Nexium, Tiotropium bromide, Cozaar, Synthroid, Boniva, Lasix, Lipitor



**PRODUCT INFORMATION SHEET**  
**Bastion Lung Cell Model**  
**PROD-DOC-011 v0.2**

---

**CELL LINE PROTOCOL**

See Passaging Protocol: Lung Cohort for detailed Protocol

**STORAGE AND SAFETY**

**Storage and Stability:** Store frozen in liquid nitrogen.

**Quality Control:** All lots are tested for consistent growth capabilities. See Certificate of Analysis for further details.