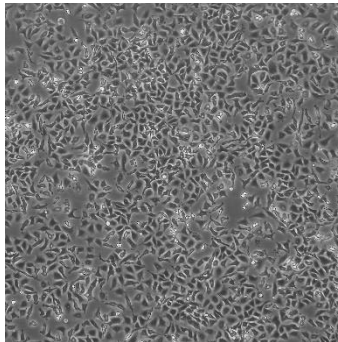


The Jacket cell model

<i>PRODUCT NAME</i>	<i>CATALOG NUMBER</i>	<i>SIZE</i>
Jacket Lung Cell Model	CB-0301	1 Million Cells per Cryovial



CELL LINE CHARACTERIZATION

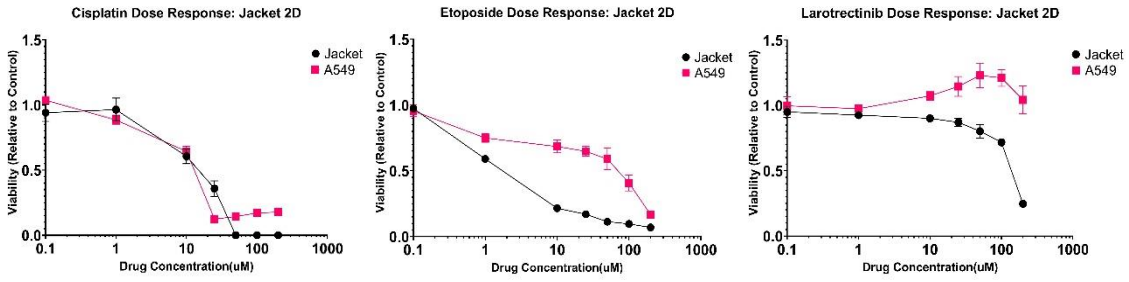


MORPHOLOGY (2D)

MUTATIONS

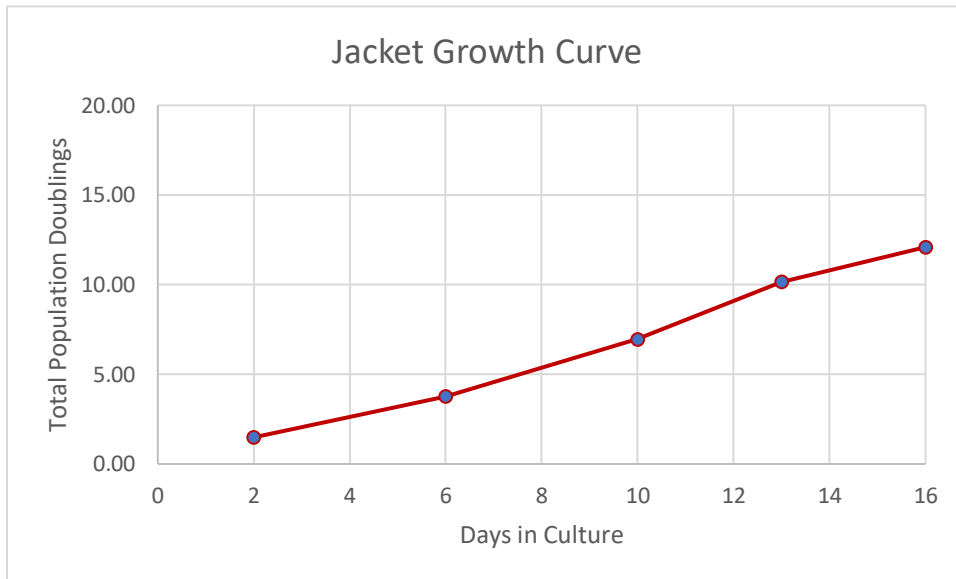
Gene	Alteration	Frequency (%)	Exon	Result
Androgen Receptor	F814V	100	6	Mutated, Presumed Pathogenic
KRAS	G12A	100	2	Mutated, Pathogenic
TP53	S215G	100	6	Mutated, Presumed Pathogenic
MUTYH	V493M	62	15	Mutated, Variant of Unknown Significance
MSH6	G477S	32	4	Mutated, Variant of Unknown Significance

JACKET DRUG RESPONSE

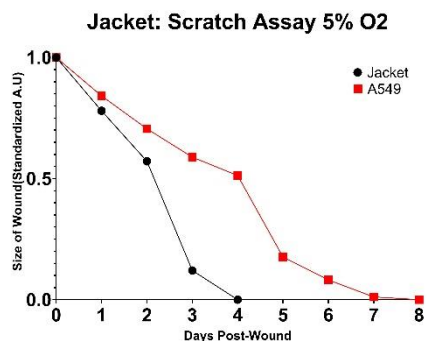
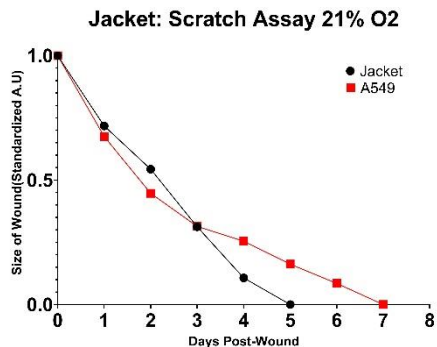


The Jacket Cell Model demonstrates sensitivity to Cisplatin and Etoposide, while showing resistance to Larotrectinib.

JACKET GROWTH CHARACTERISTICS



The growth curve of Jacket demonstrates consistent and rapid growth. Jacket cells grow continuously for 15+ passages.



PATIENT PROFILE

Disease Area	Cancer	TNM Stage	T2aN0MX
Tissue Type	Lung	Grade	IB
Clinical Diagnosis	Adenocarcinoma of the Lung	Country and Year of Collection	United States, 2016
Age	55-60	Treatment History	No prior treatment
Sex	Male	Co-Indications	Acute osteomyelitis of the hip, Hernia repair
Ethnicity	Caucasian	Medications	Ibuprofen



PRODUCT INFORMATION SHEET
Jacket Lung Cell Model
PROD-DOC-010 v1.0

CELL LINE PASSAGING PROTOCOL

See Passaging Protocol: Lung Cohort for detailed Protocol

STORAGE AND SAFETY

Storage and Stability: Store frozen in liquid nitrogen.

Quality Control: All lots are tested for consistent growth capabilities. See Certificate of Analysis for further details.