

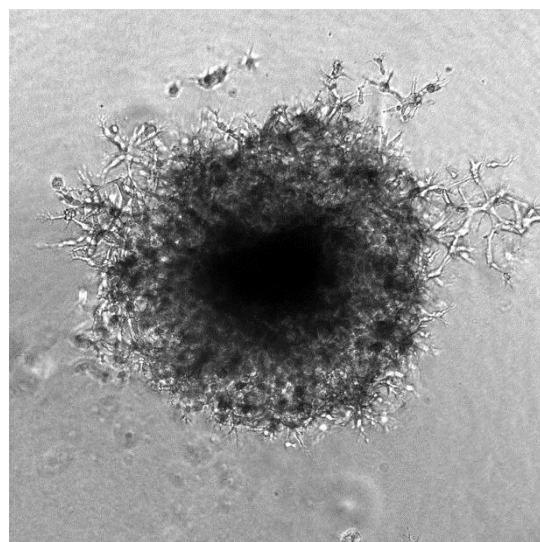
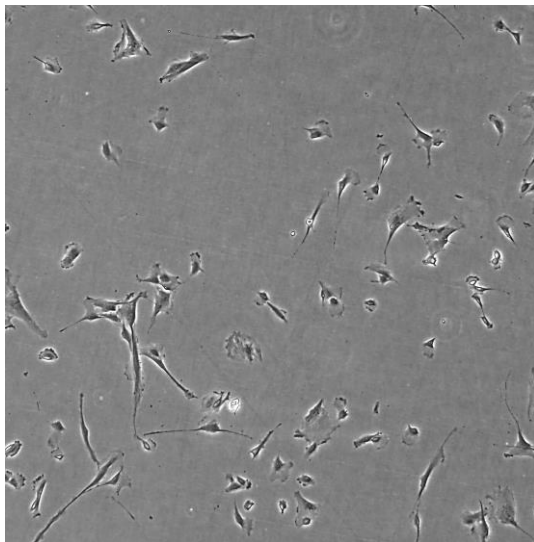
The Powder cell model originates from serous carcinoma of the ovary



<i>PRODUCT NAME</i>	<i>CATALOG NUMBER</i>	<i>SIZE</i>
Powder Ovarian Cell Model	CB-0111	1 Million Cells per Cryovial



CELL LINE CHARACTERIZATION



4X MORPHOLOGY (2D vs. 3D¹)

MUTATIONS

Gene	Alteration	Frequency (%)	Exon	Result
SMO	L23dup	28	1	Mutated, Presumed Benign

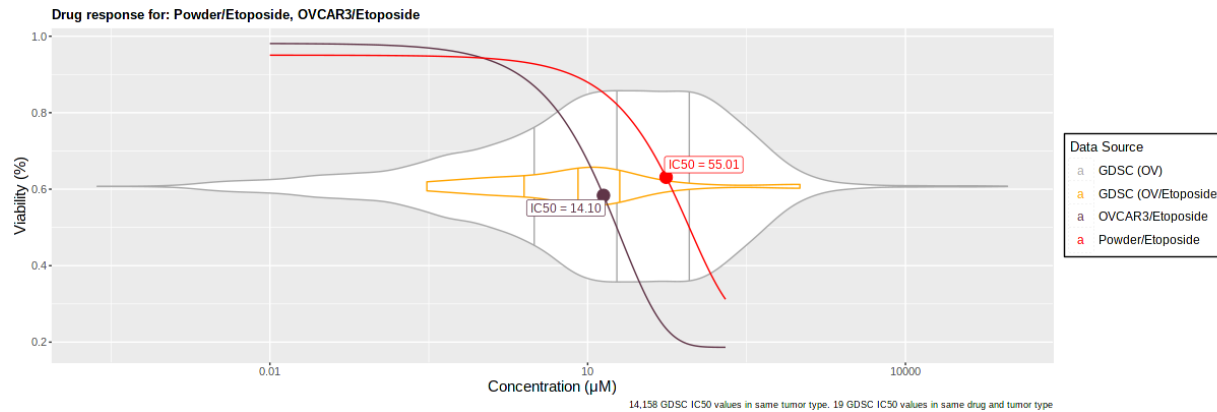
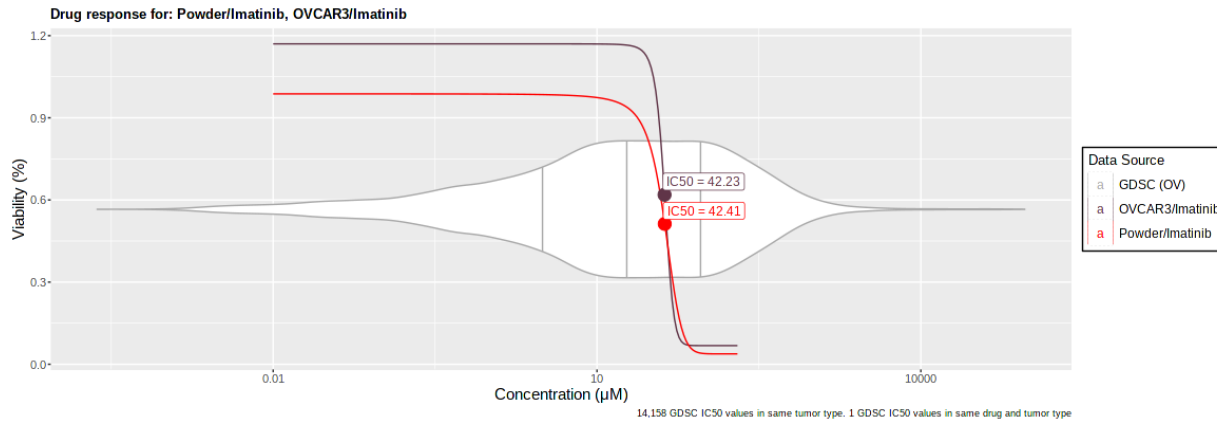
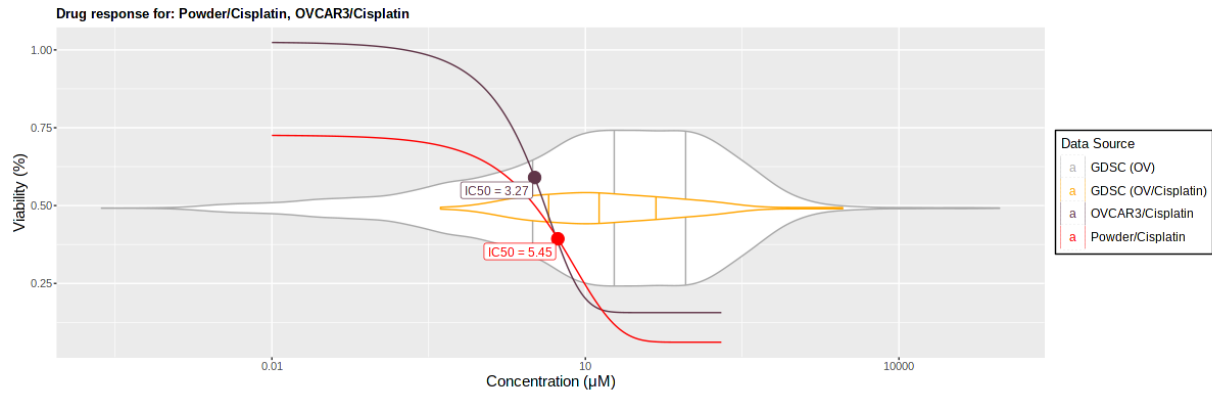


PRODUCT INFORMATION SHEET

Powder Ovarian Cell Model

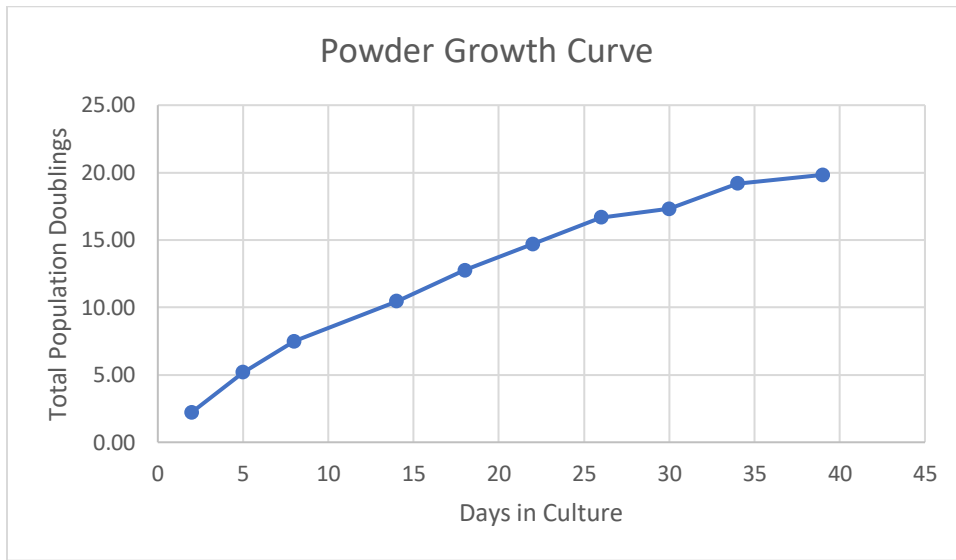
PROD-DOC-004 v1.0

DRUG RESPONSE



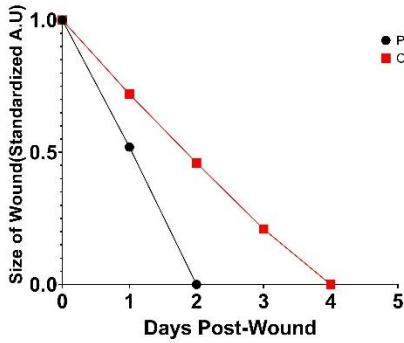
The Powder Cell Model demonstrates sensitivity to Cisplatin and Imatinib, while showing resistance to Etoposide.

POWDER GROWTH CHARACTERISTICS

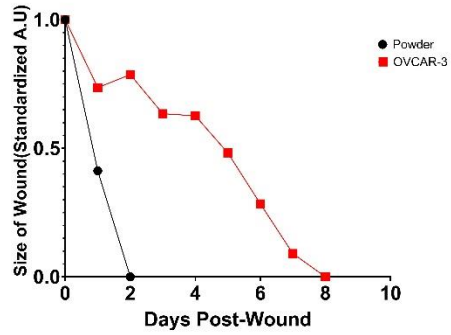


The growth curve of Powder demonstrates consistent and rapid growth. Powder cells grow continuously for 10-14 passages. Median lifetime doubling time of 1.9 days.

Scratch Assay 21% O2: Ovarian Lines



Scratch Assay 5% O2: Ovarian Lines





PRODUCT INFORMATION SHEET
Powder Ovarian Cell Model
PROD-DOC-004 v1.0



PATIENT PROFILE

Disease Area	Cancer	TNM Stage	T3cN1M1
Tissue Type	Ovary	Staging Group	IV
Clinical Diagnosis	Serous carcinoma of the ovary	Country of Collection	United States
Age	65-69	Year of Origin	2012
Sex	Female	Treatment History	No prior treatment
Ethnicity	Caucasian	Concurrent Diseases	N/a

CELL LINE PROTOCOL

See <https://cellariainc.com/product/powder-cell-model/> for detailed Protocol

Thawing and Plating Instructions: See Certificate of Analysis for lot-specific details



PRODUCT INFORMATION SHEET
Powder Ovarian Cell Model
PROD-DOC-004 v1.0

STORAGE AND SAFETY

Storage and Stability: Store frozen in liquid nitrogen.

Quality Control: All lots are tested for microbial and viral contamination, cell line cross-contamination, mycoplasma, and consistent growth capabilities. See Certificate of Analysis for further details.

NOTES

1. 3D cell culture of Cellaria™ models utilizes 5% Matrigel™ in Renaissance Essential Tumor Medium.