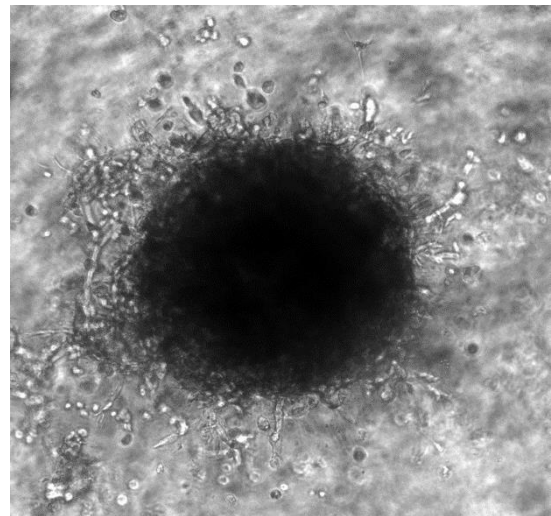
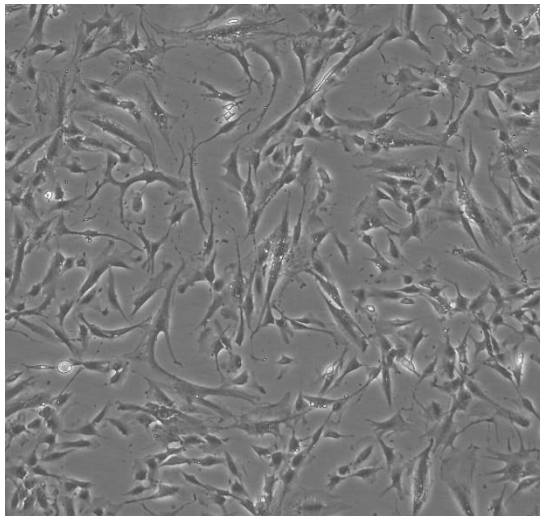


The Carousel cell model originates from endometrioid adenocarcinoma of the ovary.

<i>PRODUCT NAME</i>	<i>CATALOG NUMBER</i>	<i>SIZE</i>
Carousel Ovarian Cell Model	CB-0101	1 Million Cells per Cryovial



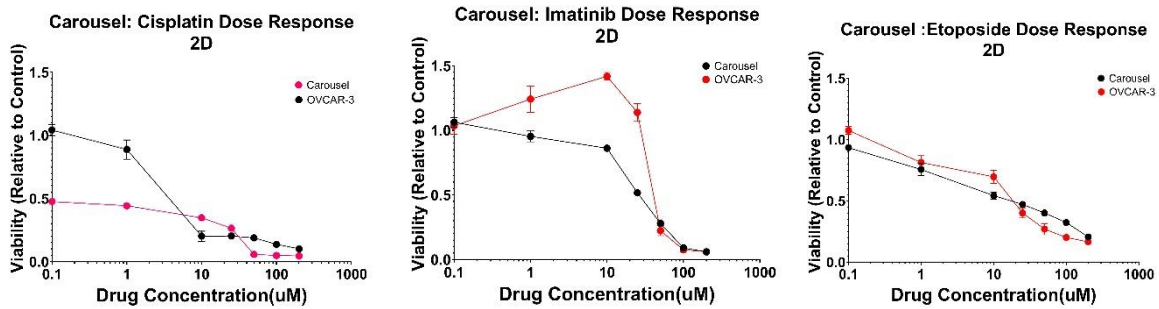
CELL LINE CHARACTERIZATION



MORPHOLOGY (2D vs. 3D¹)

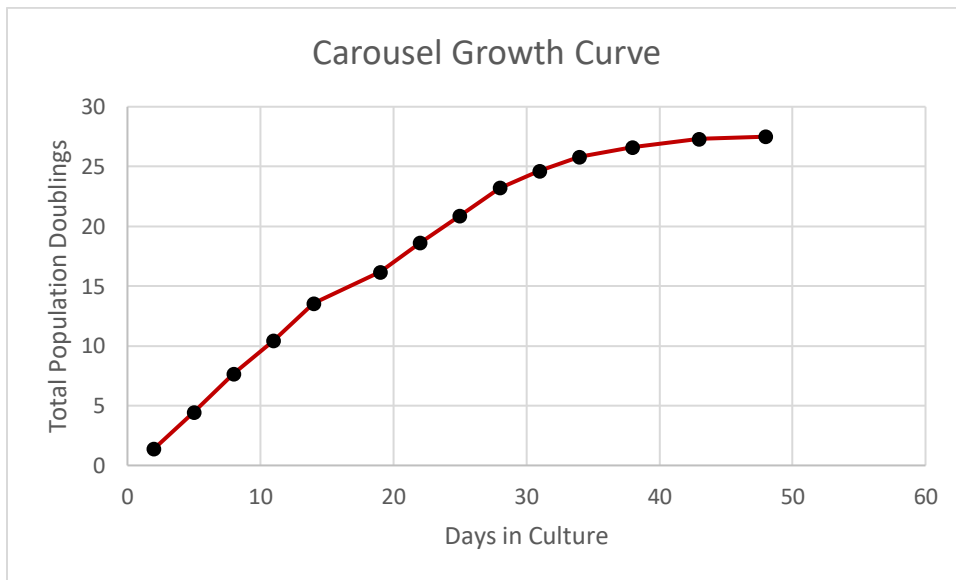
MUTATIONS (No Known Mutations)

DRUG RESPONSE

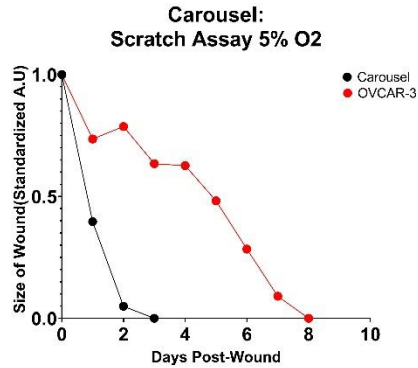
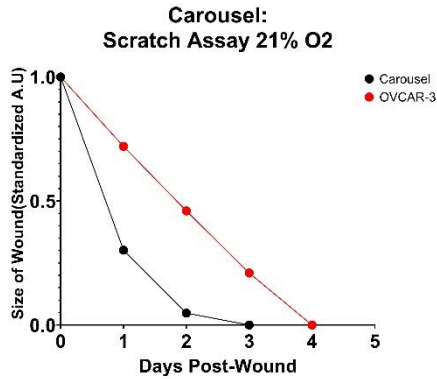


The Carousel Cell Model demonstrates sensitivity to Cisplatin and Imatinib, while showing resistance to Etoposide.

CAROUSEL GROWTH CHARACTERISTICS



The historical growth curve of Carousel demonstrates consistent and rapid growth. Carousel ovarian cells grow continuously for 15 passages.



PATIENT PROFILE

Disease Area	Cancer	TNM Stage	T1cN0M1
Tissue Type	Ovarian	Grade	IV
Clinical Diagnosis	Endometrioid adenocarcinoma of the ovary	Country and Year of Collection	United States, 2013
Age	65-69	Treatment History	No prior treatment
Sex	Female	Co-Indications	N/a
Ethnicity	Caucasian	Medications	N/a

CELL LINE PROTOCOL



Scan QR code to access or download the Carousel Passing Protocol.

Thawing and Plating Instructions: See Certificate of Analysis for lot-specific details



PRODUCT INFORMATION SHEET
Carousel Ovarian Cell Model
PROD-DOC-020 v1.0

STORAGE AND SAFETY

Storage and Stability: Store frozen in liquid nitrogen.

Quality Control: All lots are tested for microbial and viral contamination, cell line cross-contamination, mycoplasma, and consistent growth capabilities. See Certificate of Analysis for further details.

NOTES

1. 3D cell culture of Cellaria™ models utilizes 5% Matrigel™ in Renaissance Essential Tumor Medium.