



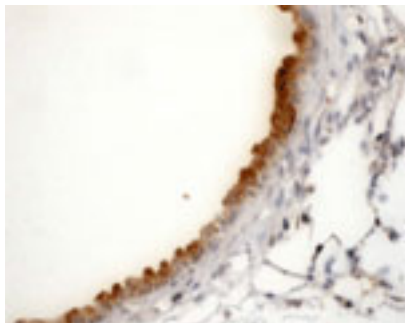
Rabbit antibody to Clathrin (619-638): whole serum

Catalogue No.:	R-165-100
Description:	Clathrin is a major protein component of the polyhedral coat of coated pits and vesicles. Two different adapter protein complexes link the clathrin lattice to either the plasma membrane or the trans-Golgi network. These specialised organelles are involved in the intracellular trafficking of receptors and endocytosis of a variety of macromolecules. Clathrin triskelions, composed of 3 heavy chains and 3 light chains, are the basic subunits of the clathrin coat. In the presence of light chains, hub assembly is influenced by both the pH and the concentration of calcium. Clathrin localises to the cytoplasmic face of coated pit and vesicle membranes.
Batch No.:	See product label
Unit size:	100 µl
Antigen:	A synthetic peptide (KAGLLQRALEHFTDLYDIKR) corresponding to the amino acids 619-638 of rat clathrin conjugated to diphtheria toxin has been used as the immunogen. The peptide is homologous with the corresponding sequence derived from clathrin protein in mouse, human and bovine.
Other Names:	Clathrin heavy chain; Clathrin heavy chain 1; CLH-17; CLTC
Accession:	CLH_RAT
Produced in:	Rabbit
Purity:	Whole serum
Applications:	IHC, WB. This antibody works in immunohistochemistry on frozen or paraffin embedded tissues. Antigen retrieval has been used in testing but may not be necessary. Typical working dilutions for routine immunohistochemistry are 1: 100 to 1: 4000 depending on tissue and detection method. It is usual to use approximately a 10-fold increase for confocal microscopy i.e. a dilution range of 1: 100 to 1: 400. For western blotting a dilution range of 1: 1000 to 1: 8000 is recommended. Biosensis recommends optimal dilutions/concentrations should be determined by the end user.
Specificity:	This antibody has been shown to be specific for clathrin.
Cross-reactivity:	Rat
Form:	Lyophilised
Reconstitution:	Reconstitute in 100 µl of sterile water. Centrifuge to remove any insoluble material.
Storage:	After reconstitution keep aliquots at -20°C for a higher stability, and at 4°C with an appropriate antibacterial agent.
References:	1. Kirchhausen T, et al. Proc. Natl. Acad. Sci. U.S.A. 84:8805-8809(1987). 2. Ter Haar E, et al. Cell 95:563-573(1998).

FOR RESEARCH USE ONLY



Rabbit antibody to Clathrin (619-638): whole serum



Immunohistochemical staining (DAB) of paraffin embedded rat lung tissue using Rabbit antibody to Clathrin (619-638): whole serum (R-165-100) at a dilution of 1: 1000 incubated overnight. Secondary antibody was biotinylated goat anti-sheep (1: 3000) from Vector ABC. This is a low power image showing intense staining of non-ciliated bronchiolar cells (Clara cells) and lesser staining in alveolar type II cells.

biosensis

FOR RESEARCH USE ONLY