



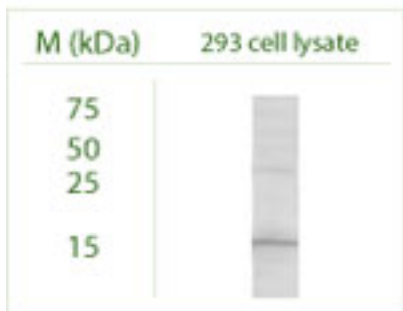
Rabbit antibody to GABARAP: whole serum

Catalogue No.:	R-143-100
Description:	GABARAP is highly positively charged in its N-terminus and shares sequence homology with MAP1LC3 1A and 1B. This protein clusters neurotransmitter receptors (GABA(A) receptors) by mediating interaction with the cytoskeleton. SUBUNIT: Interacts with GABRG2, TUBA1, ULK1 and NSF. Interacts with beta-tubulin and GPHN. SUBCELLULAR LOCATION: Intracytoplasmic membrane. Cytoskeleton. Largely associated with intracellular membrane structures including the Golgi apparatus and post-synaptic cisternae. Colocalizes with microtubules. TISSUE SPECIFICITY: Heart, brain, placenta, skeletal muscle, kidney and pancreas.
Batch No.:	See product label
Unit size:	100 µl
Antigen:	A synthetic peptide (FEKRRSEGEKIC) corresponding to the N-terminal of human GABARAP protein has been used as the immunogen. The sequence is homologous with mouse and rat form of GABARAP.
Other Names:	Gamma-aminobutyric acid receptor-associated protein; GABA(A) receptor-associated protein; MM46; GABARAP; FLC3B
Accession:	GBRAP_HUMAN GBRAP_MOUSE GBRAP_RAT
Produced in:	Rabbit
Purity:	Whole serum
Applications:	IHC, immunofluorescence, WB. A dilution of 1:200 to 1:1000 dilution is recommended for these applications. Biosensis recommends optimal dilutions/concentrations should be determined by the end user.
Specificity:	IHC, WB and ELISA confirmed the specificity for GABARAP.
Cross-reactivity:	Human, rat. Other species not yet tested.
Form:	Lyophilised
Reconstitution:	Reconstitute in 100 µl of sterile water. Centrifuge to remove any insoluble material.
Storage:	After reconstitution keep aliquots at -20°C for a higher stability, and at 4°C with an appropriate antibacterial agent. Glycerol (1:1) may be added for an additional stability. Avoid repetitive freeze/thaw cycles.
Expiry Date:	12 months after purchase
References:	1. Wang H. et al. Nature. 397: 69-72 (1999) 2. Okazaki N. et al. Brain Res. Mol. Brain Res. 85:1-12(2000) 3. Hu R.-M. et al. Proc. Natl. Acad. Sci. U.S.A. 97:9543-9548(2000) 4. Knight D. et al. Biol. Chem. 277:5556-5561(2002)

FOR RESEARCH USE ONLY



Rabbit antibody to GABARAP: whole serum



Western blot under reducing conditions on 293 cell lysate using Rabbit antibody to GABARAP: whole serum (R-143-100) at a dilution of 1:100.

biosensis

FOR RESEARCH USE ONLY