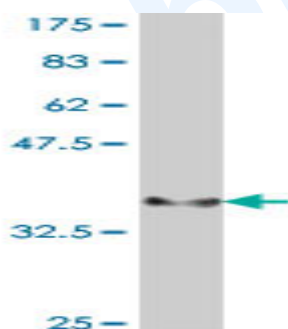


Mouse polyclonal antibody to human Notch 2: whole serum

Catalogue No.:	Mo-933-50
Description:	Notch 2 functions as a receptor for membrane-bound ligands Jagged1, Jagged2 and Delta1 to regulate cell-fate determination. Upon ligand activation through the released notch intracellular domain (NICD) it forms a transcriptional activator complex with RBP-J kappa and activates genes of the enhancer of split locus. Notch 2 is cleaved in the trans-Golgi network, and presented on the cell surface as a heterodimer. It is expressed in the brain, heart, kidney, lung, skeletal muscle and liver. Defects in Notch 2 are the cause of Alagille syndrome type 2 which is a multisystem disorder defined by hepatic bile duct paucity and cholestasis in association with cardiac, skeletal and ophthalmologic manifestations.
Batch No.:	See product label
Unit size:	50 µl
Antigen:	Partial recombinant human Notch 2 (26-136) with a GST tag.
Other Names:	Neurogenic locus notch homolog protein 2; hN2; NOTCH2
Accession:	NOTC2_HUMAN
Produced in:	Mouse
Purity:	Whole serum
Applications:	This antibody is recommended for WB and ELISA. Biosensis recommends optimal dilutions/concentrations should be determined by the end user.
Specificity:	Specificity has been confirmed by WB and direct ELISA against the antigen.
Cross-reactivity:	Human. Other species have not been tested.
Form:	Liquid. 50% glycerol
Storage:	Keep aliquots at -20°C for higher stability or at 4°C with an appropriate antibacterial agent. Avoid repetitive freeze/thaw cycles.
Expiry Date:	12 months after purchase



Western blot detection of GST tagged recombinant human Notch 2. Note the GST tag alone is 26 kDa.

FOR RESEARCH USE ONLY