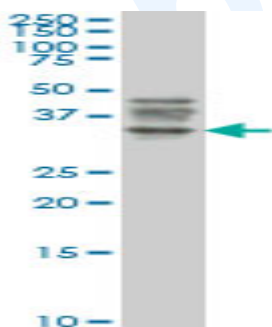


Mouse monoclonal antibody to human ATG3 [1F7]: IgG

Catalogue No.:	M-908-100
Description:	Autophagy is a process of bulk degradation of cytoplasmic components by the lysosome or vacuole. ATG3 is an E2-like protein-conjugating enzyme for GABARAPL1, GABARAPL2 and MAPLC3 binding them to PE. ATG3 forms an E1-E2 complex with ATG7 and cross-talks with the ATG12 conjugation system. ATG3 is a cytoplasmic protein that is widely expressed with highest expression in heart, skeletal muscle, kidney, liver and placenta.
Batch No.:	See product label
Unit size:	100 µg
Antigen:	Partial recombinant human ATG3 [1-100] with a GST tag.
Clone:	1F7
Other Names:	Autophagy-related protein 3; APG3-like; hApg3; Protein PC3-96; ATG3; APG3; APG3L
Accession:	ATG3_HUMAN
Produced in:	Mouse
Purity:	Protein G purified immunoglobulin
Applications:	This antibody is recommended for WB and sandwich ELISA. Biosensis recommends optimal dilutions/concentrations should be determined by the end user.
Specificity:	Specificity has been confirmed by WB and ELISA against the antigen.
Cross-reactivity:	Human. Other species have not been tested.
Form:	Lyophilised from PBS pH 7.2
Reconstitution:	Reconstitute in 100 µl of sterile water. Centrifuge to remove any insoluble material.
Storage:	After reconstitution keep aliquots at -20°C for higher stability or at 4°C with an appropriate antibacterial agent. Glycerol (1:1) may be added for additional stability. Avoid repetitive freeze/thaw cycles.
Expiry Date:	12 months after purchase



Western blot detection of ATG3 expression in Jurkat cell lysate.

FOR RESEARCH USE ONLY