



## Mouse monoclonal antibody to Ubiquitin C Terminal Hydrolase 1 [BH7]

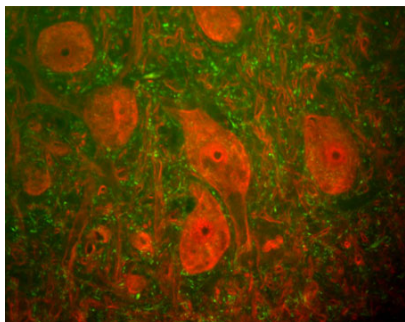
<b>Catalogue No.:</b>	M-1407-100
<b>Description:</b>	This enzyme is a thiol protease that recognizes and hydrolyzes a peptide bond at the C-terminal glycine of ubiquitin. The enzyme also binds to free monoubiquitin and may prevent its degradation in lysosomes (ref: SWISSPROT).
<b>Batch No.:</b>	See product label
<b>Unit size:</b>	100 µl
<b>Antigen:</b>	Recombinant full length human Ubiquitin C Terminal Hydrolase 1 (UCHL1) purified from E. coli.
<b>Antibody Type:</b>	Monoclonal
<b>Isotype:</b>	IgG1
<b>Clone:</b>	BH7
<b>Other Names:</b>	Ubiquitin carboxyl-terminal hydrolase isozyme L1; UCH-L1; Neuron cytoplasmic protein 9.5; PGP 9.5; PGP9.5; Ubiquitin thioesterase L1; UCHL1;
<b>Accession:</b>	P09936 UCHL1_HUMAN;
<b>Produced in:</b>	Mouse
<b>Applications:</b>	Western Blotting (WB), Immunocytochemistry (IC) and Immunohistochemistry (IH). A dilution of 1:20,000 is recommended for WB. A dilution of 1:500 - 1:2,000 is recommended for IC and IH. Biosensis recommends optimal dilutions/concentrations should be determined by the end user.
<b>Specificity:</b>	The specificity of this antibody has been confirmed by WB. This antibody detects ~24 kDa UCHL1 enzyme. Suitable control tissue is rat spinal cord, brain, SHSY-5Y or HEK293 cell extract.
<b>Antibody Against:</b>	Ubiquitin C Terminal Hydrolase 1
<b>Cross-reactivity:</b>	Hu, Rat, Bov
<b>Form:</b>	Lyophilised with 5% trehalose
<b>Appearance:</b>	White powder
<b>Reconstitution:</b>	Reconstitute in sterile distilled water. Centrifuge to remove any insoluble material.
<b>Storage:</b>	After reconstitution of lyophilised antibody, aliquot and store at -20°C for a higher stability. Avoid freeze-thaw cycles.
<b>Expiry Date:</b>	12 months after purchase

---

FOR RESEARCH USE ONLY



## Mouse monoclonal antibody to Ubiquitin C Terminal Hydrolase 1 [BH7]



An image showing a section of rat spinal cord stained with Mouse monoclonal antibody to Ubiquitin C Terminal Hydrolase 1 [BH7] M-1407-100 (red) and Rabbit polyclonal antibody to neurofilament H R-1388-50 (green). The large cells are  $\alpha$ -motoneurons and Ubiquitin C Terminal Hydrolase 1 (UCHL1) fills the cytoplasm of their perikarya and dendrites. The neurofilament NF-H antibody binds primarily to phosphorylated axonal forms of NF-H, and so stains axons coursing between the large motor neurons.

biosensis

---

FOR RESEARCH USE ONLY