

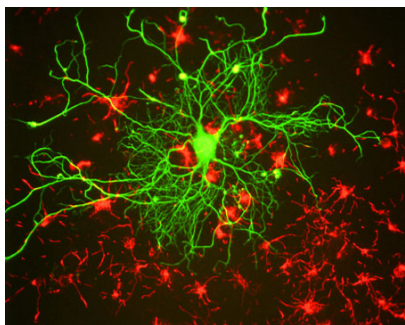


Mouse monoclonal antibody to Neurofilament Light [DA2]

| | |
|-----------------------------|--|
| Catalogue No.: | M-1391-50 |
| Description: | Neurofilaments are composed of three intermediate filament proteins: light (~68 kDa), medium (~160 kDa) and heavy (~200 kDa), which are involved in the maintenance of the neuronal caliber. Neurofilament light (NF68 or NF-L) is the most abundant of the three proteins. |
| Batch No.: | See product label |
| Unit size: | 50 µl |
| Antigen: | A preparation of enzymatically dephosphorylated pig neurofilaments including NF-L, NF-M and NF-H. Screening was by ELISA on the immungen followed by immunofluorescence microscopy. The epitope for this antibody is not in the N-terminus but its exact location is not known. It is thought to be somewhere within the central alpha helical "rod" region of the molecule. |
| Antibody Type: | Monoclonal |
| Isotype: | IgG1 |
| Clone: | DA2 |
| Other Names: | NF-L; NF68; NEFL; Neurofilament light polypeptide; NFL; |
| Accession: | P02547 NFL_PIG; P07196 NFL_HUMAN; |
| Produced in: | Mouse |
| Applications: | Western Blotting (WB), Immunocytochemistry (IC) and Immunohistochemistry (IH). A dilution of 1:10,000 - 1:20,000 is recommended for WB. A dilution of 1:100 - 1:500 is recommended for IC and IH. Biosensis recommends optimal dilutions/concentrations should be determined by the end user. |
| Specificity: | Specifically recognizes the light neurofilament subunit NF-L (~68 kDa) in WB. |
| Antibody Against: | Neurofilament Light |
| Cross-reactivity: | Hu, Rat, Ms, Fel, Bov, Por, Chk |
| Form: | Lyophilised with 5% trehalose |
| Appearance: | White powder |
| Reconstitution: | Reconstitute in sterile distilled water. Centrifuge to remove any insoluble material. |
| Storage: | After reconstitution of lyophilised antibody, aliquot and store at -20°C for a higher stability. Avoid freeze-thaw cycles. |
| Expiry Date: | 12 months after purchase |
| Specific References: | 1. Felitsyn N. et al (2008) The heme precursor delta-aminolevulinate blocks peripheral myelin formation. J Neurochem. 2008 Sep;106(5):2068-79. |

FOR RESEARCH USE ONLY

Mouse monoclonal antibody to Neurofilament Light [DA2]



Cells grown from adult rat brain. The large cell in the middle is stained with Mouse monoclonal antibody to Neurofilament Light [DA2] M-1391-50 (green). Another type of neuronal lineage cell was stained with Rabbit polyclonal to alpha-internexin R-1379-50 (red). These cells were mitotic but had several characteristics of neurons.

biosensis

FOR RESEARCH USE ONLY