

Data Sheet

Caspase-8

Human, recombinant, C-terminal His-tag
 Catalog #: 80114
 Lot #: 130215-2 Conc.: 0.37 mg/ml

Formulated in: 40 mM Tris-HCl, pH 8.0,
 110 mM NaCl, 2.2 mM KCl, 200 mM
 imidazole, 3 mM DTT and 20% glycerol.

Stability: >6 months at -80 °C

References:

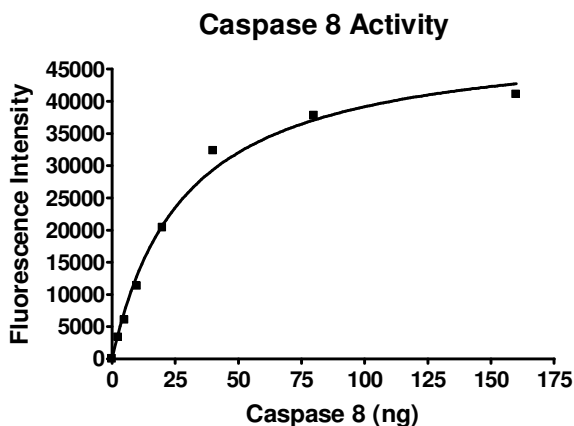
1. MacPherson, G., *et al.*, *J. Natl. Cancer Inst.* 2004 Dec 15; **96(24)**:1866-9.
2. Sun, T., *et al.*, *Nat Genet.* 2007 May; **39(5)**:605-13.
3. Hoffman, J.C., *et al.* *Mol. Cell. Biol.* 2009 Aug; **29(16)**: 4431-4440.

Description: Human Caspase 8 (CASP8), GenBank Accession No. NM_001228), amino-acids 200 - 496 (end), with C-terminal His-tag, MW=34.5 kDa, expressed in an *E. coli* cell expression system. Procaspase-8 is autocleaved between the prodomain and large protease subunit (p18). The cleavage product, p30, contains both the large (p18) and small (p10 [His-tag]) protease subunits. p30 is further processed to the p18 and p10 subunits, which dimerize to form active enzyme.

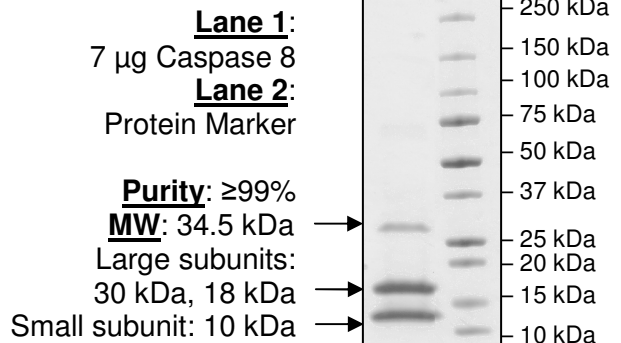
Specific Activity: 1,145 pmol/min/μg.
 Assay conditions: 50 mM HEPES, pH 7.2, 50 mM NaCl, 10 mM EDTA, 0.1% Chaps, 5% glycerol, 10 mM DTT, and 20 μM Caspase 8 substrate. Incubate for 30 minutes at room temperature. Fluorescence intensity is measured at exc380/em505 nm.

Application:
 Useful for the study of enzyme kinetics, screening inhibitors, and selectivity profiling.

Quality Assurance



**4-20% SDS-PAGE
 Coomassie staining**



OUR PRODUCTS ARE FOR RESEARCH USE ONLY. NOT FOR DIAGNOSTIC OR THERAPEUTIC USE.

To place your order, please contact us by Phone **1.858.829.3082** Fax **1.858.481.8694**
 Or you can Email us at: info@bpsbioscience.com
 Please visit our website at: www.bpsbioscience.com



6044 Cornerstone Court West, Suite E
San Diego, CA 92121
Tel: 1.858.829.3082
Fax: 1.858.481.8694
Email: info@bpsbioscience.com

Sequence:

MNKSLLKIINDYEEFSKGEELCGVMTISDSPREQDSESQTLDKVYQMKS KPRGYCLIIN
NHNFAKAREKVPKLHSIRDRNGTHLDAGALTTTFFELHFEIKPHDDCTVEQIYEILKIYQ
LMDHSNMDCFICCILSHGDKGIIYGTGQEAPIYELTSQFTGLKCPSLAGKPKVFFIQA
CQGDNYQKGIPVETDSEEQPYLEMDLSSPQTRYIPDEADFLGMATVNNCVSYRNPA
EGTWYIQSLCQSLRERCPRGDDILTILTEVNYEVS NKDDKKNMGKQMPQPTFTLRKK
LVFPSDHHHHHH

OUR PRODUCTS ARE FOR RESEARCH USE ONLY. NOT FOR DIAGNOSTIC OR THERAPEUTIC USE.

To place your order, please contact us by Phone **1.858.829.3082** Fax **1.858.481.8694**
Or you can Email us at: info@bpsbioscience.com
Please visit our website at: www.bpsbioscience.com