

Data Sheet

CHD2

Human, recombinant, N-terminal GST-tag
Catalog #: 55005
Lot #: 121029-G1 Conc.: 0.51 mg/ml

Formulated in: 40 mM Tris-HCl, pH 8.0, 110 mM NaCl, 2.2 mM KCl, and 20% glycerol.

Stability: >6 months at -80°C

References:

1. Woodage, T., *et al.*, *Proc Natl Acad Sci USA*. 1997 Oct 14;**94(21)**:11472-7.
2. Harada, A., *et al.*, *EMBO J*. 2012 May 8;**31(13)**:2994-3007.

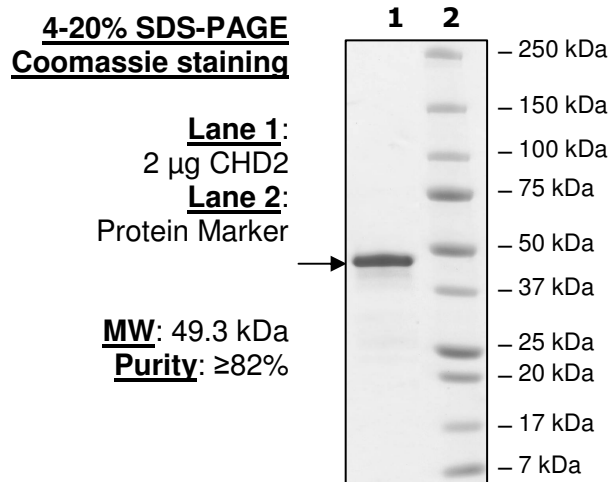
Description:

Human chromodomain helicase DNA binding protein 2, or CHD2, (GenBank Accession No. NM_001271) a.a. 260-456(end), with N-terminal GST-tag, MW=49.3 kDa, expressed in an *E. coli* cell expression system.

Application:

Useful for protein binding assays, screening inhibitors, and selectivity profiling.

Quality Assurance



OUR PRODUCTS ARE FOR RESEARCH USE ONLY. NOT FOR DIAGNOSTIC OR THERAPEUTIC USE.

To place your order, please contact us by Phone **1.858.829.3082** Fax **1.858.481.8694**
Or you can Email us at: info@bpsbioscience.com
Please visit our website at: www.bpsbioscience.com



6044 Cornerstone Court W, Ste E
San Diego, CA 92121
Tel: 1.858.829.3082
Fax: 1.858.481.8694
Email: info@bpsbioscience.com

Sequence:

MSPILGYWKIKGLVQPTRLLEYLEEKYEEHLYERDEGDKWRNKKFELGLEFPNLPYYI
DGDVKLTQSMARIYIADKHNMLGGCPKERAIEISMLEGAVLDIRYGVSRAYSDFETLK
VDFLSKLPEMLKMFEDRLCHKTYLNGDHVTHPDFMLYDALDVVLYMDPMCLDAFPKLV
CFKKRIEAIQIDKYLKSSKYIAWPLQGQWQATFGGGDHPPKSDLEVLFGGPLGSETIE
KVLDSRLGKKGATGASTTVYAIEANGDPSGDFDTEKDEGEIQYLIKWKGWSYIHSTW
ESEESLQQQKVKGLKKLENFKKKEDEIKQWLGKVSPEDVEYFNCQQELASELNKQY
QIVERVIAVKTSKSTLGQTDPAHSRKPAPSNEPEYLCKWMGLPYSECSWEDEALIG
KKFQNCIDSFHSRNNSKTIPTR

OUR PRODUCTS ARE FOR RESEARCH USE ONLY. NOT FOR DIAGNOSTIC OR THERAPEUTIC USE.

To place your order, please contact us by Phone **1.858.829.3082** Fax **1.858.481.8694**
Or you can Email us at: info@bpsbioscience.com
Please visit our website at: www.bpsbioscience.com