

Data Sheet

FBXL11(KDM2A)

Human recombinant, with C-terminal FLAG-tag

Catalog #: 50102

Lot #: 120910-G

Conc: 0.09 mg/ml

Formulated in: 40 mM Tris-HCl, pH 8.0, 110 mM NaCl, 2.2 mM KCl, 80 ng/μl Flag peptide, 20% Glycerol.

Stability: >6 months at -80 °C

References:

1. Tanaka, Y., *et al.* (2010). *EMBO J.* **29(9)**:1510-22.
2. Blackledge, N.P., *et al.* (2010). *Mol. Cell.* **38(2)**:179-90.
3. Frescas, D., *et al.* (2008). *Cell Cycle* **7(22)**:3539-47.

Description:

Human F-Box Protein 11 (FBXL11, also known as KDM2A, Ndy2, and JHDM1A), GenBank Accession # NM_012308), full length [a.a. 1-1162(end)] with C-terminal FLAG-tag, MW= 134 kDa, expressed in Sf9 cells via a baculovirus expression system.

Application:

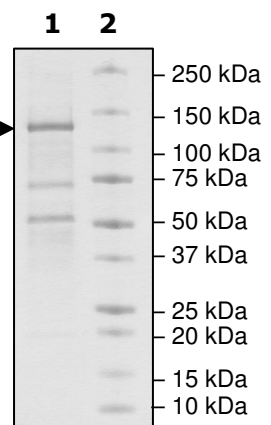
Useful for the study of enzyme kinetics, screening inhibitors, and selectivity profiling.

Quality Assurance

4-20% SDS-PAGE Coomassie staining

Lane 1:
1.8 μg FBXL11
Lane 2:
Protein Marker

MW: 134 kDa
Purity: ≥45%



OUR PRODUCTS ARE FOR RESEARCH USE ONLY. NOT FOR DIAGNOSTIC OR THERAPEUTIC USE.

To place your order, please contact us by Phone **1.858.829.3082** Fax **1.858.481.8694**

Or you can Email us at: info@bpsbioscience.com

Please visit our website at: www.bpsbioscience.com