



11526 Sorrento Valley Rd SteA2
San Diego Ca 92121
Tel: 1.858.202.1401
1.858.829.3082
Fax: 1.858.259.5734
Email: info@bpsbioscience.com

Data Sheet

EPHB2

human, recombinant, N-terminal HIS tag
Catalog #: 40200

Formulated in: 50mM Tris-HCl, pH 7.5,
150mM NaCl, 0.25mM DTT, 0.1mM EGTA,
0.1mM EDTA, 0.1mM PMSF, 50% glycerol
and 3mM DTT.

Stability: >12 months at -80°C

References:

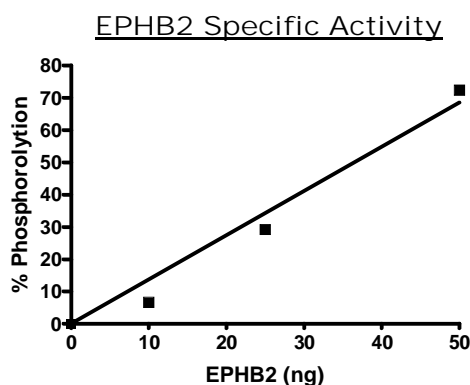
1. Macrae, M., et al., Cancer Cell 8 (2), 111-118 (2005).
2. Xu, H., et al., Am. J. Physiol. Renal Physiol. 288 (4), F855-F866 (2005).

Description: Human EPHB2 (GenBank Accession No. NM_004442), (a.a. 569-end) with N-terminal His tag, MW=52 kDa, expressed in a Baculovirus infected Sf9 cell expression system.

Specific Activity: 21.8 pmol/min/μg. Enzyme reaction is conducted in a buffer containing 50 mM HEPES (pH7.5), 10 mM MgCl₂, 1 mM EGTA, 200 μM ATP, 0.01% Brij-35 and 2 μM substrate (Invitrogen Z-Lyte Peptide 1) at room temperature for 1 hour.

Application: Useful for the study of enzyme kinetics, screening inhibitors, and selectivity profiling.

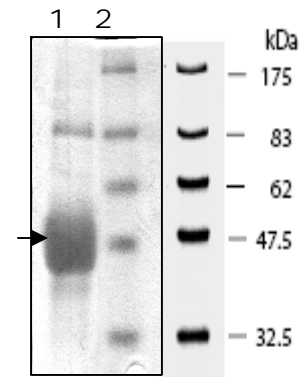
Quality Assurance



10% SDS-PAGE
Coomassie staining

Lane 1:
4 μg EPHB2
Lane 2:
Protein Marker
BioLabs (#P7708L)

MW: 52 kDa.
Purity: >80%



OUR PRODUCTS ARE FOR RESEARCH USE ONLY. NOT FOR DIAGNOSTIC OR THERAPEUTIC USE.

To place your order, please contact us by Phone **1.858.202.1401** or **1.858.829.3082**, Fax **1.858.259.5734**

Or you can Email us at: info@bpsbioscience.com

Please visit our website at: www.bpsbioscience.com