



11526 Sorrento Valley Rd SteA2
San Diego Ca 92121
Tel: 1.858.202.1401
1.858.829.3082
Fax: 1.858.259.5734
Email: info@bpsbioscience.com

Data Sheet

EPHA2

human, recombinant, N-terminal HIS tag
Catalog #: 40190

Formulated in: 50mM Tris-HCl, pH 7.5,
150mM NaCl, 0.25mM DTT, 0.1mM EGTA,
0.1mM EDTA, 0.1mM PMSF, 50% glycerol
and 3mM DTT.

Stability: >12 months at -80°C

References:

1. Nakada, M., et al., Cancer Res. 64 (9), 3179-3185 (2004).
2. Kataoka, H., et al., J. Cancer Res. Clin. Oncol. 128 (7), 343-348 (2002).

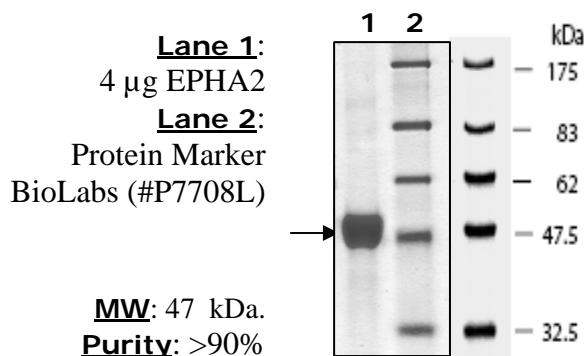
Description: Human EPHA2 (GenBank Accession No. NM_004431), (a.a. 596-end) with N-terminal His tag, MW=47 kDa, expressed in a Baculovirus infected Sf9 cell expression system

Specific Activity: 170 U/mg. One unit is defined as the amount of enzyme that will phosphorylate 1 nmol of tyrosine substrate per minute at pH 7.4 and 30°C. Assay buffer: 50 mM HEPES, pH 7.4, 3 mM MgCl₂, 3 mM MnCl₂, 1 mM DTT, 3 μM Na-orthovanadate, 0.1 mM ATP, 30 μg/ml Poly (Glu:Tyr) 4:1 substrate, and 0.1 μg /ml recombinant EPHA2.

Application: Useful for the study of enzyme kinetics, screening inhibitors, and selectivity profiling.

Quality Assurance

**10% SDS-PAGE
Coomassie staining**



OUR PRODUCTS ARE FOR RESEARCH USE ONLY. NOT FOR DIAGNOSTIC OR THERAPEUTIC USE.

To place your order, please contact us by Phone **1.858.202.1401** or **1.858.829.3082**, Fax **1.858.259.5734**
Or you can Email us at: info@bpsbioscience.com
Please visit our website at: www.bpsbioscience.com