



11526 Sorrento Valley Rd SteA2
San Diego Ca 92121
Tel: 1.858.202.1401
1.858.829.3082
Fax: 1.858.259.5734
Email: info@bpsbioscience.com

Data Sheet

PKC λ

Human, recombinant, N-terminal GST tag
Catalog #: 40015

Formulated in: 25 mM Tris-HCl, pH 8.0,
100 mM NaCl, 0.05% Tween-20, 3mM DTT
and 50% glycerol.

Stability: >6 months at -80°C

References:

1. Zhang, J. et al., J. Biol. Chem. 279, 22118-22123 (2004).
2. Gustrafson, W.C. et al., J. Biol. Chem. 279, 9400-9408 (2004).

Description:

Human PKC λ (lamda) (GenBank Accession No. NM_002740), (a.a. 2- 587) with N-terminal GST tag, expressed in a Baculovirus infected Sf9 cell expression system. MW= 93 kDa.

Specific Activity: 35 U/ug. One unit is defined as the amount of enzyme that will phosphorylate 1 pmol of Ser/Thr 7 peptide substrate per minute at pH 7.4 and 30°C .

Application:

Useful for the study of enzyme kinetics, screening inhibitors, and selectivity profiling.

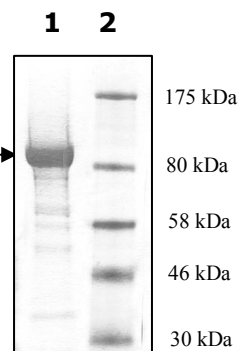
Quality Assurance

**10% SDS-PAGE
Coomassie staining**

Lane 1:
6 μg PKC λ

Lane 2:
Protein Marker
BioLabs (#P7708L)

Purity: >65%



OUR PRODUCTS ARE FOR RESEARCH USE ONLY. NOT FOR DIAGNOSTIC OR THERAPEUTIC USE.

To place your order, please contact us by Phone **1.858.202.1401** or **1.858.829.3082**, Fax **1.858.259.5734**

Or you can Email us at: info@bpsbioscience.com

Please visit our website at: www.bpsbioscience.com