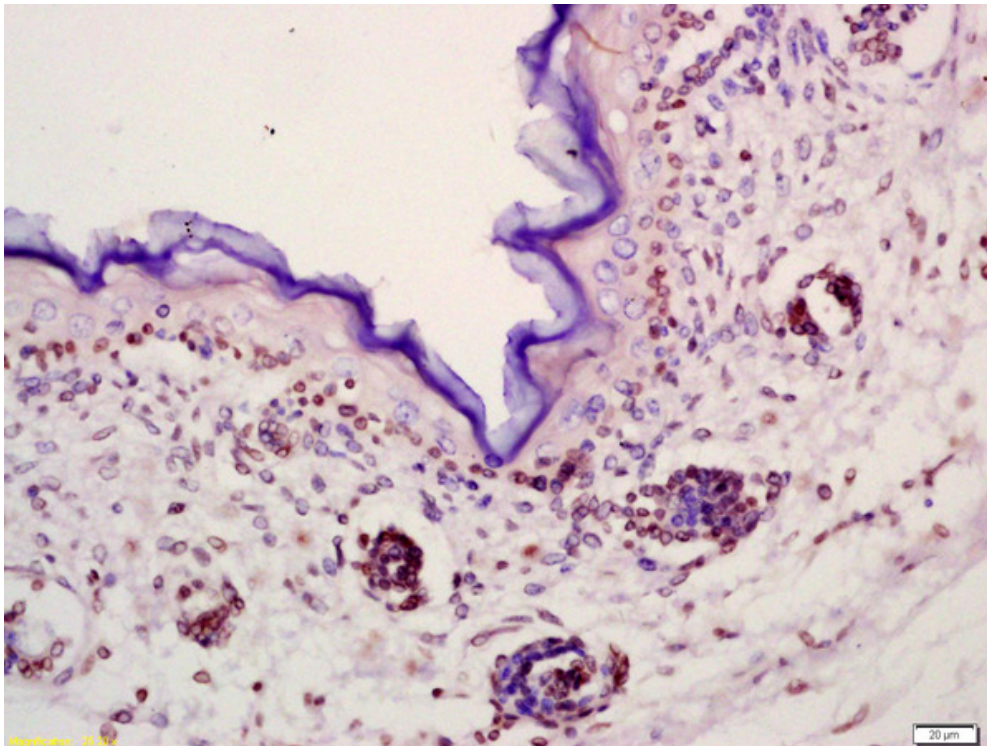
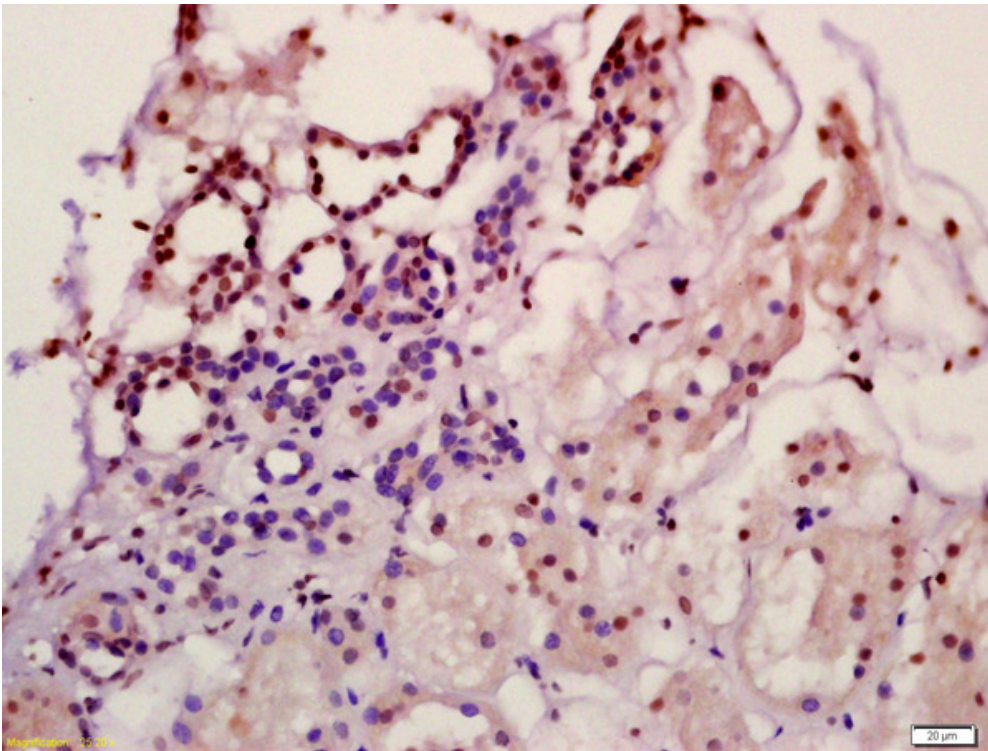


**Rabbit Anti-FGF23 Polyclonal Antibody, Cy5 Conjugated****D A T A S H E E T****Host:** Rabbit**Target Protein:** FGF23**Immunogen:** 25-75/251**Range:****Clonality:** Polyclonal**Isotype:** IgG**Entrez Gene:** [8074](#)**Swiss Prot:** [Q9GZV9](#)**Source:** KLH conjugated synthetic peptide derived from human FGF23**Purification:** Purified by Protein A.**Storage:** Aqueous buffered solution containing 100ug/ml BSA, 50% glycerol and 0.09% sodium azide. Store at 4°C for 12 months.**Background:** Regulator of phosphate homeostasis. Inhibits renal tubular phosphate transport by reducing SLC34A1 levels. Upregulates EGR1 expression in the presence of KL (By similarity). Acts directly on the parathyroid to decrease PTH secretion (By similarity). Regulator of vitamin-D metabolism. Negatively regulates osteoblast differentiation and matrix mineralization.**Conjugation:** Cy5**Excitation/ Emission:** 625,650nm/670nm**Size:** 100ul**Concentration:** 1ug/ul**Applications:** FCM(1:20-100)  
IF(IHC-P)(1:50-200)**Cross Reactive Species:** Human  
Mouse  
Rat

Caution: For research use only. Not for human or animal therapeutic or diagnostic use.

**V A L I D A T I O N**  
**I M A G E S**

Formalin-fixed and paraffin embedded mouse embryo labeled with Anti-FGF23 Polyclonal Antibody, Unconjugated (bs-5768R) at 1:200 followed by conjugation to the secondary antibody and DAB staining



Formalin-fixed and paraffin embedded human kidney labeled with Anti-FGF23 Polyclonal Antibody, Unconjugated (bs-5768R) at 1:200 followed by conjugation to the secondary antibody and DAB staining