

## bs-5768R-A350

### • Rabbit Anti-FGF23 Polyclonal Antibody, Alexa Fluor 350 conjugated

Conjugated Primary Antibodies

#### Background:

Regulator of phosphate homeostasis. Inhibits renal tubular phosphate transport by reducing SLC34A1 levels. Upregulates EGR1 expression in the presence of KL (By similarity). Acts directly on the parathyroid to decrease PTH secretion (By similarity). Regulator of vitamin-D metabolism. Negatively regulates osteoblast differentiation and matrix mineralization.

**Purification:** Was purified by Protein A and peptide affinity chromatography.

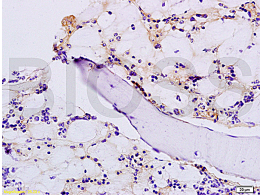
#### Storage:

Prepared as lyophilized powder or liquid and shipped on ice. Store at -20°C for one year. Protect from light.

#### Reconstitution:

If the antibody is in liquid form, it is ready to use, no reconstitution needed.

Reconstitution is only required for the lyophilized antibody. Reconstitution instruction: Two additional vials are included in shipment for reconstitution purposes (double distilled H<sub>2</sub>O and sterile glycerol). Centrifuge all vials to ensure necessary quantities have settled. Add 50uL of sterile double distilled water to antibody. Mix thoroughly by gently pipetting up and down. Then, add 50uL of sterile glycerol to antibody. Mix well and keep cold.



For full size images and description please click [HERE](#).

**Size:** 100ul or 100ug lyophilized

**Concentration:** 1ug/uL

**Preservatives:** 10ug/uL BSA and 0.1% Na<sub>3</sub>

#### Application:

- IF(1:100-500)
- Not yet tested in other applications. Optimal working dilutions must be determined by the end user.

#### Cross-reactivities:

Human, Mouse, Rat, Dog, Pig, Cow, Horse, Rabbit, Sheep, Guinea Pig,

**Molecular Weight:** 27kDa

**Isotype:** IgG

For research use only. CAUTION: Not for human or animal therapeutic or diagnostic use.