

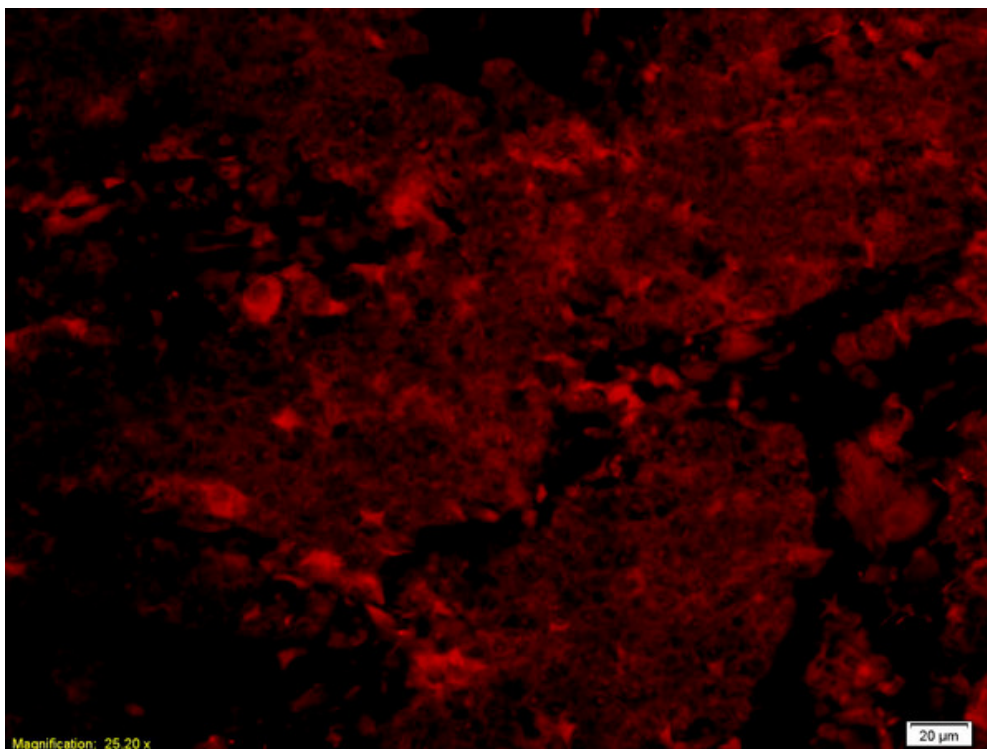
Rabbit Anti-NFKBIA(Ser32/36) Polyclonal Antibody, Cy7 Conjugated

— D A T A S H E E T —

Host: Rabbit**Target Protein:** NFKBIA Ser32/36**Modification:** Ser32/36**Site:****Clonality:** Polyclonal**Isotype:** IgG**Entrez Gene:** [4792](#)**Swiss Prot:****Source:** KLH conjugated synthetic phosphopeptide derived from human IKB alpha around the phosphorylation site of Ser32/36**Purification:** Purified by Protein A.**Storage:** Aqueous buffered solution containing 100ug/ml BSA, 50% glycerol and 0.09% sodium azide. Store at 4 °C for 12 months.**Background:** This gene encodes a member of the NF-kappa-B inhibitor family, which contain multiple ankrin repeat domains. The encoded protein interacts with REL dimers to inhibit NF-kappa-B/REL complexes which are involved in inflammatory responses. The encoded protein moves between the cytoplasm and the nucleus via a nuclear localization signal and CRM1-mediated nuclear export. Mutations in this gene have been found in ectodermal dysplasia anhidrotic with T-cell immunodeficiency autosomal dominant disease. [provided by RefSeq, Aug 2011].**Conjugation:** Cy7**Excitation/** 743nm/767nm**Emission:****Size:** 100ul**Concentration:** 1ug/ul**Applications:** IF(IHC-P)(1:50-200)**Cross Reactive** Human**Species:** Mouse

Rat

Caution: For research use only. Not for human or animal therapeutic or diagnostic use.

— V A L I D A T I O N —
I M A G E S

Magnification: 25.20 x
 Formalin-fixed and paraffin embedded human lung carcinoma labeled with Anti-phospho-NFKBIA(Ser32/36) Polyclonal Antibody, PE Conjugated (bs-2513R-PE) at 1:200