

bs-2513R-Cy5.5

[Conjugated Primary Antibody]

Bioss
ANTIBODIES

www.biossusa.com
support@biossusa.com
800.501.7654 [DOMESTIC]
+1.781.569.5821 [INTERNATIONAL]

Rabbit Anti-NFKBIA(Ser32/36) Polyclonal Antibody, Cy5.5 Conjugated

D A T A S H E E T

Host: Rabbit

Target Protein: NFKBIA Ser32/36

Modification: Ser32/36

Site:

Clonality: Polyclonal

Isotype: IgG

Entrez Gene: [4792](#)

Swiss Prot:

Source: KLH conjugated synthetic phosphopeptide derived from human IKB alpha around the phosphorylation site of Ser32/36

Purification: Purified by Protein A.

Storage: Aqueous buffered solution containing 100ug/ml BSA, 50% glycerol and 0.09% sodium azide. Store at 4 °C for 12 months.

Background: This gene encodes a member of the NF-kappa-B inhibitor family, which contain multiple ankrin repeat domains. The encoded protein interacts with REL dimers to inhibit NF-kappa-B/REL complexes which are involved in inflammatory responses. The encoded protein moves between the cytoplasm and the nucleus via a nuclear localization signal and CRM1-mediated nuclear export. Mutations in this gene have been found in ectodermal dysplasia anhidrotic with T-cell immunodeficiency autosomal dominant disease. [provided by RefSeq, Aug 2011].

Conjugation: Cy5.5

Excitation/ Emission: 675nm/694nm

Size: 100ul

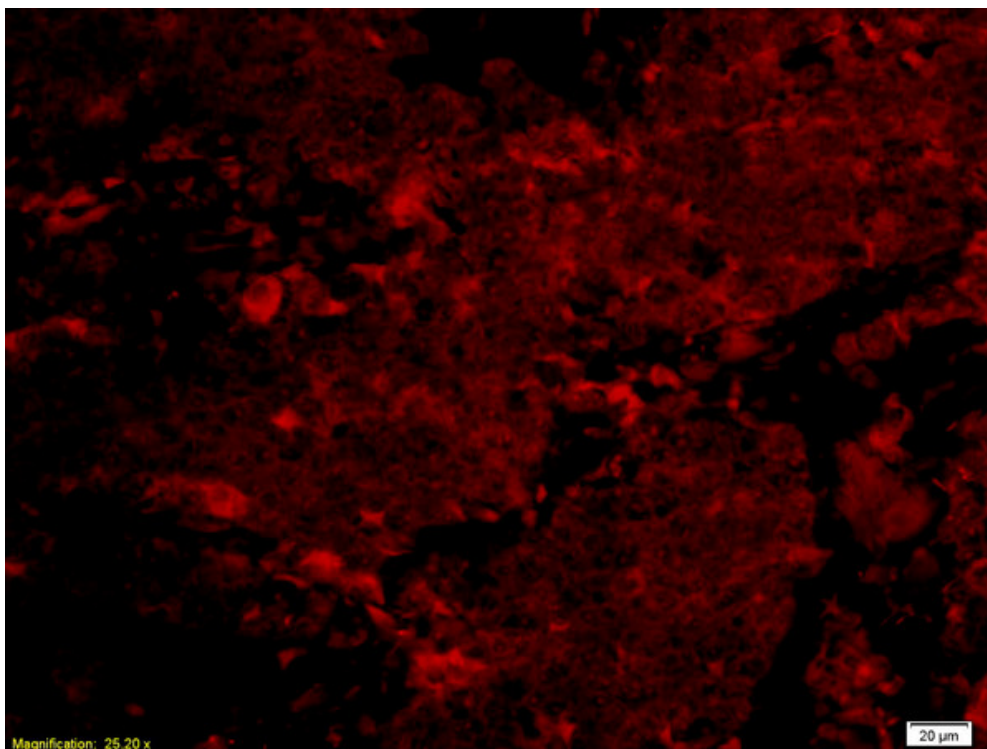
Concentration: 1ug/ul

Applications: IF(IHC-P)(1:50-200)

Cross Reactive Species: Human
Mouse
Rat

Caution: For research use only. Not for human or animal therapeutic or diagnostic use.

V A L I D A T I O N
I M A G E S



Formalin-fixed and paraffin embedded human lung carcinoma labeled with Anti-phospho-NFKBIA(Ser32/36) Polyclonal Antibody, PE Conjugated (bs-2513R-PE) at 1:200