

# ReliaBLOT<sup>®</sup> Pre-stained Protein Marker



**Catalog No.**  
WB103-600

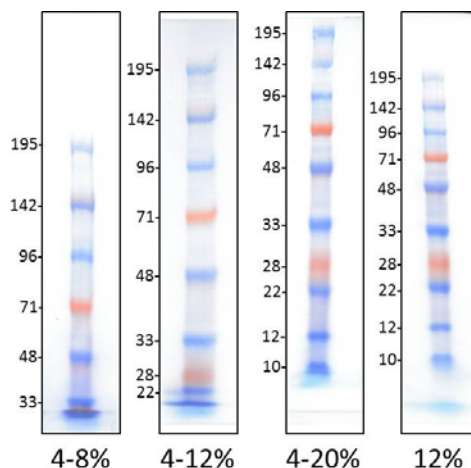
**Description:** Bethyl Laboratories ReliaBLOT<sup>®</sup> Pre-stained Protein Marker is a mixture of 10 recombinant proteins with apparent molecular weights ranging from 10 to 195 kDa. The proteins are coupled to a dye for easy visualization.

**Amount:** 0.6 ml

**Application:** The ReliaBLOT<sup>®</sup> Pre-stained Protein Marker is ready to load and does not require dilution, the addition of reducing agent, or heating. If frozen, thaw the marker at room temperature and gently mix to ensure homogeneity. Load 5-8 mcl per well on 12-well mini-gels.

Note: The mobility and apparent molecular weights of pre-stained proteins can vary in different SDS-PAGE buffer systems.

The average apparent molecular weights (kDa) for the ReliaBLOT<sup>®</sup> Pre-stained Protein Markers in the ReliaBLOT<sup>®</sup> SDS-PAGE (Tris-Glycine) system are shown. 8  $\mu$ l of ReliaBLOT<sup>®</sup> Pre-stained Protein Marker was loaded on the indicated ReliaBLOT<sup>®</sup> SDS gel, electrophoresed for 1 hour at 150 volts, and transferred to nitrocellulose for 2 hours at 20 volts.



**Storage:** For long term storage, aliquot and store at -20° C.  
For short term (3 months) storage, product may be stored at 2-8° C.

**Stability:** At 2-8° C, the product is stable for up to 3 months. ReliaBLOT<sup>®</sup> Pre-stained Protein Marker is stable for up to 1 year when stored at -20° C.

**Expiration Date:** See lot specific data sheet.

# ReliaBLOT<sup>®</sup> Pre-stained Protein Marker



**Catalog No.**  
WB103-600

---

## MATERIAL SAFETY DATA SHEET

### Contents Description

ReliaBLOT<sup>®</sup> Pre-stained Protein Marker contains 0.0625 M Tris-HCl, pH6.8, 1% SDS, 1mM DTT, and 20% glycerol.

### Hazardous Ingredients

Glycerol has target organ effects to the kidney, and causes mild skin and eye irritation. May be harmful if inhaled, absorbed through skin, or ingested. Avoid inhalation of vapor or mist, and contact with skin and eyes.

SDS is an irritant. SDS can cause skin, and eye irritation, and may cause respiratory irritation. May be harmful if absorbed through skin or ingested.

Tris-HCL may cause respiratory tract, skin, and eye irritation. It may be harmful if swallowed.

### Disposal Guidelines

Observe all Federal, State and Local laws concerning health and pollution.

The above information is believed to be correct but does not purport to be all-inclusive and is intended to be used only as a guide. Bethyl Laboratories, Inc. shall not be liable or responsible in any way for use of either this information or the material supplied. Disposal of hazardous material may be subject to federal, state, or local laws or regulations.