

PPP1CA IHC Antibody

Rabbit Polyclonal

Antigen Affinity Purified

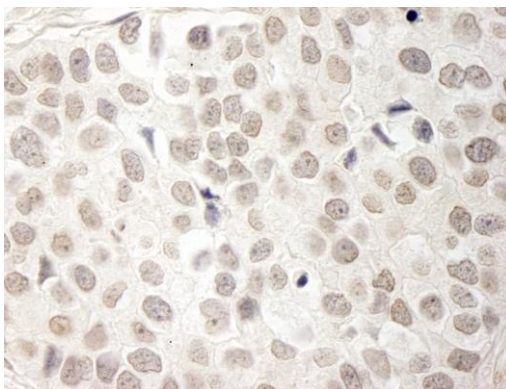
Catalog No. IHC-00483

Protein ID NP_002699.1

Gene ID 5499



APPLICATIONS	IHC-P, IF
REACTIVITY TESTED	Human. Other species have not been tested.
PRESUMED REACTIVITY	Based on 100% sequence identity, this antibody is predicted to react with Rat, Bovine, Dog, Horse, Rabbit, Guinea pig_10141, Pig, Panda, Orangutan, Rhesus Monkey, Gorilla, Chimpanzee, Tasmanian devil, African elephant, Chinese hamster and Gray short-tailed opossum.
ISOTYPE	IgG
AMOUNT	0.1 ml
STORAGE/SHELF LIFE	2 - 8° C / 1 year from date of receipt
PHYSICAL STATE	Liquid
BUFFER	Tris-buffered Saline containing 0.1% BSA containing 0.09% Sodium Azide
ORIGIN	USA
PRODUCTION PROCEDURES	<p>Antibody was affinity purified using an epitope specific to PPP1CA immobilized on solid support.</p> <p>The epitope recognized by IHC-00483 maps to a region between residue 280 and the C-terminus (residue 330) of human Protein Phosphatase 1, Catalytic Subunit, Alpha Isoform using the numbering given in entry NP_002699.1 (GeneID 5499).</p> <p>Immunoglobulin concentration was determined by extinction coefficient: absorbance at 280 nm of 1.4 equals 1.0 mg of IgG.</p>
APPLICATIONS	<p>Centrifuge tube to remove product from lid. Optimal working dilutions should be determined experimentally by the investigator. Prepare working dilution immediately before use.</p> <p>Immunohistochemistry 1:100 - 1:500</p> <p>Immunofluorescence 1:50 - 1:500</p>
APPLICATION NOTES	<p>Epitope exposure is recommended.</p> <p>Epitope exposure with tris-EDTA pH9.0 buffer will enhance staining.</p> <p>Likely to work with frozen sections.</p> <p>In some cases, the antibody may be diluted further than indicated.</p>
IHC HUMAN CONTROLS	Breast Carcinoma, Ovarian Carcinoma, Testicular Seminoma
ADDITIONAL INFO	<p>http://www.bethyl.com/product/IHC-00483</p> <p>Use the link above to view a current list of citations and other product specific information.</p>



Detection of Human PPP1CA by Immunohistochemistry.

Sample: FFPE section of human breast carcinoma. *Antibody:* Affinity purified rabbit anti-PPP1CA (Cat. No. IHC-00483) used at a dilution of 1:250. *Detection:* DAB staining using Immunohistochemistry Accessory Kit (Cat. No. IHC-101). Epitope Retrieval Buffer-High pH (IHC-101J) was substituted for Epitope Retrieval Buffer-Reduced pH.

MATERIAL SAFETY DATA SHEET

CONTENTS This product contains Rabbit immunoglobulin G (IgG) protein in Tris-buffered Saline containing 0.1% BSA containing 0.09% Sodium Azide.

INGREDIENT DESCRIPTIONS **NON-HAZARDOUS:**

Bovine Serum Albumin (BSA) – This product was derived from animals free of infectious or contagious diseases of U.S. Origin. No known toxicity for this biological material.

HAZARDOUS:

Sodium Azide (NaN3): Azide forms explosive chemical compounds with lead and copper plumbing. Care must be taken to wash waste down drains with large volumes of water. LD50 oral mouse 27 mg/kg. Wash all affected areas with large volumes of water and if swallowed consult your physician immediately.