

Phospho EZH2 (S21) IHC Antibody

Rabbit Polyclonal

Antigen Affinity Purified

Catalog No. IHC-00388

Protein ID NP_004447.2

Gene ID 2146



APPLICATIONS IHC-P, IF

REACTIVITY TESTED Human and mouse. Other species have not been tested.

ISOTYPE IgG

AMOUNT 0.1 ml

STORAGE/SHELF LIFE 2 - 8° C / 1 year from date of receipt

PHYSICAL STATE Liquid

BUFFER Tris-buffered Saline containing 0.1% BSA containing 0.09% Sodium Azide

ORIGIN USA

PRODUCTION PROCEDURES Antibody was affinity purified using an epitope specific to EZH2 phosphorylated in Serine 21 immobilized on solid support.

The epitope recognized by IHC-00388 maps to phosphorylated Serine 21 and surrounding residues of human Enhancer of Zeste homolog 2 using the numbering given in entry NP_004447.2 (GeneID 2146).

Antibody concentration was determined by extinction coefficient: absorbance at 280 nm of 1.4 equals 1.0 mg of IgG.

APPLICATIONS Centrifuge tube to remove product from lid. Optimal working dilutions should be determined experimentally by the investigator. Prepare working dilution immediately before use.

Immunohistochemistry 1:100 - 1:500

Immunofluorescence 1:50 - 1:500

APPLICATION NOTES Epitope exposure is recommended.

Epitope exposure with citrate buffer will enhance staining.

Likely to work with frozen sections.

In some cases, the antibody may be diluted further than indicated.

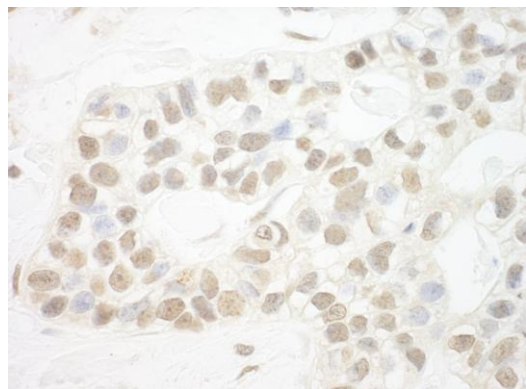
IHC HUMAN CONTROLS Anaplastic Thyroid Carcinoma, Bladder Cell Carcinoma, Breast Carcinoma, Colon Carcinoma, Laryngeal Squamous Cell Carcinoma, Ovarian Carcinoma, Prostate Carcinoma, Skin Basal Cell Carcinoma, Stomach Adenocarcinoma

IHC MOUSE CONTROLS Colon Carcinoma CT26, Squamous Cell Carcinoma, Teratoma

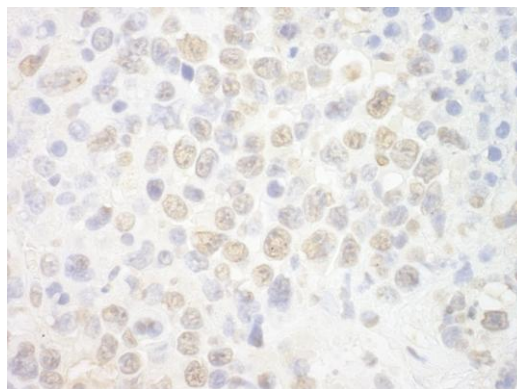
ADDITIONAL INFO <http://www.bethyl.com/product/IHC-00388>

Use the link above to view a current list of citations and other product specific information.

Phospho EZH2 (S21) IHC Antibody: IHC-00388



Detection of Human Phospho-EZH2 (S21) by Immunohistochemistry. *Sample:* FFPE section of human breast carcinoma. *Antibody:* Affinity purified rabbit anti-Phospho-EZH2 (S21) (Cat. No. IHC-00388, Lot No. IHC-00388-3) used at a dilution of 1:250. *Detection:* DAB staining using Immunohistochemistry Accessory Kit (Cat. No. IHC-101).



Detection of Mouse Phospho-EZH2 (S21) by Immunohistochemistry. *Sample:* FFPE section of mouse renal cell carcinoma. *Antibody:* Affinity purified rabbit anti-Phospho-EZH2 (S21) (Cat. No. IHC-00388, Lot No. IHC-00388-3) used at a dilution of 1:250. *Detection:* DAB staining using Immunohistochemistry Accessory Kit (Cat. No. IHC-101).

MATERIAL SAFETY DATA SHEET

CONTENTS This product contains Rabbit immunoglobulin G (IgG) protein in Tris-buffered Saline containing 0.1% BSA containing 0.09% Sodium Azide.

INGREDIENT DESCRIPTIONS **NON-HAZARDOUS:**

Bovine Serum Albumin (BSA) – This product was derived from animals free of infectious or contagious diseases of U.S. Origin. No known toxicity for this biological material.

HAZARDOUS:

Sodium Azide (NaN₃): Azide forms explosive chemical compounds with lead and copper plumbing. Care must be taken to wash waste down drains with large volumes of water. LD50 oral mouse 27 mg/kg. Wash all affected areas with large volumes of water and if swallowed consult your physician immediately.