

# Phospho EZH2 (S21) IHC Antibody

Rabbit Polyclonal

Antigen Affinity Purified

Protein ID NP\_004447.2

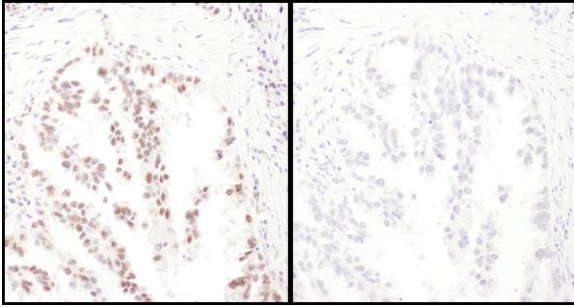
Catalog No. IHC-00388-T

Gene ID 2146

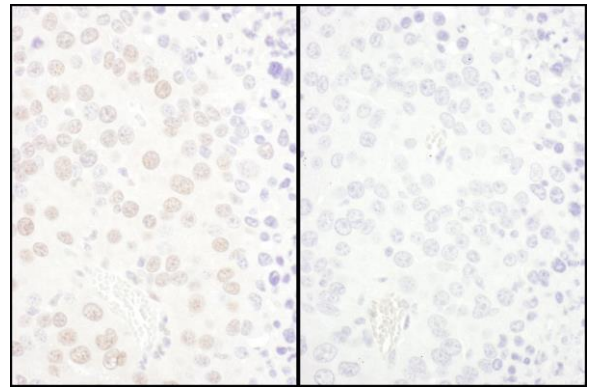


<b>APPLICATIONS</b>	IHC-P, IF
<b>REACTIVITY TESTED</b>	Human and mouse. Other species have not been tested.
<b>ISOTYPE</b>	IgG
<b>AMOUNT</b>	10 µl
<b>STORAGE/SHELF LIFE</b>	2 - 8° C / 1 year from date of receipt
<b>PHYSICAL STATE</b>	Liquid
<b>BUFFER</b>	Tris-buffered Saline containing 0.1% BSA containing 0.09% Sodium Azide
<b>ORIGIN</b>	USA
<b>PRODUCTION PROCEDURES</b>	Antibody was affinity purified using an epitope specific to EZH2 phosphorylated in Serine 21 immobilized on solid support.  The epitope recognized by IHC-00388-T maps to phosphorylated Serine 21 and surrounding residues of human Enhancer of Zeste homolog 2 using the numbering given in entry NP_004447.2 (GeneID 2146).  Antibody concentration was determined by extinction coefficient: absorbance at 280 nm of 1.4 equals 1.0 mg of IgG.
<b>APPLICATIONS</b>	Centrifuge tube to remove product from lid. Optimal working dilutions should be determined experimentally by the investigator. Prepare working dilution immediately before use.  Immunohistochemistry      1:100 - 1:500 Immunofluorescence      1:50 - 1:500
<b>APPLICATION NOTES</b>	Epitope exposure is recommended.  Epitope exposure with citrate buffer will enhance staining.  Likely to work with frozen sections.  In some cases, the antibody may be diluted further than indicated.
<b>IHC HUMAN CONTROLS</b>	Anaplastic Thyroid Carcinoma, Bladder Cell Carcinoma, Breast Carcinoma, Colon Carcinoma, Laryngeal Squamous Cell Carcinoma, Lung Cancer, Ovarian Carcinoma, Prostate Carcinoma, Skin Basal Cell Carcinoma, Stomach Adenocarcinoma
<b>IHC MOUSE CONTROLS</b>	Colon Carcinoma CT26, Renal Cell Carcinoma, Squamous Cell Carcinoma, Teratoma
<b>ADDITIONAL INFO</b>	<a href="http://www.bethyl.com/product/IHC-00388-T">http://www.bethyl.com/product/IHC-00388-T</a>  Use the link above to view SDS, a current list of citations, and other product specific information.

## Phospho EZH2 (S21) IHC Antibody: IHC-00388-T



**Detection of Human Phospho-EZH2 (S21) by Immunohistochemistry.** *Samples:* FFPE serial sections of human lung carcinoma. Mock phosphatase treated section (left) and calf intestinal phosphatase-treated section (right). *Antibody:* Affinity purified rabbit anti-Phospho-EZH2 (S21) (Cat. No. IHC-00388-T, Lot No. IHC-00388-T-4) used at a dilution of 1:250. *Detection:* DAB staining using Immunohistochemistry Accessory Kit (Cat. No. IHC-101).



**Detection of Mouse Phospho-EZH2 (S21) by Immunohistochemistry.** *Samples:* FFPE serial sections of mouse renal cell carcinoma. Mock phosphatase treated section (left) and calf intestinal phosphatase-treated section (right). *Antibody:* Affinity purified rabbit anti-Phospho-EZH2 (S21) (Cat. No. IHC-00388-T, Lot No. IHC-00388-T-4) used at a dilution of 1:250. *Detection:* DAB staining using Immunohistochemistry Accessory Kit (Cat. No. IHC-101).