

DMWD IHC Antibody

Rabbit Polyclonal

Antigen Affinity Purified

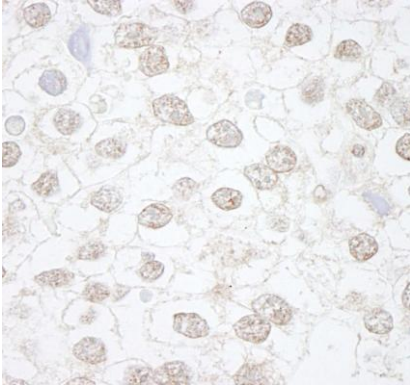
Catalog No. IHC-00354

Protein ID NP_004934.1

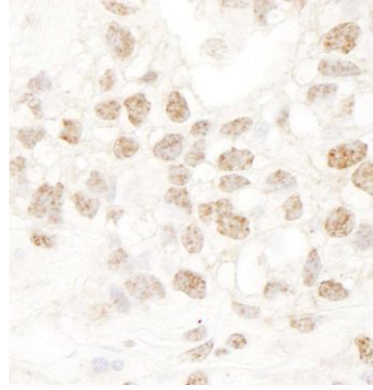
Gene ID 1762



APPLICATIONS	IHC-P, IF
REACTIVITY TESTED	Human. Other species have not been tested.
PRESUMED REACTIVITY	Based on 100% sequence identity, this antibody is predicted to react with Bovine, Dog, Horse, Guinea pig_10141, Panda, Orangutan, Rhesus Monkey, Gorilla, Chimpanzee, White-tufted-ear marmoset, African elephant, Naked mole rat, Small-eared galago and Northern white-cheeked gibbon.
ISOTYPE	IgG
AMOUNT	0.1 ml
STORAGE/SHELF LIFE	2 - 8° C / 1 year from date of receipt
PHYSICAL STATE	Liquid
BUFFER	Tris-buffered Saline containing 0.1% BSA containing 0.09% Sodium Azide
ORIGIN	USA
PRODUCTION PROCEDURES	Antibody was affinity purified using an epitope specific to DMWD immobilized on solid support. The epitope recognized by IHC-00354 maps to a region between residue 609 and 659 of human dystrophin myotonia, WD repeat containing using the numbering given in entry NP_004934.1 (GeneID 1762). Antibody concentration was determined by extinction coefficient: absorbance at 280 nm of 1.4 equals 1.0 mg of IgG.
APPLICATIONS	Centrifuge tube to remove product from lid. Optimal working dilutions should be determined experimentally by the investigator. Prepare working dilution immediately before use. Immunohistochemistry 1:100 - 1:500 Immunofluorescence 1:50 - 1:500
APPLICATION NOTES	Epitope exposure is recommended. Epitope exposure with citrate buffer will enhance staining. Likely to work with frozen sections. In some cases, the antibody may be diluted further than indicated.
IHC HUMAN CONTROLS	Breast Carcinoma, Testicular Seminoma
ADDITIONAL INFO	http://www.bethyl.com/product/IHC-00354 Use the link above to view a current list of citations and other product specific information.



Detection of Human DMWD by Immunohistochemistry.
Sample: FFPE section of human seminoma. *Antibody:* Affinity purified rabbit anti-DMWD (Cat. No. IHC-00354) used at a dilution of 1:250. *Detection:* DAB staining using Immunohistochemistry Accessory Kit (Cat. No. IHC-101).



Detection of Human DMWD by Immunohistochemistry.
Sample: FFPE section of human breast carcinoma. *Antibody:* Affinity purified rabbit anti-DMWD (Cat. No. IHC-00354) used at a dilution of 1:250. *Detection:* DAB staining using Immunohistochemistry Accessory Kit (Cat. No. IHC-101).

MATERIAL SAFETY DATA SHEET

CONTENTS This product contains Rabbit immunoglobulin G (IgG) protein in Tris-buffered Saline containing 0.1% BSA containing 0.09% Sodium Azide.

INGREDIENT DESCRIPTIONS **NON-HAZARDOUS:**

Bovine Serum Albumin (BSA) – This product was derived from animals free of infectious or contagious diseases of U.S. Origin. No known toxicity for this biological material.

HAZARDOUS:

Sodium Azide (NaN₃): Azide forms explosive chemical compounds with lead and copper plumbing. Care must be taken to wash waste down drains with large volumes of water. LD50 oral mouse 27 mg/kg. Wash all affected areas with large volumes of water and if swallowed consult your physician immediately.