

DMWD IHC Antibody

Rabbit Polyclonal

Antigen Affinity Purified

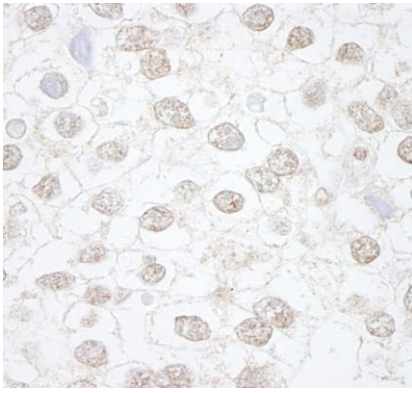
Protein ID NP_004934.1

Catalog No. IHC-00354-T

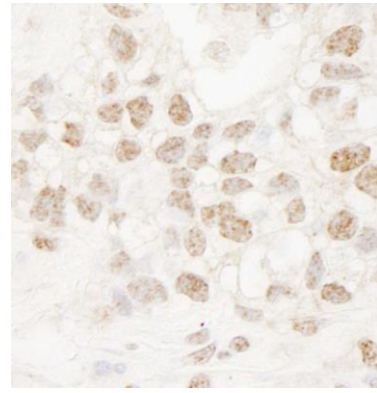
Gene ID 1762



APPLICATIONS	IHC-P, IF
REACTIVITY TESTED	Human. Other species have not been tested.
PRESUMED REACTIVITY	Based on 100% sequence identity, this antibody is predicted to react with Bovine, Dog, Horse, Guinea pig_10141, Panda, Orangutan, Rhesus Monkey, Gorilla, Chimpanzee, White-tufted-ear marmoset, African elephant, Naked mole rat, Small-eared galago and Northern white-cheeked gibbon.
ISOTYPE	IgG
AMOUNT	10 µl
STORAGE/SHELF LIFE	2 - 8° C / 1 year from date of receipt
PHYSICAL STATE	Liquid
BUFFER	Tris-buffered Saline containing 0.1% BSA containing 0.09% Sodium Azide
ORIGIN	USA
PRODUCTION PROCEDURES	<p>Antibody was affinity purified using an epitope specific to DMWD immobilized on solid support.</p> <p>The epitope recognized by IHC-00354-T maps to a region between residue 609 and 659 of human dystrophia myotonica, WD repeat containing using the numbering given in entry NP_004934.1 (GeneID 1762).</p> <p>Antibody concentration was determined by extinction coefficient: absorbance at 280 nm of 1.4 equals 1.0 mg of IgG.</p>
APPLICATIONS	<p>Centrifuge tube to remove product from lid. Optimal working dilutions should be determined experimentally by the investigator. Prepare working dilution immediately before use.</p> <p>Immunohistochemistry 1:100 - 1:500</p> <p>Immunofluorescence 1:50 - 1:500</p>
APPLICATION NOTES	<p>Epitope exposure is recommended.</p> <p>Epitope exposure with citrate buffer will enhance staining.</p> <p>Likely to work with frozen sections.</p> <p>In some cases, the antibody may be diluted further than indicated.</p>
IHC HUMAN CONTROLS	Breast Carcinoma, Testicular Seminoma
ADDITIONAL INFO	<p>http://www.bethyl.com/product/IHC-00354-T</p> <p>Use the link above to view SDS, a current list of citations, and other product specific information.</p>



Detection of Human DMWD by Immunohistochemistry.
Sample: FFPE section of human seminoma. *Antibody:* Affinity purified rabbit anti-DMWD (Cat. No. IHC-00354-T) used at a dilution of 1:250. *Detection:* DAB staining using Immunohistochemistry Accessory Kit (Cat. No. IHC-101).



Detection of Human DMWD by Immunohistochemistry.
Sample: FFPE section of human breast carcinoma. *Antibody:* Affinity purified rabbit anti-DMWD (Cat. No. IHC-00354-T) used at a dilution of 1:250. *Detection:* DAB staining using Immunohistochemistry Accessory Kit (Cat. No. IHC-101).