

# MafB IHC Antibody

Rabbit Polyclonal

Antigen Affinity Purified

Catalog No. IHC-00351

Protein ID NP\_034788.1

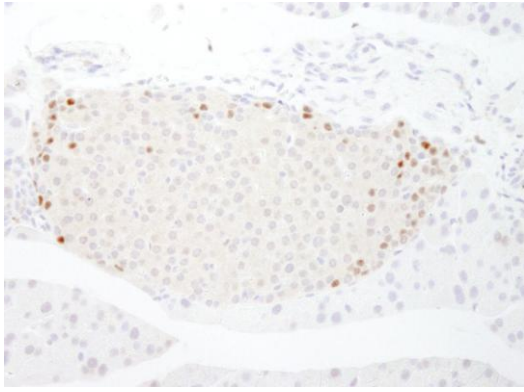
Gene ID 16658



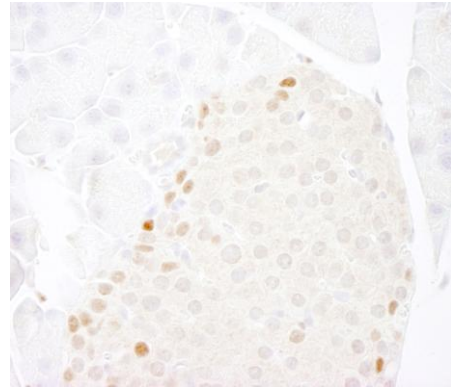
<b>APPLICATIONS</b>	IHC-P, IF
<b>REACTIVITY TESTED</b>	Mouse. Other species have not been tested.
<b>ISOTYPE</b>	IgG
<b>AMOUNT</b>	0.1 ml
<b>STORAGE/SHELF LIFE</b>	2 - 8° C / 1 year from date of receipt
<b>PHYSICAL STATE</b>	Liquid
<b>BUFFER</b>	Tris-buffered Saline containing 0.1% BSA containing 0.09% Sodium Azide
<b>ORIGIN</b>	USA
<b>PRODUCTION PROCEDURES</b>	<p>The epitope recognized by IHC-00351 maps to a region between residue 100 and 150 of mouse v-maf musculoaponeurotic fibrosarcoma oncogene homolog B using the numbering given in entry NP_034788.1 (GeneID 16658 ).</p> <p>Antibody was affinity purified using the peptide immobilized on solid support.</p> <p>Antibody concentration was determined by extinction coefficient: absorbance at 280 nm of 1.4 equals 1.0 mg of IgG.</p>
<b>APPLICATIONS</b>	<p>Centrifuge tube to remove product from lid. Optimal working dilutions should be determined experimentally by the investigator. Prepare working dilution immediately before use.</p> <p>Immunohistochemistry      1:100 - 1:500</p> <p>Immunofluorescence      1:50 - 1:500</p>
<b>APPLICATION NOTES</b>	<p>Epitope exposure is recommended.</p> <p>Epitope exposure with citrate buffer will enhance staining.</p> <p>Likely to work with frozen sections.</p> <p>In some cases, the antibody may be diluted further than indicated.</p>
<b>IHC MOUSE CONTROLS</b>	Pancreas
<b>ADDITIONAL INFO</b>	<p><a href="http://www.bethyl.com/product/IHC-00351">http://www.bethyl.com/product/IHC-00351</a></p> <p>Use the link above to view a current list of citations and other product specific information.</p>

## MafB IHC Antibody: IHC-00351

---



**Detection of Mouse MafB by Immunohistochemistry.** *Sample:* FFPE section of mouse pancreatic islet. *Antibody:* Affinity purified rabbit anti-MafB (Cat. No. IHC-00351) used at a dilution of 1:250. *Detection:* DAB staining using Immunohistochemistry Accessory Kit (Cat. No. IHC-101). Epitope Retrieval Buffer-High pH (IHC-101J) was substituted for Epitope Retrieval Buffer-Reduced pH.



**Detection of Mouse MafB by Immunohistochemistry.** *Sample:* FFPE section of mouse pancreatic islet. *Antibody:* Affinity purified rabbit anti-MafB (Cat. No. IHC-00351) used at a dilution of 1:250. *Detection:* DAB staining using Immunohistochemistry Accessory Kit (Cat. No. IHC-101). Epitope Retrieval Buffer-High pH (IHC-101J) was substituted for Epitope Retrieval Buffer-Reduced pH.

## MATERIAL SAFETY DATA SHEET

### CONTENTS

This product contains Rabbit immunoglobulin G (IgG) protein in Tris-buffered Saline containing 0.1% BSA containing 0.09% Sodium Azide.

### INGREDIENT DESCRIPTIONS **NON-HAZARDOUS:**

Bovine Serum Albumin (BSA) – This product was derived from animals free of infectious or contagious diseases of U.S. Origin. No known toxicity for this biological material.

### **HAZARDOUS:**

Sodium Azide (NaN<sub>3</sub>): Azide forms explosive chemical compounds with lead and copper plumbing. Care must be taken to wash waste down drains with large volumes of water. LD50 oral mouse 27 mg/kg. Wash all affected areas with large volumes of water and if swallowed consult your physician immediately.