

MafB IHC Antibody

Rabbit Polyclonal

Antigen Affinity Purified

Catalog No. IHC-00351-T

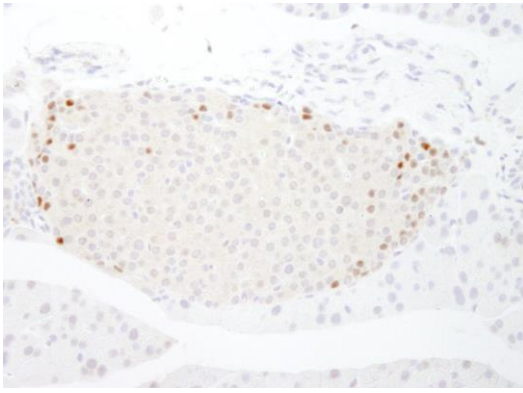
Protein ID NP_034788.1

Gene ID 16658

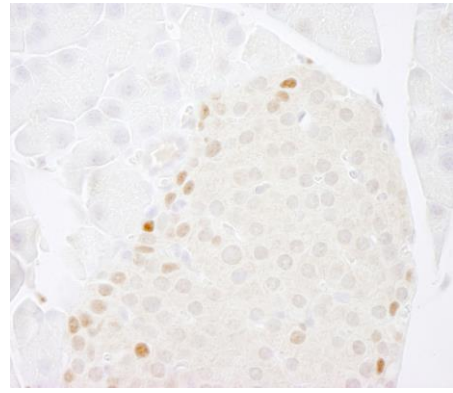


APPLICATIONS	IHC-P, IF
REACTIVITY TESTED	Mouse. Other species have not been tested.
ISOTYPE	IgG
AMOUNT	10 µl
STORAGE/SHELF LIFE	2 - 8° C / 1 year from date of receipt
PHYSICAL STATE	Liquid
BUFFER	Tris-buffered Saline containing 0.1% BSA containing 0.09% Sodium Azide
ORIGIN	USA
PRODUCTION PROCEDURES	<p>Antibody was affinity purified using epitope specific to MafB immobilized on solid support.</p> <p>The epitope recognized by IHC-00351-T maps to a region between residue 100 and 150 of mouse v-maf musculoaponeurotic fibrosarcoma oncogene homolog B using the numbering given in entry NP_034788.1 (GeneID 16658).</p> <p>Antibody concentration was determined by extinction coefficient: absorbance at 280 nm of 1.4 equals 1.0 mg of IgG.</p>
APPLICATIONS	<p>Centrifuge tube to remove product from lid. Optimal working dilutions should be determined experimentally by the investigator. Prepare working dilution immediately before use.</p> <p>Immunohistochemistry 1:100 - 1:500</p> <p>Immunofluorescence 1:50 - 1:500</p>
APPLICATION NOTES	<p>Epitope exposure is recommended.</p> <p>Epitope exposure with citrate buffer will enhance staining.</p> <p>Likely to work with frozen sections.</p> <p>In some cases, the antibody may be diluted further than indicated.</p>
IHC MOUSE CONTROLS	Pancreas
ADDITIONAL INFO	<p>http://www.bethyl.com/product/IHC-00351-T</p> <p>Use the link above to view SDS, a current list of citations, and other product specific information.</p>

MafB IHC Antibody: IHC-00351-T



Detection of Mouse MafB by Immunohistochemistry. *Sample:* FFPE section of mouse pancreatic islet. *Antibody:* Affinity purified rabbit anti-MafB (Cat. No. IHC-00351-T) used at a dilution of 1:250. *Detection:* DAB staining using Immunohistochemistry Accessory Kit (Cat. No. IHC-101). Epitope Retrieval Buffer-High pH (IHC-101J) was substituted for Epitope Retrieval Buffer-Reduced pH.



Detection of Mouse MafB by Immunohistochemistry. *Sample:* FFPE section of mouse pancreatic islet. *Antibody:* Affinity purified rabbit anti-MafB (Cat. No. IHC-00351-T) used at a dilution of 1:250. *Detection:* DAB staining using Immunohistochemistry Accessory Kit (Cat. No. IHC-101). Epitope Retrieval Buffer-High pH (IHC-101J) was substituted for Epitope Retrieval Buffer-Reduced pH.