

SOX2 Antibody AbVantage™ Pack

Produced in Rabbit

Antigen Affinity Purified

Catalog No. A310-620A

Protein ID NP_003097.

Gene ID 6657



CONTENTS	Rabbit anti-SOX2 A301-739A Rabbit anti-SOX2 A301-740A Rabbit anti-SOX2 A301-741A
APPLICATIONS	WB, IP
REACTIVITY	Human
STORAGE / SHELF LIFE	2 - 8° C / 1 year from date of receipt
PHYSICAL STATE	Liquid
ORIGIN	USA

NOTE Centrifuge tube to remove product from lid. Optimal working dilutions should be determined experimentally by the investigator. Prepare working dilution immediately before use.

SOX2 Antibody

Rabbit Polyclonal

Antigen Affinity Purified

Catalog No. A301-739A

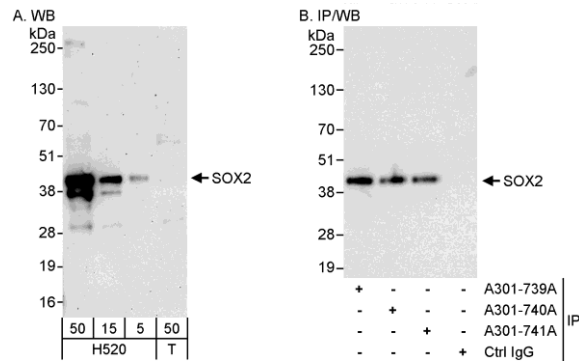
Protein ID NP_003097.

Gene ID 6657



APPLICATIONS	WB, IP				
REACTIVITY TESTED	Human				
PRESUMED REACTIVITY	Based on 100% sequence identity, this antibody is predicted to react with Sheep, Goat, Bovine, Dog, Horse, Rabbit, Guinea pig_10141, Pig, Panda, Orangutan, Rhesus Monkey, Gorilla, Chimpanzee, Crab-eating macaque, European domestic ferret, Cat, African elephant and Domestic water buffalo.				
ISOTYPE	IgG				
AMOUNT	0.1 ml at 0.2 mg/ml				
STORAGE/SHELF LIFE	2 - 8° C / 1 year from date of receipt				
PHYSICAL STATE	Liquid				
BUFFER	Tris-buffered Saline containing 0.1% BSA containing 0.09% Sodium Azide				
ORIGIN	USA				
PRODUCTION PROCEDURES	<p>Antibody was affinity purified using an epitope specific to SOX2 immobilized on solid support.</p> <p>The epitope recognized by A301-739A maps to a region between residue 150 and 200 of human SRY (sex determining region Y)-box 2 using the numbering given in entry NP_003097.1 (GeneID 6657).</p> <p>Immunoglobulin concentration was determined by extinction coefficient: absorbance at 280 nm of 1.4 equals 1.0 mg of IgG.</p>				
APPLICATIONS	<p>Centrifuge tube to remove product from lid. Optimal working dilutions should be determined experimentally by the investigator. Prepare working dilution immediately before use.</p> <table><tr><td>Western Blot</td><td>1:2,000 to 1:10,000</td></tr><tr><td>Immunoprecipitation</td><td>2 to 5 µg/mg lysate</td></tr></table>	Western Blot	1:2,000 to 1:10,000	Immunoprecipitation	2 to 5 µg/mg lysate
Western Blot	1:2,000 to 1:10,000				
Immunoprecipitation	2 to 5 µg/mg lysate				
APPLICATION NOTES	Validation by IP/Western Blot was performed using ReliaBLOT® Western Blot Gel 4-20%, 10 x 10 cm (Cat. No. WB101-42012G) and ReliaBLOT® Reagents (Cat. No. WB120). Related products include ReliaBLOT® IP/WB kits, buffers and reagents.				
ADDITIONAL INFO	<p>http://www.bethyl.com/product/A301-739A</p> <p>Use the link above to view a current list of citations and other product specific information.</p>				

SOX2 Antibody: A301-739A



Detection of Human SOX2 by Western Blot and Immunoprecipitation. *Samples:* Whole cell lysate from H520 (5, 15 and 50 μ g for WB; 1 mg for IP, 20% of IP loaded) and 293T (T; 50 μ g) cells. *Antibodies:* Affinity purified rabbit anti-SOX2 antibody A301-739A used for WB at 0.04 μ g/ml (A) and 1 μ g/ml (B) and used for IP at 3 μ g/mg lysate. SOX2 was also immunoprecipitated by rabbit anti-SOX2 antibodies A301-740A and A301-741A, which recognize downstream epitopes. *Detection:* Chemiluminescence with exposure times of 3 minutes (A) and 3 seconds (B).

MATERIAL SAFETY DATA SHEET

CONTENTS This product contains Rabbit immunoglobulin G (IgG) protein in Tris-buffered Saline containing 0.1% BSA containing 0.09% Sodium Azide.

INGREDIENT DESCRIPTIONS **NON-HAZARDOUS:**

Bovine Serum Albumin (BSA) – This product was derived from animals free of infectious or contagious diseases of U.S. Origin. No known toxicity for this biological material.

HAZARDOUS:

Sodium Azide (NaN₃): Azide forms explosive chemical compounds with lead and copper plumbing. Care must be taken to wash waste down drains with large volumes of water. LD50 oral mouse 27 mg/kg. Wash all affected areas with large volumes of water and if swallowed consult your physician immediately.

SOX2 Antibody

Rabbit Polyclonal

Antigen Affinity Purified

Catalog No. A301-740A

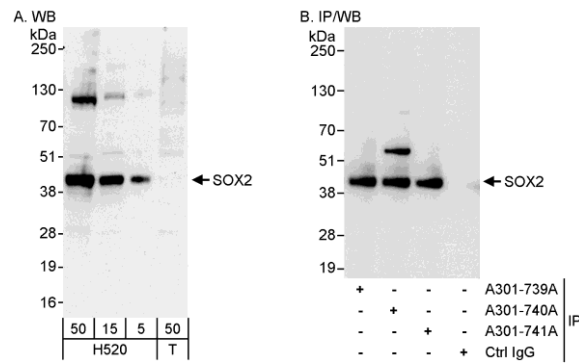
Protein ID NP_003097.

Gene ID 6657



APPLICATIONS	WB, IP				
REACTIVITY TESTED	Human				
PRESUMED REACTIVITY	Based on 100% sequence identity, this antibody is predicted to react with Mouse, Rat, Chicken, Sheep, Bovine, Dog, Horse, Rabbit, Guinea pig_10141, Pig, Panda, Orangutan, Rhesus Monkey, Gorilla, Duckbill platypus, White-tufted-ear marmoset, Crab-eating macaque, European domestic ferret and Southern vole.				
ISOTYPE	IgG				
AMOUNT	0.1 ml at 0.2 mg/ml				
STORAGE/SHELF LIFE	2 - 8° C / 1 year from date of receipt				
PHYSICAL STATE	Liquid				
BUFFER	Tris-buffered Saline containing 0.1% BSA containing 0.09% Sodium Azide				
ORIGIN	USA				
PRODUCTION PROCEDURES	<p>Antibody was affinity purified using an epitope specific to SOX2 immobilized on solid support.</p> <p>The epitope recognized by A301-740A maps to a region between residue 250 and 300 of human SRY (sex determining region Y)-box 2 using the numbering given in entry NP_003097.1 (GeneID 6657).</p> <p>Immunoglobulin concentration was determined by extinction coefficient: absorbance at 280 nm of 1.4 equals 1.0 mg of IgG.</p>				
APPLICATIONS	<p>Centrifuge tube to remove product from lid. Optimal working dilutions should be determined experimentally by the investigator. Prepare working dilution immediately before use.</p> <table><tr><td>Western Blot</td><td>1:2,000 to 1:10,000</td></tr><tr><td>Immunoprecipitation</td><td>2 to 5 µg/mg lysate</td></tr></table>	Western Blot	1:2,000 to 1:10,000	Immunoprecipitation	2 to 5 µg/mg lysate
Western Blot	1:2,000 to 1:10,000				
Immunoprecipitation	2 to 5 µg/mg lysate				
APPLICATION NOTES	Validation by IP/Western Blot was performed using ReliaBLOT® Western Blot Gel 4-20%, 10 x 10 cm (Cat. No. WB101-42012G) and ReliaBLOT® Reagents (Cat. No. WB120). Related products include ReliaBLOT® IP/WB kits, buffers and reagents.				
ADDITIONAL INFO	<p>http://www.bethyl.com/product/A301-740A</p> <p>Use the link above to view a current list of citations and other product specific information.</p>				

SOX2 Antibody: A301-740A



Detection of Human SOX2 by Western Blot and Immunoprecipitation. *Samples:* Whole cell lysate from H520 (5, 15 and 50 μ g for WB; 1 mg for IP, 20% of IP loaded) and 293T (T; 50 μ g) cells. *Antibodies:* Affinity purified rabbit anti-SOX2 antibody A301-740A used for WB at 0.04 μ g/ml (A) and 1 μ g/ml (B) and used for IP at 3 μ g/mg lysate. SOX2 was also immunoprecipitated by rabbit anti-SOX2 antibodies A301-739A and A301-741A, which recognize other epitopes. *Detection:* Chemiluminescence with exposure times of 30 seconds (A) and 1 second (B).

MATERIAL SAFETY DATA SHEET

CONTENTS This product contains Rabbit immunoglobulin G (IgG) protein in Tris-buffered Saline containing 0.1% BSA containing 0.09% Sodium Azide.

INGREDIENT DESCRIPTIONS **NON-HAZARDOUS:**

Bovine Serum Albumin (BSA) – This product was derived from animals free of infectious or contagious diseases of U.S. Origin. No known toxicity for this biological material.

HAZARDOUS:

Sodium Azide (NaN₃): Azide forms explosive chemical compounds with lead and copper plumbing. Care must be taken to wash waste down drains with large volumes of water. LD50 oral mouse 27 mg/kg. Wash all affected areas with large volumes of water and if swallowed consult your physician immediately.

SOX2 Antibody

Rabbit Polyclonal

Antigen Affinity Purified

Catalog No. A301-741A

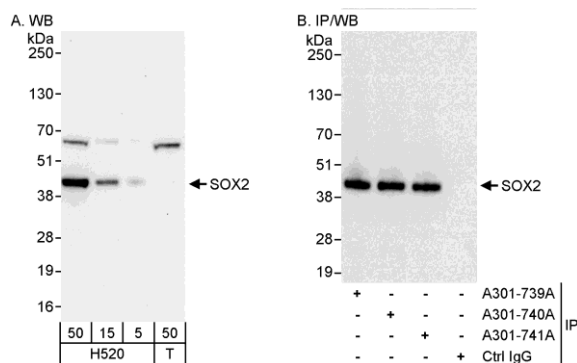
Protein ID NP_003097.

Gene ID 6657



APPLICATIONS	WB, IP
REACTIVITY TESTED	Human
PRESUMED REACTIVITY	Based on 100% sequence identity, this antibody is predicted to react with Mouse, Rat, <i>X. laevis</i> , <i>X. tropicalis</i> , Chicken, Sheep, Bovine, Dog, Horse, Rabbit, Guinea pig_10141, Pig, Panda, Orangutan, Rhesus Monkey, Gorilla, Chimpanzee, West Indian ocean coelacanth, Atlantic salmon and Southern vole.
ISOTYPE	IgG
AMOUNT	0.1 ml at 0.2 mg/ml
STORAGE/SHELF LIFE	2 - 8° C / 1 year from date of receipt
PHYSICAL STATE	Liquid
BUFFER	Tris-buffered Saline containing 0.1% BSA containing 0.09% Sodium Azide
ORIGIN	USA
PRODUCTION PROCEDURES	<p>Antibody was affinity purified using an epitope specific to SOX2 immobilized on solid support.</p> <p>The epitope recognized by A301-741A maps to a region between residue 295 and 317 of human SRY (sex determining region Y)-box 2 using the numbering given in entry NP_003097.1 (GeneID 6657).</p> <p>Immunoglobulin concentration was determined by extinction coefficient: absorbance at 280 nm of 1.4 equals 1.0 mg of IgG.</p>
APPLICATIONS	<p>Centrifuge tube to remove product from lid. Optimal working dilutions should be determined experimentally by the investigator. Prepare working dilution immediately before use.</p> <p>Western Blot 1:2,000 to 1:10,000</p> <p>Immunoprecipitation 2 to 5 µg/mg lysate</p>
APPLICATION NOTES	Validation by IP/Western Blot was performed using ReliaBLOT® Western Blot Gel 4-20%, 10 x 10 cm (Cat. No. WB101-42012G) and ReliaBLOT® Reagents (Cat. No. WB120). Related products include ReliaBLOT® IP/WB kits, buffers and reagents.
ADDITIONAL INFO	<p>http://www.bethyl.com/product/A301-741A</p> <p>Use the link above to view a current list of citations and other product specific information.</p>

SOX2 Antibody: A301-741A



Detection of Human SOX2 by Western Blot and Immunoprecipitation. *Samples:* Whole cell lysate from H520 (5, 15 and 50 μ g for WB; 1 mg for IP, 20% of IP loaded) and 293T (T; 50 μ g) cells. *Antibodies:* Affinity purified rabbit anti-SOX2 antibody A301-741A used for WB at 0.04 μ g/ml (A) and 1 μ g/ml (B) and used for IP at 3 μ g/mg lysate. SOX2 was also immunoprecipitated by rabbit anti-SOX2 antibodies A301-739A and A301-740A, which recognize upstream epitopes. *Detection:* Chemiluminescence with exposure times of 10 seconds (A) and 1 second (B).

MATERIAL SAFETY DATA SHEET

CONTENTS This product contains Rabbit immunoglobulin G (IgG) protein in Tris-buffered Saline containing 0.1% BSA containing 0.09% Sodium Azide.

INGREDIENT DESCRIPTIONS **NON-HAZARDOUS:**

Bovine Serum Albumin (BSA) – This product was derived from animals free of infectious or contagious diseases of U.S. Origin. No known toxicity for this biological material.

HAZARDOUS:

Sodium Azide (NaN₃): Azide forms explosive chemical compounds with lead and copper plumbing. Care must be taken to wash waste down drains with large volumes of water. LD50 oral mouse 27 mg/kg. Wash all affected areas with large volumes of water and if swallowed consult your physician immediately.