

PARP1 Antibody AbVantage™ Pack

Produced in Rabbit

Antigen Affinity Purified

Catalog No. A310-476A

Protein ID NP_001609.1

Gene ID 142



CONTENTS Rabbit anti-PARP1 A301-375A
Rabbit anti-PARP1 A301-376A

APPLICATIONS WB, PLA

REACTIVITY Human

STORAGE / SHELF LIFE 2 - 8° C / 1 year from date of receipt

PHYSICAL STATE Liquid

ORIGIN USA

NOTE Centrifuge tube to remove product from lid. Optimal working dilutions should be determined experimentally by the investigator. Prepare working dilution immediately before use.

PARP1 Antibody

Rabbit Polyclonal

Antigen Affinity Purified

Catalog No. A301-375A

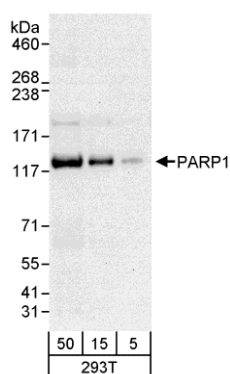
Protein ID NP_001609.1

Gene ID 142

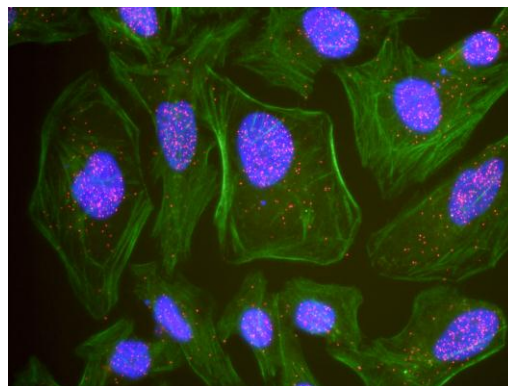


APPLICATIONS	WB, PLA						
REACTIVITY TESTED	Human						
PRESUMED REACTIVITY	Based on 100% sequence identity, this antibody is predicted to react with Bovine, Rabbit, Pig, Rhesus Monkey, Gorilla, Chimpanzee, White-tufted-ear marmoset, Crab-eating macaque, Small-eared galago, Thirteen-lined ground squirrel and Northern white-cheeked gibbon.						
ISOTYPE	IgG						
AMOUNT	0.1 ml at 0.2 mg/ml						
STORAGE/SHELF LIFE	2 - 8° C / 1 year from date of receipt						
PHYSICAL STATE	Liquid						
BUFFER	Tris-buffered Saline containing 0.1% BSA containing 0.09% Sodium Azide						
ORIGIN	USA						
PRODUCTION PROCEDURES	<p>Antibody was affinity purified using an epitope specific to PARP1 immobilized on solid support.</p> <p>The epitope recognized by A301-375A maps to a region between residue 1 and 50 of human poly (ADP-ribose) polymerase family, member 1 using the numbering given in entry NP_001609.1 (GeneID 142).</p> <p>Immunoglobulin concentration was determined by extinction coefficient: absorbance at 280 nm of 1.4 equals 1.0 mg of IgG.</p>						
APPLICATIONS	<p>Centrifuge tube to remove product from lid. Optimal working dilutions should be determined experimentally by the investigator. Prepare working dilution immediately before use.</p> <table><tr><td>Western Blot</td><td>1:2,000 - 1:10,000</td></tr><tr><td>Immunoprecipitation</td><td>Not recommended.</td></tr><tr><td>Proximity Ligation Assay</td><td>1:200 - 1:2,000</td></tr></table>	Western Blot	1:2,000 - 1:10,000	Immunoprecipitation	Not recommended.	Proximity Ligation Assay	1:200 - 1:2,000
Western Blot	1:2,000 - 1:10,000						
Immunoprecipitation	Not recommended.						
Proximity Ligation Assay	1:200 - 1:2,000						
APPLICATION NOTES	<p>Validation by IP/Western Blot was performed using ReliaBLOT® Western Blot Gel 4-8%, 10 x 10 cm (Cat. No. WB101-40812G). Related products include ReliaBLOT® IP/WB kits, buffers and reagents.</p> <p>PLA validation was performed using Duolink In Situ kits, buffers and reagents (Cat # OLK-*).</p>						

PARP1 Antibody: A301-375A



Detection of Human PARP1 by Western Blot. *Samples:* Whole cell lysate (5, 15 and 50 µg) from 293T cells. *Antibody:* Affinity purified rabbit anti-PARP1 antibody A301-375A used for WB at 0.04 µg/ml. *Detection:* Chemiluminescence with an exposure time of 30 seconds.



This antibody is qualified for the Proximity Ligation Assay (PLA). PLA uses paired antibodies, so please refer to the PLA page of our website for specific imaging obtained by pairing this antibody with other qualified antibodies. The above image shows representative results for PLA using three color fluorescence, including DAPI stained nuclei (blue), phalloidin stained cytoplasmic F-actin (green), and PLA positive signal (red).

MATERIAL SAFETY DATA SHEET

CONTENTS This product contains Rabbit immunoglobulin G (IgG) protein in Tris-buffered Saline containing 0.1% BSA containing 0.09% Sodium Azide.

INGREDIENT DESCRIPTIONS **NON-HAZARDOUS:**

Bovine Serum Albumin (BSA) – This product was derived from animals free of infectious or contagious diseases of U.S. Origin. No known toxicity for this biological material.

HAZARDOUS:

Sodium Azide (NaN3): Azide forms explosive chemical compounds with lead and copper plumbing. Care must be taken to wash waste down drains with large volumes of water. LD50 oral mouse 27 mg/kg. Wash all affected areas with large volumes of water and if swallowed consult your physician immediately.

PARP1 Antibody

Rabbit Polyclonal

Antigen Affinity Purified

Catalog No. A301-376A

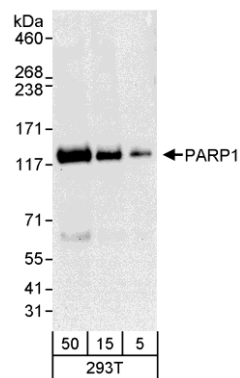
Protein ID NP_001609.1

Gene ID 142

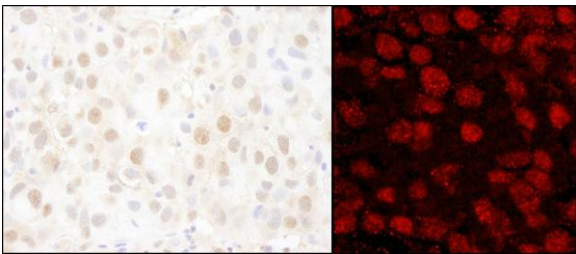


APPLICATIONS	WB, IHC-P, IF								
REACTIVITY TESTED	Human								
PRESUMED REACTIVITY	Based on 100% sequence identity, this antibody is predicted to react with Dog, Horse, Orangutan, Rhesus Monkey, Gorilla, Chimpanzee, Crab-eating macaque and European domestic ferret.								
ISOTYPE	IgG								
AMOUNT	0.1 ml at 0.2 mg/ml								
STORAGE/SHELF LIFE	2 - 8° C / 1 year from date of receipt								
PHYSICAL STATE	Liquid								
BUFFER	Tris-buffered Saline containing 0.1% BSA containing 0.09% Sodium Azide								
ORIGIN	USA								
PRODUCTION PROCEDURES	<p>Antibody was affinity purified using an epitope specific to PARP1 immobilized on solid support.</p> <p>The epitope recognized by A301-376A maps to a region between residue 50 and 100 of human poly (ADP-ribose) polymerase family, member 1 using the numbering given in entry NP_001609.1 (GeneID 142).</p> <p>Immunoglobulin concentration was determined by extinction coefficient: absorbance at 280 nm of 1.4 equals 1.0 mg of IgG.</p>								
APPLICATIONS	<p>Centrifuge tube to remove product from lid. Optimal working dilutions should be determined experimentally by the investigator. Prepare working dilution immediately before use.</p> <table><tr><td>Western Blot</td><td>1:2,000 - 1:10,000</td></tr><tr><td>Immunoprecipitation</td><td>Not recommended.</td></tr><tr><td>Immunohistochemistry</td><td>1:100 to 1:500. Epitope retrieval with citrate buffer pH6.0 is recommended.</td></tr><tr><td>Immunofluorescence</td><td>1:50 to 1:250.</td></tr></table>	Western Blot	1:2,000 - 1:10,000	Immunoprecipitation	Not recommended.	Immunohistochemistry	1:100 to 1:500. Epitope retrieval with citrate buffer pH6.0 is recommended.	Immunofluorescence	1:50 to 1:250.
Western Blot	1:2,000 - 1:10,000								
Immunoprecipitation	Not recommended.								
Immunohistochemistry	1:100 to 1:500. Epitope retrieval with citrate buffer pH6.0 is recommended.								
Immunofluorescence	1:50 to 1:250.								
APPLICATION NOTES	<p>Validation by IP/Western Blot was performed using ReliaBLOT® Western Blot Gel 4-8%, 10 x 10 cm (Cat. No. WB101-40812G). Related products include ReliaBLOT® IP/WB kits, buffers and reagents.</p> <p>IHC validation was performed using Immunohistochemistry Accessory Kit (Cat. # IHC-101).</p>								
IHC HUMAN CONTROLS	Breast Carcinoma, Ovarian Carcinoma								

PARP1 Antibody: A301-376A



Detection of Human PARP1 by Western Blot. *Samples:* Whole cell lysate (5, 15 and 50 µg) from 293T cells. *Antibody:* Affinity purified rabbit anti-PARP1 antibody A301-376A used for WB at 0.04 µg/ml. *Detection:* Chemiluminescence with an exposure time of 30 seconds.



Detection of Human PARP1 by Immunohistochemistry and Immunofluorescence. *Sample:* FFPE sections of human breast carcinoma. *Antibody:* Affinity purified rabbit anti-PARP1 (Cat. No. A301-376A Lot1) used at a dilution of 1:200 (1 µg/ml) and 1:80 (2.5 µg/ml). *Detection:* DAB and Red-fluorescent Goat anti-Rabbit IgG-heavy and light chain, cross-adsorbed Antibody DyLight® 594 Conjugated (Cat. No. A120-601D4) used at a dilution of 1:100

MATERIAL SAFETY DATA SHEET

CONTENTS This product contains Rabbit immunoglobulin G (IgG) protein in Tris-buffered Saline containing 0.1% BSA containing 0.09% Sodium Azide.

INGREDIENT DESCRIPTIONS **NON-HAZARDOUS:**

Bovine Serum Albumin (BSA) – This product was derived from animals free of infectious or contagious diseases of U.S. Origin. No known toxicity for this biological material.

HAZARDOUS:

Sodium Azide (NaN3): Azide forms explosive chemical compounds with lead and copper plumbing. Care must be taken to wash waste down drains with large volumes of water. LD50 oral mouse 27 mg/kg. Wash all affected areas with large volumes of water and if swallowed consult your physician immediately.