

AKAP8L/HA95 Antibody AbVantage™ Pack

Produced in Rabbit

Antigen Affinity Purified

Catalog No. A310-472A

Protein ID NP_055186.2

Gene ID 26993



CONTENTS	Rabbit anti-AKAP8L/HA95 A301-365A Rabbit anti-AKAP8L/HA95 A301-366A
APPLICATIONS	WB, IP, IHC-P, IF
REACTIVITY	Human
STORAGE / SHELF LIFE	2 - 8° C / 1 year from date of receipt
PHYSICAL STATE	Liquid
ORIGIN	USA
NOTE	Centrifuge tube to remove product from lid. Optimal working dilutions should be determined experimentally by the investigator. Prepare working dilution immediately before use.

AKAP8L/HA95 Antibody

Rabbit Polyclonal

Antigen Affinity Purified

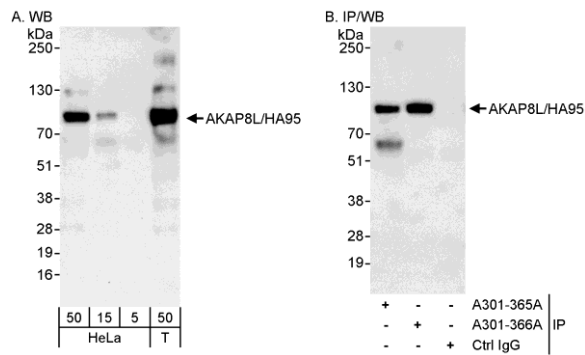
Catalog No. A301-365A

Protein ID NP_055186.2

Gene ID 26993



APPLICATIONS	WB, IP, IHC-P, IF								
REACTIVITY TESTED	Human								
PRESUMED REACTIVITY	Based on 100% sequence identity, this antibody is predicted to react with Bovine, Dog, Horse, Pig, Panda, Gorilla, Chimpanzee, White-tufted-ear marmoset, Chinese hamster, Naked mole rat, Little brown bat, and Thirteen-lined ground squirrel.								
ISOTYPE	IgG								
AMOUNT	0.1 ml at 0.2 mg/ml								
STORAGE/SHELF LIFE	2 - 8° C / 1 year from date of receipt								
PHYSICAL STATE	Liquid								
BUFFER	Tris-buffered Saline containing 0.1% BSA containing 0.09% Sodium Azide								
ORIGIN	USA								
PRODUCTION PROCEDURES	<p>Antibody was affinity purified using an epitope specific to AKAP8L/HA95 immobilized on solid support.</p> <p>The epitope recognized by A301-365A maps to a region between residue 525 and 575 of human A kinase (PRKA) anchor protein 8-like (helicase A-binding protein 95 kDa) using the numbering given in entry NP_055186.2 (GeneID 26993).</p> <p>Immunoglobulin concentration was determined by extinction coefficient: absorbance at 280 nm of 1.4 equals 1.0 mg of IgG.</p>								
APPLICATIONS	<p>Centrifuge tube to remove product from lid. Optimal working dilutions should be determined experimentally by the investigator. Prepare working dilution immediately before use.</p> <table><tr><td>Western Blot</td><td>1:2,000 to 1:10,000</td></tr><tr><td>Immunoprecipitation</td><td>2 to 5 µg/mg lysate</td></tr><tr><td>Immunohistochemistry</td><td>1:100 to 1:500. Epitope retrieval with citrate buffer pH6.0 is recommended.</td></tr><tr><td>Immunofluorescence</td><td>1:50 to 1:500</td></tr></table>	Western Blot	1:2,000 to 1:10,000	Immunoprecipitation	2 to 5 µg/mg lysate	Immunohistochemistry	1:100 to 1:500. Epitope retrieval with citrate buffer pH6.0 is recommended.	Immunofluorescence	1:50 to 1:500
Western Blot	1:2,000 to 1:10,000								
Immunoprecipitation	2 to 5 µg/mg lysate								
Immunohistochemistry	1:100 to 1:500. Epitope retrieval with citrate buffer pH6.0 is recommended.								
Immunofluorescence	1:50 to 1:500								
APPLICATION NOTES	<p>Validation by IP/Western Blot was performed using ReliaBLOT® Western Blot Gel 4-8%, 10 x 10 cm (Cat. No. WB101-40812G) and ReliaBLOT® Reagents (Cat. No. WB120). Related products include ReliaBLOT® IP/WB kits, buffers and reagents.</p> <p>IHC validation was performed using Immunohistochemistry Accessory Kit (Cat. # IHC-101).</p>								



Detection of Human AKAP8L/HA95 by Western Blot and Immunoprecipitation. *Samples:* Whole cell lysate from HeLa (5, 15 and 50 µg for WB; 1 mg for IP, 20% of IP loaded) and 293T (T; 50 µg) cells. *Antibodies:* Affinity purified rabbit anti-AKAP8L/HA95 antibody A301-365A used for WB at 0.04 µg/ml (A) and 1 µg/ml (B) and used for IP at 3 µg/mg lysate. AKAP8L/HA95 was also immunoprecipitated by rabbit anti-AKAP8L/HA95 antibody A301-366A, which recognizes a downstream epitope. *Detection:* Chemiluminescence with exposure times of 30 seconds (A) and 3 seconds (B).

For in vitro laboratory use only. Not for any clinical, therapeutic or diagnostic use in humans or animals. Not for human or animal consumption. This product may not be resold or modified for resale without the prior written approval of Bethyl Laboratories, Inc. The information provided in this data sheet is believed to be correct but does not purport to be all-inclusive and is intended to be used as a guide. Bethyl Laboratories, Inc. shall not be liable or responsible in any way for use of either this information or the material supplied. Disposal of hazardous material may be subject to federal, state or local laws or regulations.

MATERIAL SAFETY DATA SHEET

CONTENTS

This product contains Rabbit immunoglobulin G (IgG) protein in Tris-buffered Saline containing 0.1% BSA containing 0.09% Sodium Azide.

INGREDIENT DESCRIPTIONS **NON-HAZARDOUS:**

Bovine Serum Albumin (BSA) – This product was derived from animals free of infectious or contagious diseases of U.S. Origin. No known toxicity for this biological material.

HAZARDOUS:

Sodium Azide (NaN_3): Azide forms explosive chemical compounds with lead and copper plumbing. Care must be taken to wash waste down drains with large volumes of water. LD50 oral mouse 27 mg/kg. Wash all affected areas with large volumes of water and if swallowed consult your physician immediately.

AKAP8L/HA95 Antibody

Rabbit Polyclonal

Antigen Affinity Purified

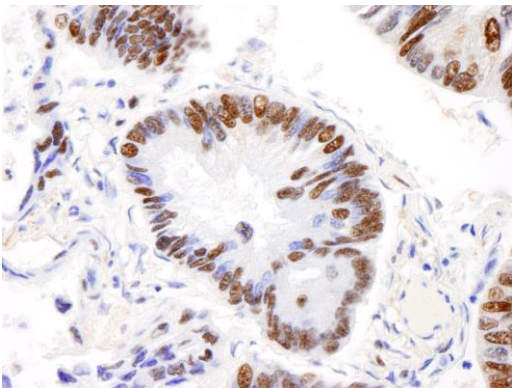
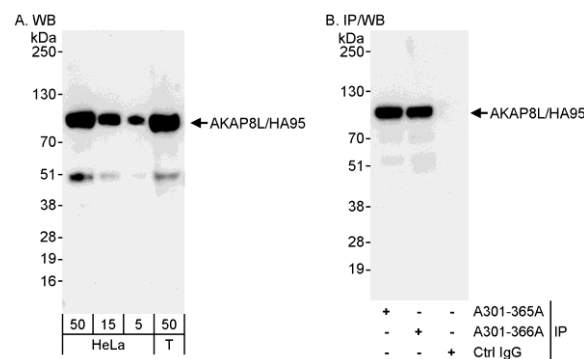
Catalog No. A301-366A

Protein ID NP_055186.2

Gene ID 26993



APPLICATIONS	WB, IP, IHC-P, IF								
REACTIVITY TESTED	Human								
PRESUMED REACTIVITY	Based on 100% sequence identity, this antibody is predicted to react with Gorilla, Chimpanzee, Chinese hamster, Naked mole rat, and Northern white-cheeked gibbon.								
ISOTYPE	IgG								
AMOUNT	0.1 ml at 0.2 mg/ml								
STORAGE/SHELF LIFE	2 - 8° C / 1 year from date of receipt								
PHYSICAL STATE	Liquid								
BUFFER	Tris-buffered Saline containing 0.1% BSA containing 0.09% Sodium Azide								
ORIGIN	USA								
PRODUCTION PROCEDURES	<p>Antibody was affinity purified using an epitope specific to AKAP8L/HA95 immobilized on solid support.</p> <p>The epitope recognized by A301-366A maps to a region between residue 596 and 646 of human A kinase (PRKA) anchor protein 8-like (helicase A-binding protein 95 kDa) using the numbering given in entry NP_055186.2 (GeneID 26993).</p> <p>Immunoglobulin concentration was determined by extinction coefficient: absorbance at 280 nm of 1.4 equals 1.0 mg of IgG.</p>								
APPLICATIONS	<p>Centrifuge tube to remove product from lid. Optimal working dilutions should be determined experimentally by the investigator. Prepare working dilution immediately before use.</p> <table><tr><td>Western Blot</td><td>1:2,000 to 1:10,000</td></tr><tr><td>Immunoprecipitation</td><td>2 to 5 µg/mg lysate</td></tr><tr><td>Immunohistochemistry</td><td>1:500 to 1:2,000. Epitope retrieval with citrate buffer pH6.0 is recommended.</td></tr><tr><td>Immunofluorescence</td><td>1:250 to 1:2,000</td></tr></table>	Western Blot	1:2,000 to 1:10,000	Immunoprecipitation	2 to 5 µg/mg lysate	Immunohistochemistry	1:500 to 1:2,000. Epitope retrieval with citrate buffer pH6.0 is recommended.	Immunofluorescence	1:250 to 1:2,000
Western Blot	1:2,000 to 1:10,000								
Immunoprecipitation	2 to 5 µg/mg lysate								
Immunohistochemistry	1:500 to 1:2,000. Epitope retrieval with citrate buffer pH6.0 is recommended.								
Immunofluorescence	1:250 to 1:2,000								
APPLICATION NOTES	<p>Validation by IP/Western Blot was performed using ReliaBLOT® Western Blot Gel 4-8%, 10 x 10 cm (Cat. No. WB101-40812G) and ReliaBLOT® Reagents (Cat. No. WB120). Related products include ReliaBLOT® IP/WB kits, buffers and reagents.</p> <p>IHC validation was performed using Immunohistochemistry Accessory Kit (Cat. # IHC-101).</p>								
IHC HUMAN CONTROLS	Anaplastic Thyroid Carcinoma, Bladder Cell Carcinoma, Breast Carcinoma, Colon Carcinoma, Lung Adenocarcinoma, Ovarian Carcinoma, Pancreatic Islet Cell Tumor, Prostate Carcinoma, Skin Basal Cell Carcinoma, Stomach Adenocarcinoma, Testicular Seminoma								



Detection of Human AKAP8L/HA95 by Western Blot and Immunoprecipitation. *Samples:* Whole cell lysate from HeLa (5, 15 and 50 µg for WB; 1 mg for IP, 20% of IP loaded) and 293T (T; 50 µg) cells. *Antibodies:* Affinity purified rabbit anti-AKAP8L/HA95 antibody A301-366A used for WB at 0.04 µg/ml (A) and 1 µg/ml (B) and used for IP at 3 µg/mg lysate. AKAP8L/HA95 was also immunoprecipitated by rabbit anti-AKAP8L/HA95 antibody A301-365A, which recognizes an upstream epitope. *Detection:* Chemiluminescence with exposure times of 10 seconds (A) and 1 second (B).

Detection of Human AKAP8L/HA95 by Immunohistochemistry. *Sample:* FFPE section of human lung carcinoma. *Antibody:* Affinity purified rabbit anti-AKAP8L/HA95 (Cat. No. A301-366A) used at a dilution of 1:200 (1µg/ml). *Detection:* DAB staining using Immunohistochemistry Accessory Kit (Cat. No. IHC-101).

MATERIAL SAFETY DATA SHEET

CONTENTS

This product contains Rabbit immunoglobulin G (IgG) protein in Tris-buffered Saline containing 0.1% BSA containing 0.09% Sodium Azide.

INGREDIENT DESCRIPTIONS **NON-HAZARDOUS:**

Bovine Serum Albumin (BSA) – This product was derived from animals free of infectious or contagious diseases of U.S. Origin. No known toxicity for this biological material.

HAZARDOUS:

Sodium Azide (NaN₃): Azide forms explosive chemical compounds with lead and copper plumbing. Care must be taken to wash waste down drains with large volumes of water. LD₅₀ oral mouse 27 mg/kg. Wash all affected areas with large volumes of water and if swallowed consult your physician immediately.