

# AKAP8/AKAP95 Antibody AbVantage™ Pack

Produced in Rabbit

Antigen Affinity Purified

Catalog No. A310-346A

Protein ID NP\_005849.1

Gene ID 10270



<b>CONTENTS</b>	Rabbit anti-AKAP8/AKAP95	A301-061A
	Rabbit anti-AKAP8/AKAP95	A301-062A
<b>APPLICATIONS</b>	WB, IP, IHC-P, IF	
<b>REACTIVITY</b>	Human	
<b>STORAGE / SHELF LIFE</b>	2 - 8° C / 1 year from date of receipt	
<b>PHYSICAL STATE</b>	Liquid	
<b>ORIGIN</b>	USA	
<b>NOTE</b>	Centrifuge tube to remove product from lid. Optimal working dilutions should be determined experimentally by the investigator. Prepare working dilution immediately before use.	

# AKAP8/AKAP95 Antibody

Rabbit Polyclonal

Antigen Affinity Purified

Catalog No. A301-061A

Protein ID NP\_005849.1

Gene ID 10270



**APPLICATIONS** WB, IP, IHC-P, IF

**REACTIVITY TESTED** Human

**ISOTYPE** IgG

**AMOUNT** 0.1 ml at 0.2 mg/ml

**STORAGE/SHELF LIFE** 2 - 8° C / 1 year from date of receipt

**PHYSICAL STATE** Liquid

**BUFFER** Tris-buffered Saline containing 0.1% BSA containing 0.09% Sodium Azide

**ORIGIN** USA

**PRODUCTION PROCEDURES** Antibody was affinity purified using an epitope specific to AKAP8/AKAP95 immobilized on solid support.

The epitope recognized by A301-061A maps to a region between residue 575 and 625 of human A-kinase anchor protein 8 using the numbering given in entry NP\_005849.1 (GeneID 10270).

Immunoglobulin concentration was determined by extinction coefficient: absorbance at 280 nm of 1.4 equals 1.0 mg of IgG.

**APPLICATIONS** Centrifuge tube to remove product from lid. Optimal working dilutions should be determined experimentally by the investigator. Prepare working dilution immediately before use.

Western Blot 1:2,000 to 1:10,000

Immunoprecipitation 2 to 5 µg/mg lysate

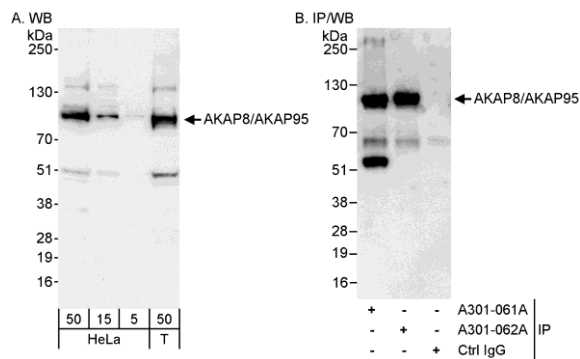
Immunohistochemistry 1:200 to 1:1,000. Epitope retrieval with citrate buffer pH6.0 is recommended for FFPE tissue sections.

Immunofluorescence 1:100 to 1:1,000

**APPLICATION NOTES** Validation by IP/Western Blot was performed using ReliaBLOT® Western Blot Gel 4-8%, 10 x 10 cm (Cat. No. WB101-40812G) and ReliaBLOT® Reagents (Cat. No. WB120). Related products include ReliaBLOT® IP/WB kits, buffers and reagents. IHC validation was performed using Immunohistochemistry Accessory Kit (Cat. # IHC-101).

**ADDITIONAL INFO** <http://www.bethyl.com/product/A301-061A>

Use the link above to view a current list of citations and other product specific information.



**Detection of Human AKAP8/AKAP95 by Western Blot and Immunoprecipitation.** *Samples:* Whole cell lysate from HeLa (5, 15 and 50  $\mu$ g for WB; 1 mg for IP, 20% of IP loaded) and 293T (T; 50  $\mu$ g) cells. *Antibodies:* Affinity purified rabbit anti-AKAP8/AKAP95 antibody A301-061A used for WB at 0.04  $\mu$ g/ml (A) and 1  $\mu$ g/ml (B) and used for IP at 3  $\mu$ g/mg lysate. AKAP8/AKAP95 was also immunoprecipitated by rabbit anti-AKAP8/AKAP95 antibody A301-062A, which recognizes a downstream epitope. *Detection:* Chemiluminescence with exposure times of 10 seconds (A and B).

## MATERIAL SAFETY DATA SHEET

### CONTENTS

This product contains Rabbit immunoglobulin G (IgG) protein in Tris-buffered Saline containing 0.1% BSA containing 0.09% Sodium Azide.

### INGREDIENT DESCRIPTIONS    **NON-HAZARDOUS:**

Bovine Serum Albumin (BSA) – This product was derived from animals free of infectious or contagious diseases of U.S. Origin. No known toxicity for this biological material.

#### **HAZARDOUS:**

Sodium Azide (NaN<sub>3</sub>): Azide forms explosive chemical compounds with lead and copper plumbing. Care must be taken to wash waste down drains with large volumes of water. LD<sub>50</sub> oral mouse 27 mg/kg. Wash all affected areas with large volumes of water and if swallowed consult your physician immediately.

# AKAP8/AKAP95 Antibody

Rabbit Polyclonal

Antigen Affinity Purified

Catalog No. A301-062A

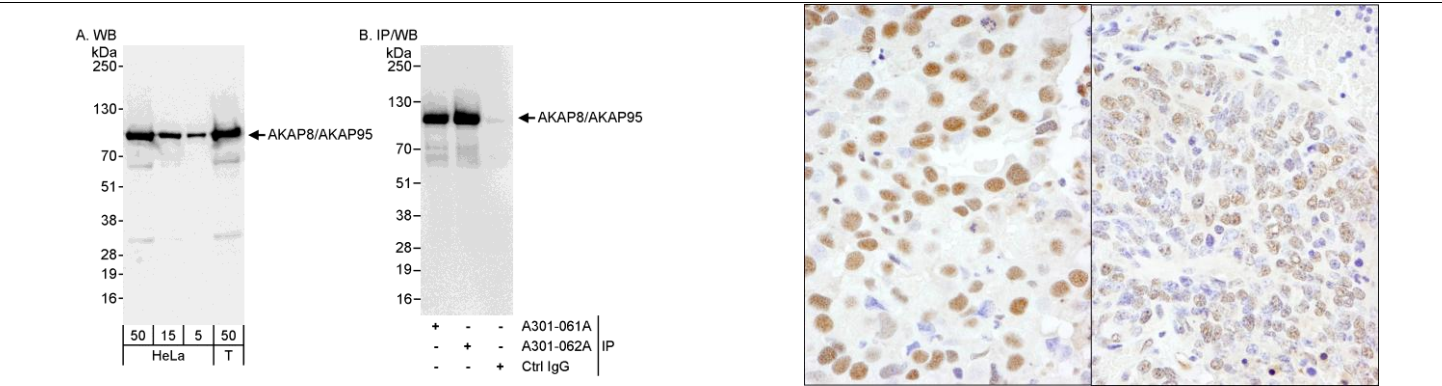
Protein ID NP\_005849.1

Gene ID 10270



<b>APPLICATIONS</b>	WB, IP, IHC-P, IF								
<b>REACTIVITY TESTED</b>	Human, Mouse								
<b>PRESUMED REACTIVITY</b>	Based on 100% sequence identity, this antibody is predicted to react with Bovine, Gorilla and Chimpanzee.								
<b>ISOTYPE</b>	IgG								
<b>AMOUNT</b>	0.1 ml at 0.2 mg/ml								
<b>STORAGE/SHELF LIFE</b>	2 - 8° C / 1 year from date of receipt								
<b>PHYSICAL STATE</b>	Liquid								
<b>BUFFER</b>	Tris-buffered Saline containing 0.1% BSA containing 0.09% Sodium Azide								
<b>ORIGIN</b>	USA								
<b>PRODUCTION PROCEDURES</b>	<p>Antibody was affinity purified using an epitope specific to AKAP8/AKAP95 immobilized on solid support.</p> <p>The epitope recognized by A301-062A maps to a region between residue 642 and the C-terminus (residue 692) of human A-kinase anchor protein 8 using the numbering given in entry NP_005849.1 (GeneID 10270).</p> <p>Immunoglobulin concentration was determined by extinction coefficient: absorbance at 280 nm of 1.4 equals 1.0 mg of IgG.</p>								
<b>APPLICATIONS</b>	<p>Centrifuge tube to remove product from lid. Optimal working dilutions should be determined experimentally by the investigator. Prepare working dilution immediately before use.</p> <table><tr><td>Western Blot</td><td>1:2,000 to 1:10,000</td></tr><tr><td>Immunoprecipitation</td><td>2 to 5 µg/mg lysate</td></tr><tr><td>Immunohistochemistry</td><td>1:200 to 1:1,000. Epitope retrieval with citrate buffer pH6.0 is recommended for FFPE tissue sections.</td></tr><tr><td>Immunofluorescence</td><td>1:100 to 1:1,000</td></tr></table>	Western Blot	1:2,000 to 1:10,000	Immunoprecipitation	2 to 5 µg/mg lysate	Immunohistochemistry	1:200 to 1:1,000. Epitope retrieval with citrate buffer pH6.0 is recommended for FFPE tissue sections.	Immunofluorescence	1:100 to 1:1,000
Western Blot	1:2,000 to 1:10,000								
Immunoprecipitation	2 to 5 µg/mg lysate								
Immunohistochemistry	1:200 to 1:1,000. Epitope retrieval with citrate buffer pH6.0 is recommended for FFPE tissue sections.								
Immunofluorescence	1:100 to 1:1,000								
<b>APPLICATION NOTES</b>	<p>Validation by IP/Western Blot was performed using ReliaBLOT® Western Blot Gel 4-8%, 10 x 10 cm (Cat. No. WB101-40812G) and ReliaBLOT® Reagents (Cat. No. WB120). Related products include ReliaBLOT® IP/WB kits, buffers and reagents.</p> <p>IHC validation was performed using Immunohistochemistry Accessory Kit (Cat. # IHC-101).</p>								
<b>IHC HUMAN CONTROLS</b>	Colon Carcinoma								
<b>IHC MOUSE CONTROLS</b>	Teratoma								
<b>ADDITIONAL INFO</b>	<p><a href="http://www.bethyl.com/product/A301-062A">http://www.bethyl.com/product/A301-062A</a></p> <p>Use the link above to view a current list of citations and other product specific information.</p>								

# AKAP8/AKAP95 Antibody: A301-062A



**Detection of Human AKAP8/AKAP95 by Western Blot and Immunoprecipitation.** *Samples:* Whole cell lysate from HeLa (5, 15 and 50 µg for WB; 1 mg for IP, 20% of IP loaded) and 293T (T; 50 µg) cells. *Antibodies:* Affinity purified rabbit anti-AKAP8/AKAP95 antibody A301-062A used for WB at 0.04 µg/ml (A) and 1 µg/ml (B) and used for IP at 3 µg/mg lysate. AKAP8/AKAP95 was also immunoprecipitated by rabbit anti-AKAP8/AKAP95 antibody A301-061A, which recognizes an upstream epitope. *Detection:* Chemiluminescence with exposure times of 3 seconds (A and B).

**Detection of Human and Mouse AKAP8/AKAP95 by Immunohistochemistry.** *Sample:* FFPE section of human breast carcinoma (left) and mouse teratoma (right). *Antibody:* Affinity purified rabbit anti-AKAP8/AKAP95 (Cat. No. A301-062A) used at a dilution of 1:1,000 (0.2µg/ml) and 1:200 (1µg/ml) . *Detection:* DAB staining using Immunohistochemistry Accessory Kit (Cat. No. IHC-101).

## MATERIAL SAFETY DATA SHEET

### CONTENTS

This product contains Rabbit immunoglobulin G (IgG) protein in Tris-buffered Saline containing 0.1% BSA containing 0.09% Sodium Azide.

### INGREDIENT DESCRIPTIONS    **NON-HAZARDOUS:**

Bovine Serum Albumin (BSA) – This product was derived from animals free of infectious or contagious diseases of U.S. Origin. No known toxicity for this biological material.

#### **HAZARDOUS:**

Sodium Azide (NaN<sub>3</sub>): Azide forms explosive chemical compounds with lead and copper plumbing. Care must be taken to wash waste down drains with large volumes of water. LD<sub>50</sub> oral mouse 27 mg/kg. Wash all affected areas with large volumes of water and if swallowed consult your physician immediately.