

Nanog Antibody AbVantage™ Pack

Produced in Rabbit

Antigen Affinity Purified

Catalog No. A310-110A

Protein ID Q80Z64

Gene ID 71950



CONTENTS	Rabbit anti-Nanog	A300-397A
	Rabbit anti-Nanog	A300-398A
APPLICATIONS	WB, IP	
REACTIVITY	Mouse	
STORAGE / SHELF LIFE	2 - 8° C / 1 year from date of receipt	

PHYSICAL STATE Liquid

ORIGIN USA

NOTE Centrifuge tube to remove product from lid. Optimal working dilutions should be determined experimentally by the investigator. Prepare working dilution immediately before use.

Nanog Antibody

Rabbit Polyclonal

Antigen Affinity Purified

Catalog No. A300-397A

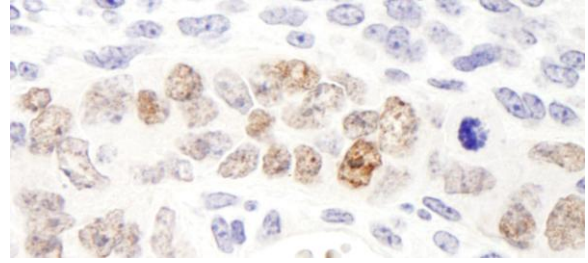
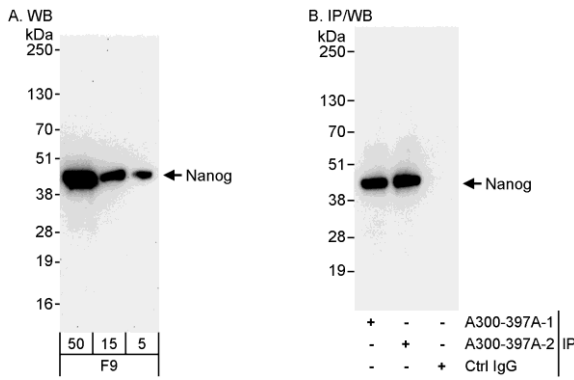
Protein ID Q80Z64

Gene ID 71950



APPLICATIONS	WB, IP, IHC-P, IF								
REACTIVITY TESTED	Mouse								
PRESUMED REACTIVITY	Based on 100% sequence identity, this antibody is predicted to react with Japanese house mouse.								
ISOTYPE	IgG								
AMOUNT	0.1 ml at 1 mg/ml								
STORAGE/SHELF LIFE	2 - 8° C / 1 year from date of receipt								
PHYSICAL STATE	Liquid								
BUFFER	Tris-citrate/phosphate buffer, pH 7 to 8 containing 0.09% Sodium Azide								
ORIGIN	USA								
PRODUCTION PROCEDURES	<p>Antibody was affinity purified using an epitope specific to Nanog immobilized on solid support.</p> <p>The epitope recognized by A300-397A maps to a region between residues 1 and 50 of mouse Nanog homeobox using the numbering given in TrEMBL entry Q80Z64 (GeneID 71950).</p> <p>Immunoglobulin concentration was determined by extinction coefficient: absorbance at 280 nm of 1.4 equals 1.0 mg of IgG.</p>								
APPLICATIONS	<p>Centrifuge tube to remove product from lid. Optimal working dilutions should be determined experimentally by the investigator. Prepare working dilution immediately before use.</p> <table><tr><td>Western Blot</td><td>1:5,000 - 1:15,000</td></tr><tr><td>Immunoprecipitation</td><td>2 to 5 µg/mg lysate</td></tr><tr><td>Immunohistochemistry</td><td>1:500 to 1:2,000. Epitope retrieval with Tris-EDTA pH9.0 is recommended for FFPE tissue sections.</td></tr><tr><td>Immunofluorescence</td><td>1:250 to 1:1,000.</td></tr></table>	Western Blot	1:5,000 - 1:15,000	Immunoprecipitation	2 to 5 µg/mg lysate	Immunohistochemistry	1:500 to 1:2,000. Epitope retrieval with Tris-EDTA pH9.0 is recommended for FFPE tissue sections.	Immunofluorescence	1:250 to 1:1,000.
Western Blot	1:5,000 - 1:15,000								
Immunoprecipitation	2 to 5 µg/mg lysate								
Immunohistochemistry	1:500 to 1:2,000. Epitope retrieval with Tris-EDTA pH9.0 is recommended for FFPE tissue sections.								
Immunofluorescence	1:250 to 1:1,000.								
APPLICATION NOTES	<p>Validation by IP/Western Blot was performed using ReliaBLOT® Western Blot Gel 4-20%, 10 x 10 cm (Cat. No. WB101-42012G) and ReliaBLOT® Reagents (Cat. No. WB120). Related products include ReliaBLOT® IP/WB kits, buffers and reagents.</p> <p>IHC validation was performed using Immunohistochemistry Accessory Kit (Cat. # IHC-101). Epitope Retrieval Buffer- High pH Concentrate (Cat. # IHC-101J) was substituted for Epitope Retrieval Buffer - Reduced pH Concentrate.</p>								
IHC MOUSE CONTROLS	Teratoma								
ADDITIONAL INFO	<p>http://www.bethyl.com/product/A300-397A</p> <p>Use the link above to view a current list of citations and other product specific information.</p>								

Nanog Antibody: A300-397A



Detection of Mouse Nanog by Western Blot and Immunoprecipitation. *Samples:* Whole cell lysate (5, 15 and 50 µg for WB; 1 mg for IP, 20% of IP loaded) from mouse F9 cells. *Antibodies:* Affinity purified rabbit anti-Nanog antibody A300-397A (lot A300-397A-2) used for WB at 0.1 µg/ml (A) and 1 µg/ml (B) and used for IP at 3 µg/mg lysate. Nanog was also immunoprecipitated by a previous lot (lot A300-397A-1) of this antibody. *Detection:* Chemiluminescence with exposure times of 30 seconds (A) and 3 seconds (B).

Detection of Mouse Nanog by Immunohistochemistry. *Sample:* FFPE section of mouse teratoma. *Antibody:* Affinity purified rabbit anti-Nanog (Cat. No. A300-397A Lot2) used at a dilution of 1:500 (2µg/ml). *Detection:* DAB

MATERIAL SAFETY DATA SHEET

CONTENTS

This product contains Rabbit immunoglobulin G (IgG) protein in Tris-citrate/phosphate buffer, pH 7 to 8 containing 0.09% Sodium Azide.

INGREDIENT DESCRIPTIONS

HAZARDOUS:

Sodium Azide (NaN₃): Azide forms explosive chemical compounds with lead and copper plumbing. Care must be taken to wash waste down drains with large volumes of water. LD50 oral mouse 27 mg/kg. Wash all affected areas with large volumes of water and if swallowed consult your physician immediately.

Nanog Antibody

Rabbit Polyclonal

Antigen Affinity Purified

Catalog No. A300-398A

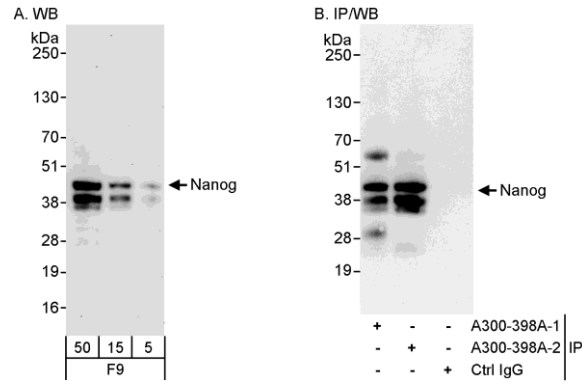
Protein ID Q80Z64

Gene ID 71950



APPLICATIONS	WB, IP				
REACTIVITY TESTED	Mouse				
PRESUMED REACTIVITY	Based on 100% sequence identity, this antibody is predicted to react with Southeastern Asian house mouse, Western Mediterranean mouse and Japanese house mouse.				
ISOTYPE	IgG				
AMOUNT	0.1 ml at 1 mg/ml				
STORAGE/SHELF LIFE	2 - 8° C / 1 year from date of receipt				
PHYSICAL STATE	Liquid				
BUFFER	Tris-citrate/phosphate buffer, pH 7 to 8 containing 0.09% Sodium Azide				
ORIGIN	USA				
PRODUCTION PROCEDURES	<p>Antibody was affinity purified using an epitope specific to Nanog immobilized on solid support.</p> <p>The epitope recognized by A300-398A maps to a region between residue 250 and the C-terminus (residue 305) of mouse Nanog homeobox using the numbering given in TrEMBL entry Q80Z64 (GeneID 71950).</p> <p>Immunoglobulin concentration was determined by extinction coefficient: absorbance at 280 nm of 1.4 equals 1.0 mg of IgG.</p>				
APPLICATIONS	<p>Centrifuge tube to remove product from lid. Optimal working dilutions should be determined experimentally by the investigator. Prepare working dilution immediately before use.</p> <table><tr><td>Western Blot</td><td>1:1,000 - 1:10,000</td></tr><tr><td>Immunoprecipitation</td><td>2 to 5 µg/mg lysate</td></tr></table>	Western Blot	1:1,000 - 1:10,000	Immunoprecipitation	2 to 5 µg/mg lysate
Western Blot	1:1,000 - 1:10,000				
Immunoprecipitation	2 to 5 µg/mg lysate				
APPLICATION NOTES	Validation by IP/Western Blot was performed using ReliaBLOT® Western Blot Gel 4-20%, 10 x 10 cm (Cat. No. WB101-42012G) and ReliaBLOT® Reagents (Cat. No. WB120). Related products include ReliaBLOT® IP/WB kits, buffers and reagents.				
ADDITIONAL INFO	<p>http://www.bethyl.com/product/A300-398A</p> <p>Use the link above to view a current list of citations and other product specific information.</p>				

Nanog Antibody: A300-398A



Detection of Mouse Nanog by Western Blot and Immunoprecipitation. *Samples:* Whole cell lysate (5, 15 and 50 µg for WB; 1 mg for IP, 20% of IP loaded) from mouse F9 cells. *Antibodies:* Affinity purified rabbit anti-Nanog antibody A300-398A (lot A300-398A-2) used for WB at 0.1 µg/ml (A) and 1 µg/ml (B) and used for IP at 3 µg/mg lysate. Nanog was also immunoprecipitated by a previous lot (lot A300-398A-1) of this antibody. *Detection:* Chemiluminescence with exposure times of 30 seconds (A) and 10 seconds (B).

MATERIAL SAFETY DATA SHEET

CONTENTS

This product contains Rabbit immunoglobulin G (IgG) protein in Tris-citrate/phosphate buffer, pH 7 to 8 containing 0.09% Sodium Azide.

INGREDIENT DESCRIPTIONS

HAZARDOUS:

Sodium Azide (NaN₃): Azide forms explosive chemical compounds with lead and copper plumbing. Care must be taken to wash waste down drains with large volumes of water. LD50 oral mouse 27 mg/kg. Wash all affected areas with large volumes of water and if swallowed consult your physician immediately.