

HdmX/MDM4 Antibody AbVantage™ Pack

Produced in Rabbit

Antigen Affinity Purified

Catalog No. A310-107A

Protein ID NP_002384.2

Gene ID 4194



CONTENTS Rabbit anti-HdmX/MDM4 A300-287A
Rabbit anti-Phospho HdmX/MDM4 (S403) A300-392A

APPLICATIONS WB, IP, PLA, IHC-P, IF

REACTIVITY Human

STORAGE / SHELF LIFE 2 - 8° C / 1 year from date of receipt

PHYSICAL STATE Liquid

ORIGIN USA

NOTE Centrifuge tube to remove product from lid. Optimal working dilutions should be determined experimentally by the investigator. Prepare working dilution immediately before use.

HdmX/MDM4 Antibody

Rabbit Polyclonal

Antigen Affinity Purified

Catalog No. A300-287A

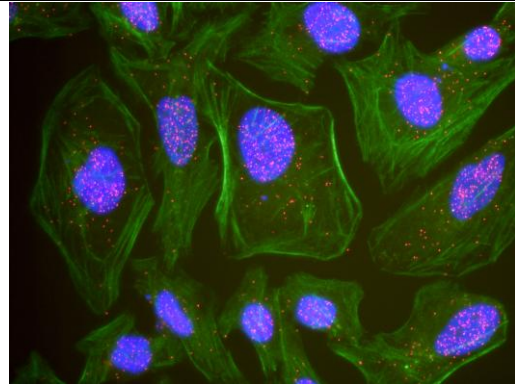
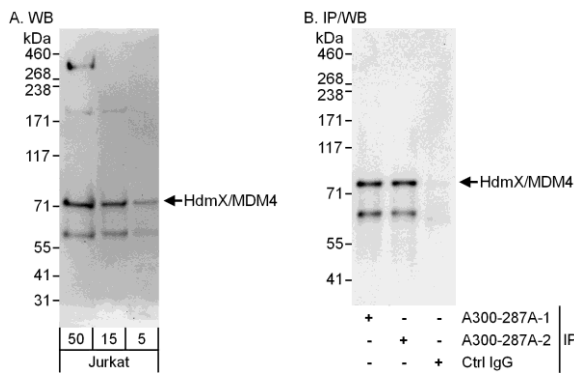
Protein ID NP_002384.2

Gene ID 4194



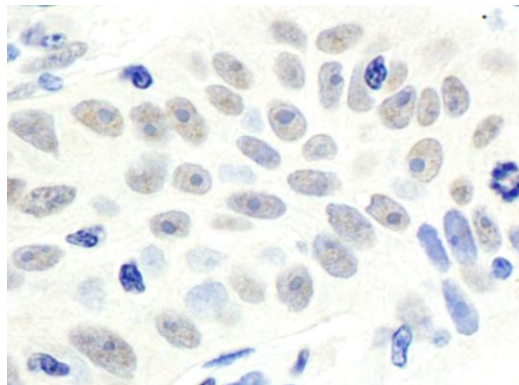
APPLICATIONS	WB, IP, IHC-P, IF, PLA										
REACTIVITY TESTED	Human										
PRESUMED REACTIVITY	Based on 100% sequence identity, this antibody is predicted to react with Orangutan, Rhesus Monkey, Gorilla, Crab-eating macaque and Northern white-cheeked gibbon.										
ISOTYPE	IgG										
AMOUNT	0.1 ml at 1 mg/ml										
STORAGE/SHELF LIFE	2 - 8° C / 1 year from date of receipt										
PHYSICAL STATE	Liquid										
BUFFER	Tris-citrate/phosphate buffer, pH 7 to 8 containing 0.09% Sodium Azide										
ORIGIN	USA										
PRODUCTION PROCEDURES	<p>Antibody was affinity purified using an epitope specific to HdmX/MDM4 immobilized on solid support.</p> <p>The epitope recognized by A300-287A maps to a region between residues 125 and 175 of human ortholog of mouse double minute 4 using the numbering given in entry NP_002384.2 (GeneID 4194).</p> <p>Immunoglobulin concentration was determined by extinction coefficient: absorbance at 280 nm of 1.4 equals 1.0 mg of IgG.</p>										
APPLICATIONS	<p>Centrifuge tube to remove product from lid. Optimal working dilutions should be determined experimentally by the investigator. Prepare working dilution immediately before use.</p> <table><tr><td>Western Blot</td><td>1:1,000 - 1:5,000</td></tr><tr><td>Immunoprecipitation</td><td>2 to 5 µg/mg lysate</td></tr><tr><td>Immunohistochemistry</td><td>1:500 to 1:2,000. Epitope retrieval with citrate buffer pH6.0 is recommended for FFPE tissue sections.</td></tr><tr><td>Immunofluorescence</td><td>1:250 to 1:1,000.</td></tr><tr><td>Proximity Ligation Assay</td><td>1:1,000 - 1:10,000</td></tr></table>	Western Blot	1:1,000 - 1:5,000	Immunoprecipitation	2 to 5 µg/mg lysate	Immunohistochemistry	1:500 to 1:2,000. Epitope retrieval with citrate buffer pH6.0 is recommended for FFPE tissue sections.	Immunofluorescence	1:250 to 1:1,000.	Proximity Ligation Assay	1:1,000 - 1:10,000
Western Blot	1:1,000 - 1:5,000										
Immunoprecipitation	2 to 5 µg/mg lysate										
Immunohistochemistry	1:500 to 1:2,000. Epitope retrieval with citrate buffer pH6.0 is recommended for FFPE tissue sections.										
Immunofluorescence	1:250 to 1:1,000.										
Proximity Ligation Assay	1:1,000 - 1:10,000										
APPLICATION NOTES	<p>Validation by IP/Western Blot was performed using ReliaBLOT® Western Blot Gel 4-8%, 10 x 10 cm (Cat. No. WB101-40812G) and ReliaBLOT® Reagents (Cat. No. WB120). Related products include ReliaBLOT® IP/WB kits, buffers and reagents.</p> <p>IHC validation was performed using Immunohistochemistry Accessory Kit (Cat. # IHC-101).</p> <p>PLA validation was performed using Duolink In Situ kits, buffers and reagents (Cat # OLK-*).</p>										
IHC HUMAN CONTROLS	Breast Carcinoma, Lung Adenocarcinoma										
ADDITIONAL INFO	<p>http://www.bethyl.com/product/A300-287A</p> <p>Use the link above to view a current list of citations and other product specific information.</p>										

HdmX/MDM4 Antibody: A300-287A



Detection of Human HdmX/MDM4 by Western Blot and Immunoprecipitation. *Samples:* Whole cell lysate (5, 15 and 50 μ g for WB; 1 mg for IP, 20% of IP loaded) from Jurkat cells. *Antibodies:* Affinity purified rabbit anti-HdmX/MDM4 antibody A300-287A (lot A300-287A-2) used for WB at 1 μ g/ml (A and B) and used for IP at 6 μ g/mg lysate. HdmX/MDM4 was also immunoprecipitated by a previous lot (lot A300-287A-1) of this antibody. *Detection:* Chemiluminescence with exposure times of 30 seconds (A) and 10 seconds (B).

This antibody is qualified for the Proximity Ligation Assay (PLA). PLA uses paired antibodies, so please refer to the PLA page of our website for specific imaging obtained by pairing this antibody with other qualified antibodies. The above image shows representative results for PLA using three color fluorescence, including DAPI stained nuclei (blue), phalloidin stained cytoplasmic F-actin (green), and PLA positive signal (red).



Detection of Human HdmX/MDM4 by Immunohistochemistry. *Sample:* FFPE section of human lung carcinoma. *Antibody:* Affinity purified rabbit anti-HdmX/MDM4 (Cat. No. A300-287A Lot2) used at a dilution of 1:1,000 (1 μ g/ml). *Detection:* DAB

MATERIAL SAFETY DATA SHEET

CONTENTS

This product contains Rabbit immunoglobulin G (IgG) protein in Tris-citrate/phosphate buffer, pH 7 to 8 containing 0.09% Sodium Azide.

INGREDIENT DESCRIPTIONS

HAZARDOUS:

Sodium Azide (NaN₃): Azide forms explosive chemical compounds with lead and copper plumbing. Care must be taken to wash waste down drains with large volumes of water. LD50 oral mouse 27 mg/kg. Wash all affected areas with large volumes of water and if swallowed consult your physician immediately.

Phospho HdmX/MDM4 (S403) Antibody

Rabbit Polyclonal

Antigen Affinity Purified

Catalog No. A300-392A

Protein ID NP_002384.2

Gene ID 4194



APPLICATIONS WB, PLA

REACTIVITY TESTED Human

PRESUMED REACTIVITY Based on 100% sequence identity, this antibody is predicted to react with Bovine, Dog, Horse, Rabbit, Guinea pig_10141, Pig, Panda, Orangutan, Gorilla, Chimpanzee, White-tufted-ear marmoset, Chinese hamster, Thirteen-lined ground squirrel and Northern white-cheeked gibbon.

ISOTYPE IgG

AMOUNT 0.1 ml at 1 mg/ml

STORAGE/SHELF LIFE 2 - 8° C / 1 year from date of receipt

PHYSICAL STATE Liquid

BUFFER Tris-citrate/phosphate buffer, pH 7 to 8 containing 0.09% Sodium Azide

ORIGIN USA

PRODUCTION PROCEDURES Antibody was affinity purified using an epitope specific to HdmX/MDM4 phosphorylated at Ser 403 immobilized on solid support.

The epitope recognized by A300-392A maps to a region surrounding phosphorylated Ser 403 of human ortholog of mouse double minute 4 using the numbering given in entry NP_002384.2 (GeneID 4194).

Immunoglobulin concentration was determined by extinction coefficient: absorbance at 280 nm of 1.4 equals 1.0 mg of IgG.

APPLICATIONS Centrifuge tube to remove product from lid. Optimal working dilutions should be determined experimentally by the investigator. Prepare working dilution immediately before use.

Western Blot 1:1,000 - 1:3,000. Detection of endogenous phospho HdmX/MDM4 will likely require immunoprecipitation of HdmX/MDM4 prior to blotting with A300-392A. Affinity purified rabbit anti-HdmX/MDM4 antibody A300-287A is recommended for IP.

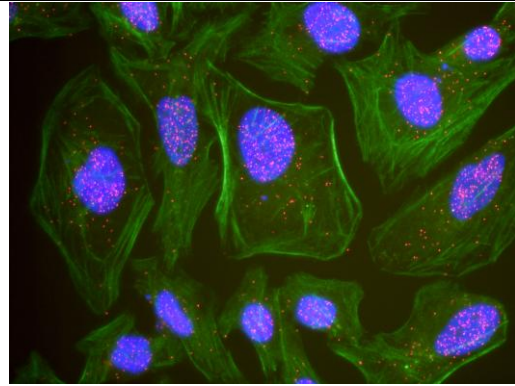
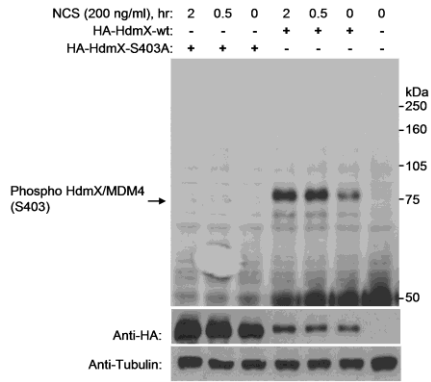
Proximity Ligation Assay 1:1,000 - 1:20,000

APPLICATION NOTES PLA validation was performed using Duolink In Situ kits, buffers and reagents (Cat # OLK-*).

ADDITIONAL INFO <http://www.bethyl.com/product/A300-392A>

Use the link above to view a current list of citations and other product specific information.

Phospho HdmX/MDM4 (S403) Antibody: A300-392A



Detection of phospho HdmX/MDM4 (Ser 403) by Western Blot. *Samples:* Whole cell lysate (30 μ g/lane) from 293T cells that were mock transfected, or transfected with expression constructs for HA tagged wild-type HdmX/MDM4 or HA tagged HdmX/MDM4 (S403A) mutant. *Antibody:* Affinity purified rabbit anti-phospho HdmX/MDM4 antibody (Cat. No. A300-392A) used at 0.13 μ g/ml for WB. *Detection:* Chemiluminescence with an exposure time of 30 seconds.

This antibody is qualified for the Proximity Ligation Assay (PLA). PLA uses paired antibodies, so please refer to the PLA page of our website for specific imaging obtained by pairing this antibody with other qualified antibodies. The above image shows representative results for PLA using three color fluorescence, including DAPI stained nuclei (blue), phalloidin stained cytoplasmic F-actin (green), and PLA positive signal (red).

MATERIAL SAFETY DATA SHEET

CONTENTS

This product contains Rabbit immunoglobulin G (IgG) protein in Tris-citrate/phosphate buffer, pH 7 to 8 containing 0.09% Sodium Azide.

INGREDIENT DESCRIPTIONS

HAZARDOUS:

Sodium Azide (NaN₃): Azide forms explosive chemical compounds with lead and copper plumbing. Care must be taken to wash waste down drains with large volumes of water. LD50 oral mouse 27 mg/kg. Wash all affected areas with large volumes of water and if swallowed consult your physician immediately.